

**POTOMAC HIGH SCHOOL
FULL JUDGES PANEL – PERCUSSION**

LOCATION: Potomac High School

ADDRESS: 3401 Panther Pride Drive, Dumfries, VA 22026

POC/EMAIL/PHONE: Ryan Gillis/gillisrc@pwcs.edu/804-691-4681

TRAVEL OUTSIDE DURING MIGRATION: Yes for percussion units in Warm Up A

GYM AREA: 78' X 108'

GYM PERFORMANCE AREA: 78' X 106'

GYM ENTRY DOOR WIDTH: Approx 5'6" center bar removed

GYM EXIT DOOR WIDTH: Approx 5'6" center bar removed

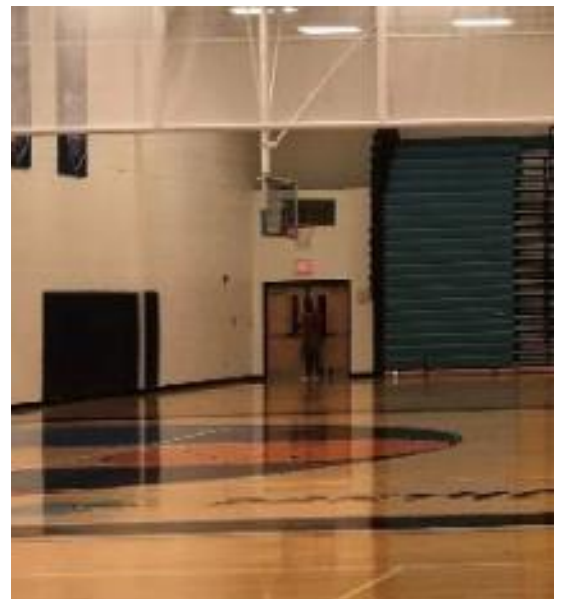
EQUIPMENT PROP STAGING AND/OR STOWING: Hallways throughout the school.



Percussion Timing Line: Vertical

**Views of the gym from the
spectator side**

Percussion Exit →





PERCUSSION
 ← **PERFORMER ENTRANCE
 TO GYM**

**FLOOR AND PROP
 ENTRANCE →**



PERCUSSION WARM UP A: Band Room
SEPARATE ENTRANCE AND EXIT: Yes
WARM UP MEASUREMENTS: 30' X 50'
**OBSTRUCTIONS: Yes – instrument racks around
 perimeter of room but should not be in the way**
DISTANCE TO PERFORMANCE AREA: Approx. 200'



PERCUSSION
 ← **ENTRANCE TO WARM UP A
 FROM OUTSIDE.**

**EXIT FROM WARM UP A →
 TO INSIDE THE SCHOOL**



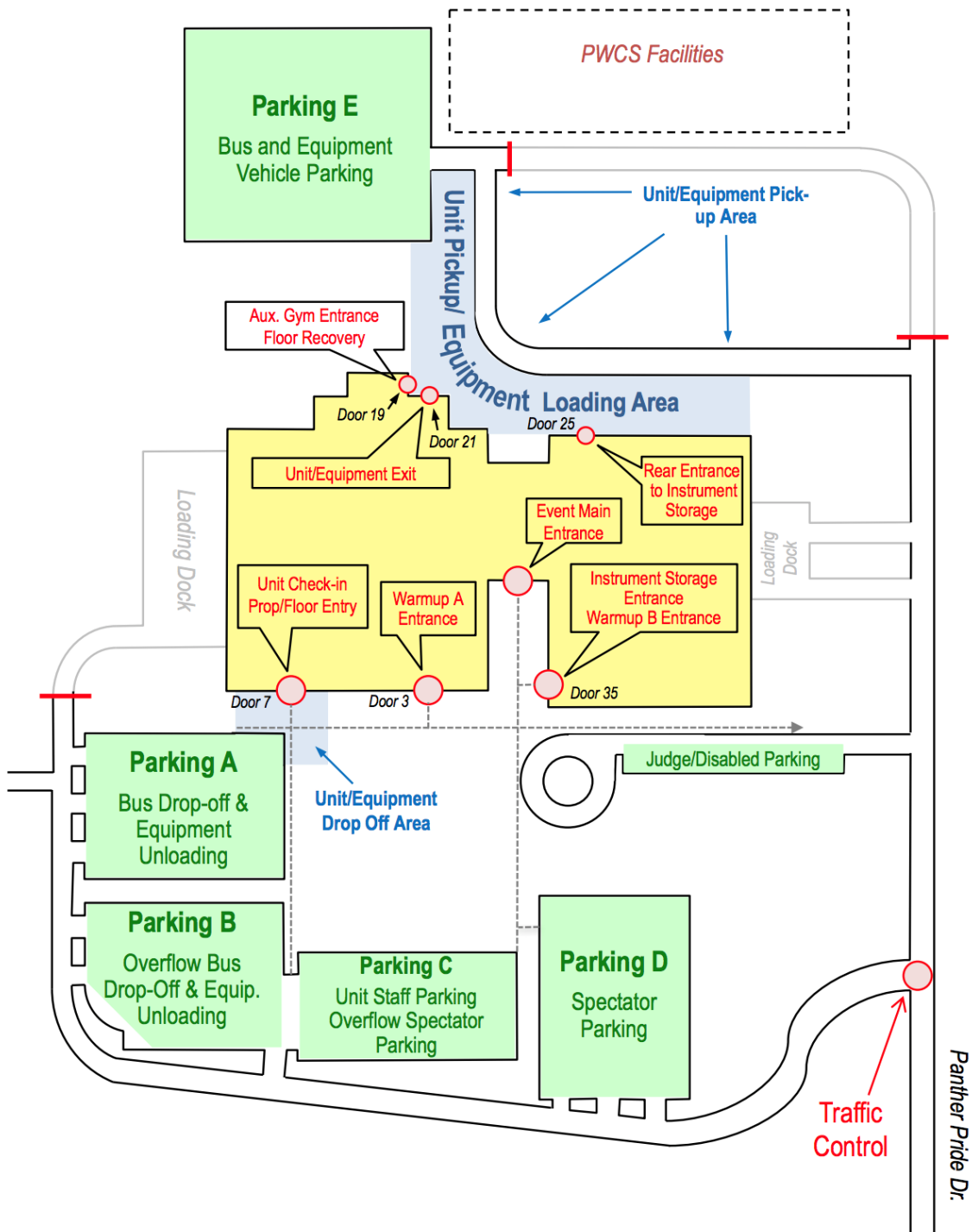
PERCUSSION WARM UP B: Stage
SEPARATE ENTRANCE AND EXIT: No
WARM UP MEASUREMENTS: 30' X 60'
OBSTRUCTIONS: Yes – curtains when entering/exiting the stage. Can be maneuvered around easily.
DISTANCE TO EQUIPMENT WARM UP: Approx. 200'



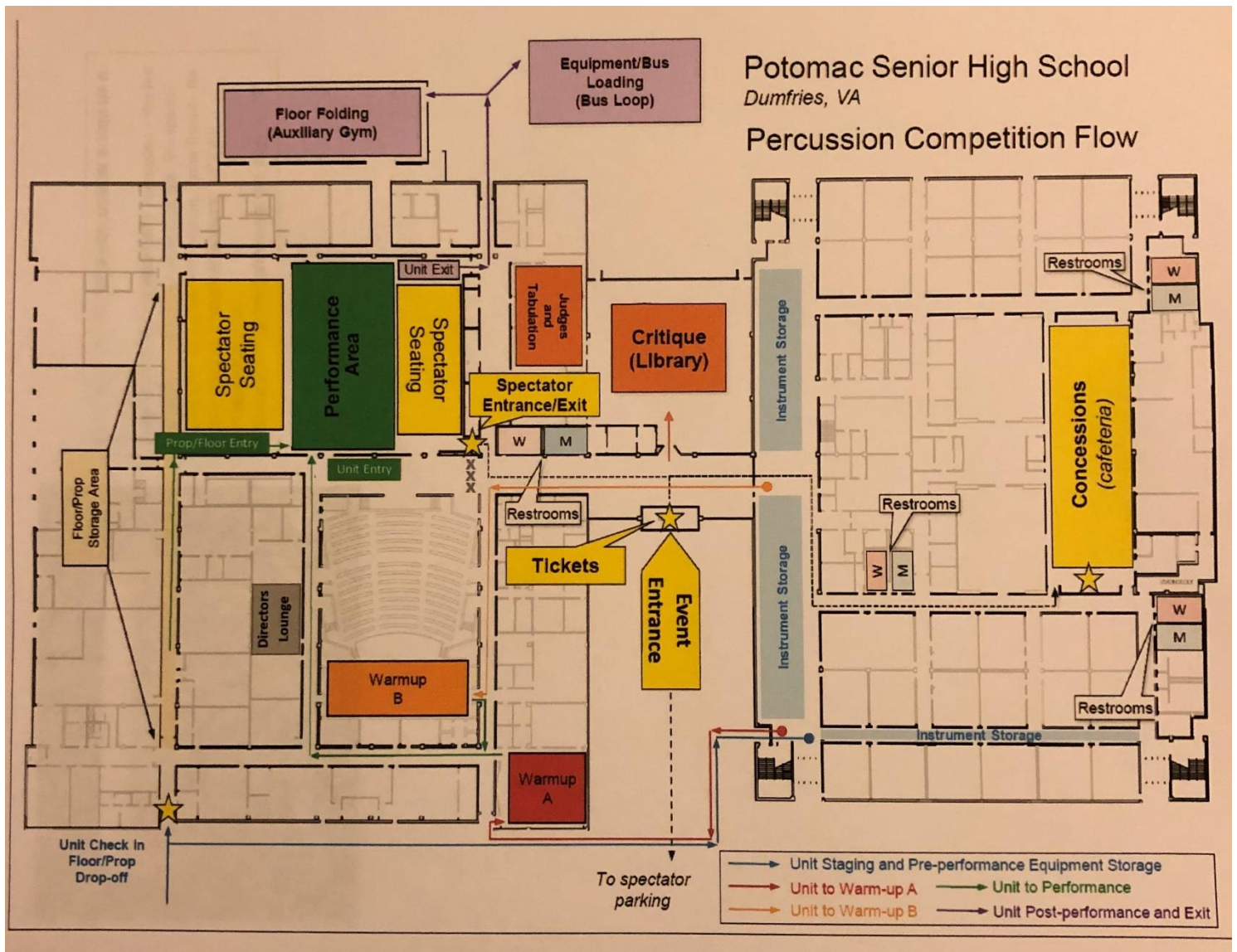
PERCUSSION
ENTER/EXIT TO WARM UP B



Parking and Equipment Control Map



PERCUSSION FLOW



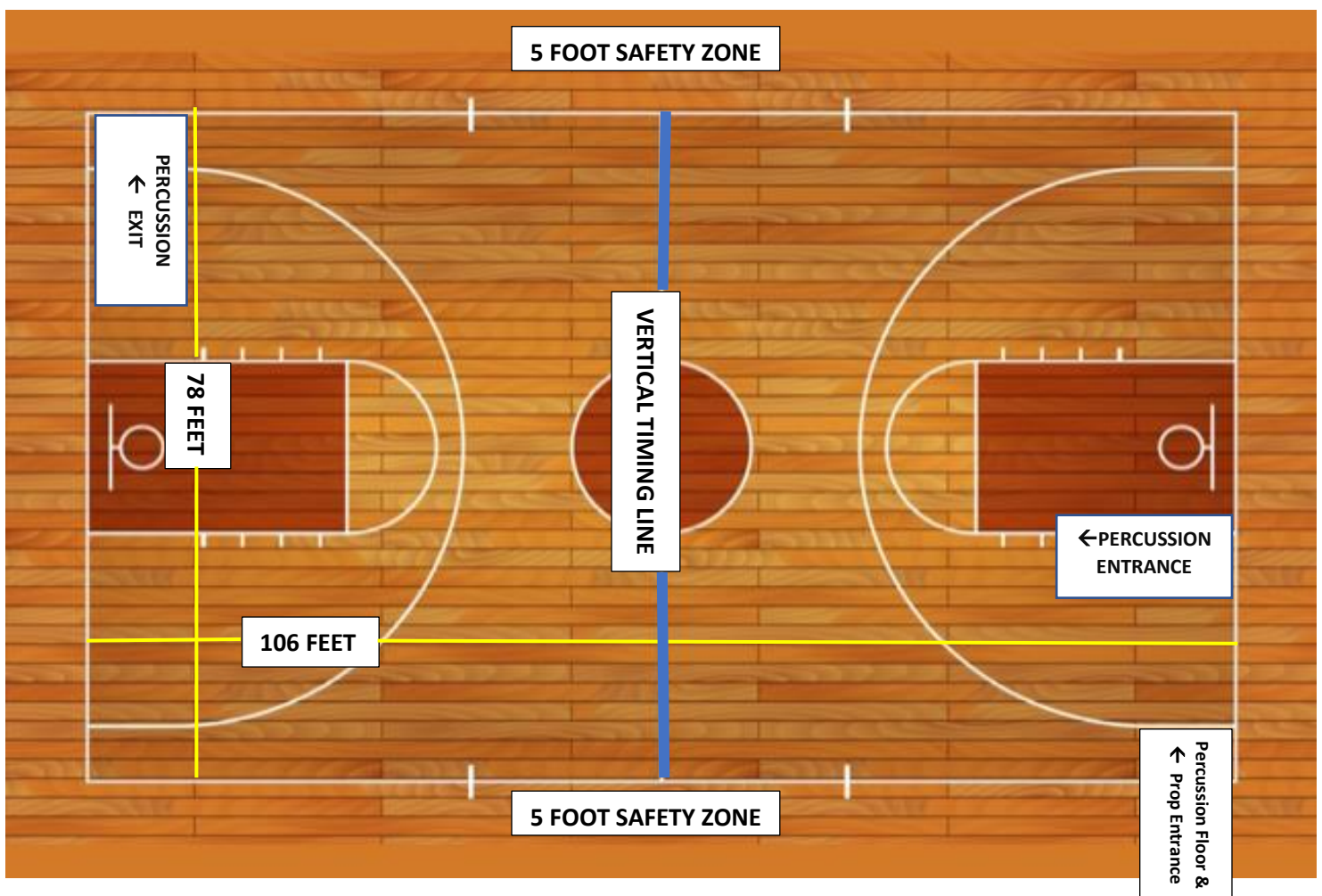


Potomac High School PERCUSSION Competition Area

All AIA contest sites must have a minimum of 70' x 100' of gym area to accommodate a five (5) foot "safety zone" from spectator seating. If no spectators are seated on the left or right sides of the gym area, then the "safety zone" will be eliminated on the left and right sides of the competition area and can extend to the maximum of 78' x 106'.

The "competition area" at this event measures approximately 78' x 106'. All performing groups must be prepared to perform within that area. Floor tarps may not extend into the "safety zones" per rules found in the Winterguard International Adjudication Manual and Rulebook.

SPECTATOR SEATING



BACKSIDE SEATING