



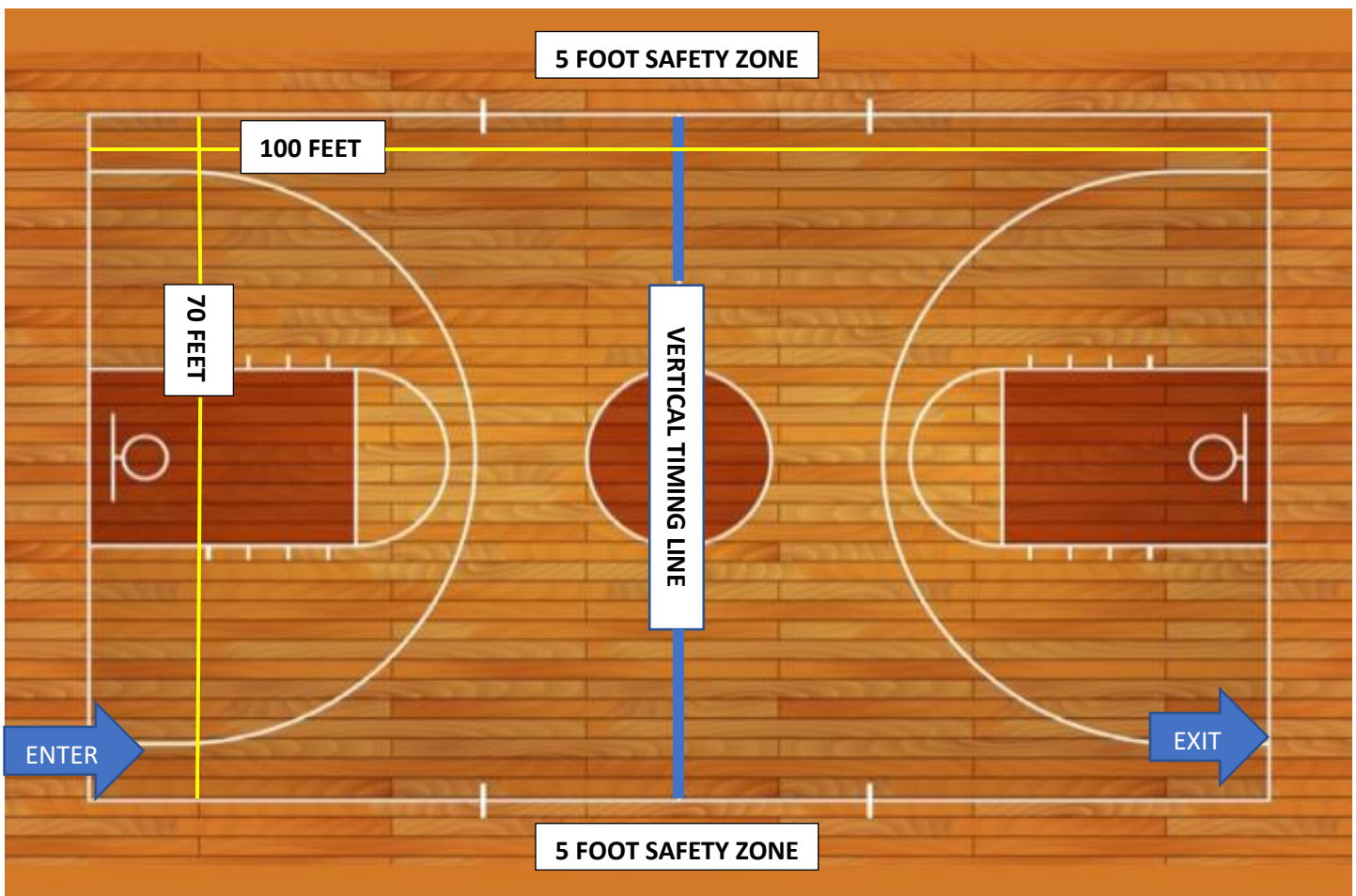
Atlantic Indoor Association

**Jefferson Forest High School
Competition Area - Colorguard**

All AIA contest sites must have a minimum of 70' x 100' of gym area to accommodate a five (5) foot "safety zone" from spectator seating. If no spectators are seated on the left or right sides of the gym area, then the "safety zone" will be eliminated on the left and right sides of the competition area and can extend to the maximum of 106' x 78'.

The "competition area" at this event measures approximately 70' x 100'. All performing groups must be prepared to perform within that area. Floor tarps may not extend into the "safety zones" per rules found in the Winterguard International Adjudication Manual and Rulebook.

BACKSIDE SEATING



SPECTATOR SEATING

CG – there is plenty of room around the EQM warmup area to stow your Eqm, floor, and props. You will need to unload them at a door near the loading dock by unit check in. You will gather your items on your way to perform.

