

**POWHATAN HIGH SCHOOL
PERCUSSION/WINDS FULL PANEL**

LOCATION: Powhatan High School

ADDRESS: 1800 Judes Ferry Road, Powhatan, VA 23139

POC/EMAIL/PHONE: Neil Landini 804-986-4421 neil.landini@powhatan.k12.va.us

TRAVEL OUTSIDE DURING MIGRATION: No

GYM PERFORMANCE AREA: approx. 70' X 90'

GYM ENTRY DOOR WIDTH: approx. 6'5"

GYM EXIT DOOR WIDTH: approx. 6'5"

EQUIPMENT PROP STAGING AND/OR STOWING: Main hallway near concessions or hallway leading to equipment warm up

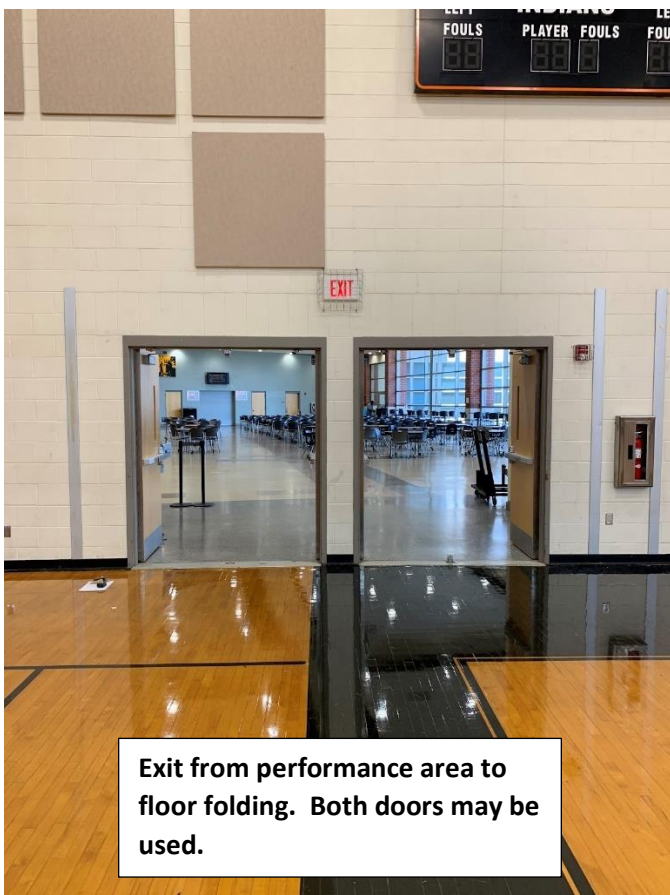


APPROXIMATE CEILING HEIGHT: 30'

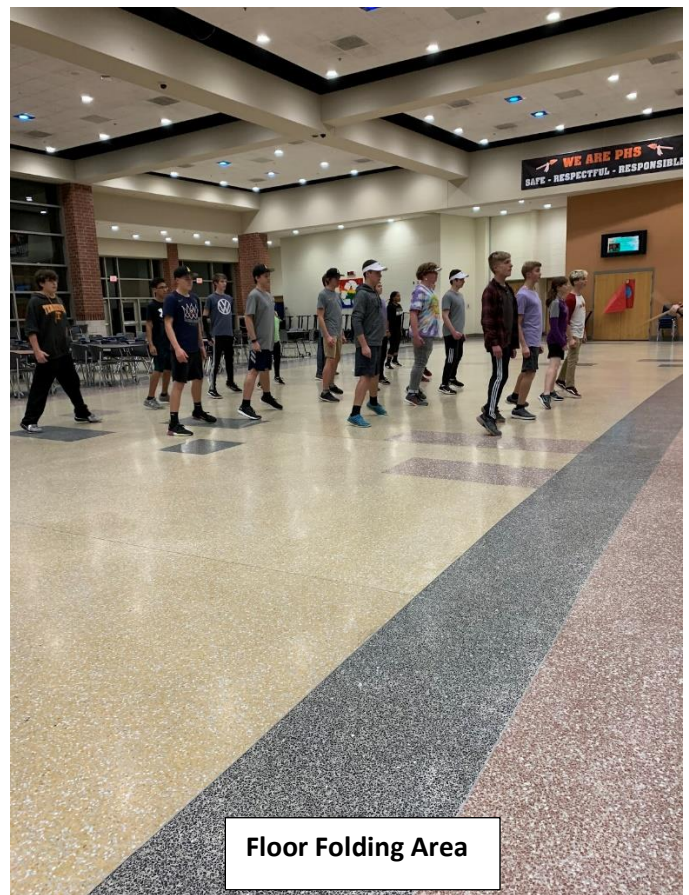
TIMING LINE: Vertical

Performance area entrance from Equipment Warmup. Doors are double wide with center bar removed.

This area will become congested. To take the proper precautions to social distance; the unit that is On Deck to perform will be permitted to wait in the main gym just beyond the doors shown.



Exit from performance area to floor folding. Both doors may be used.



Floor Folding Area



WARM UP "A": Stage

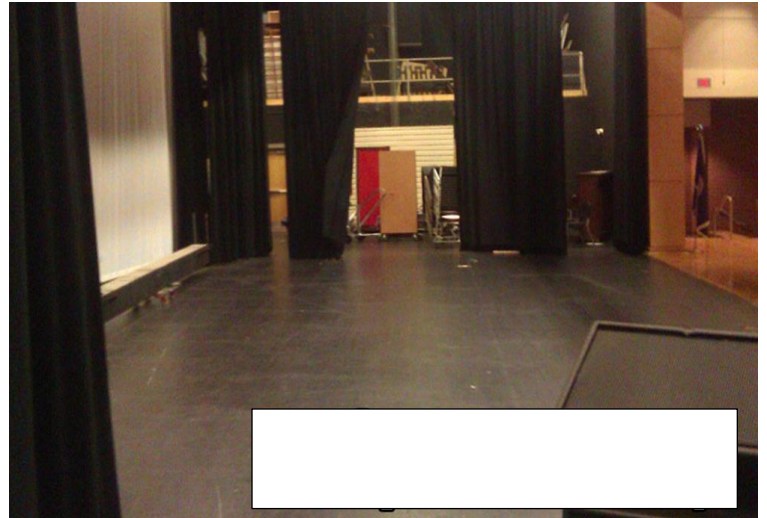
SEPARATE ENTRANCE AND EXIT: No

EQUIPMENT WARM UP MEASUREMENTS: 42' X 50'

CEILING HEIGHT: Approx 12'

OBSTRUCTIONS: Stage curtains and potential theatrical items

DISTANCE TO PERFORMANCE AREA: Approx 1,000'



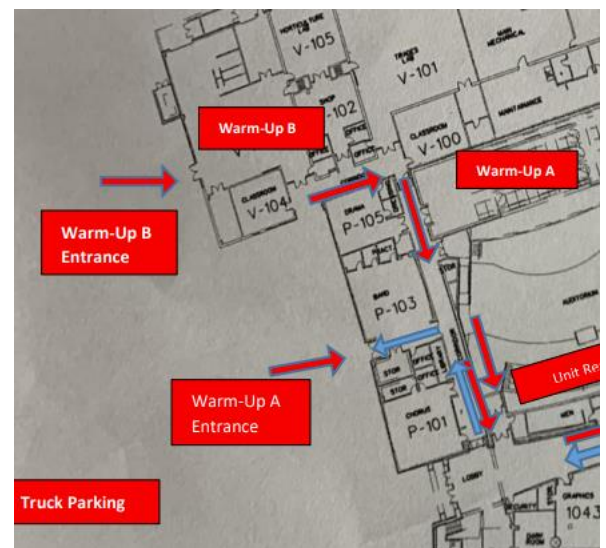
WARM UP "B": Room Just above V-104

SEPARATE ENTRANCE AND EXIT: Yes – the entrance is from the back parking lot

DISTANCE TO PERFORMANCE AREA: Approx 2,000'

SOUND CARRY TO PERFORMANCE AREA: No

NO IMAGE OF THE ACTUAL ROOM IS AVAILABLE.

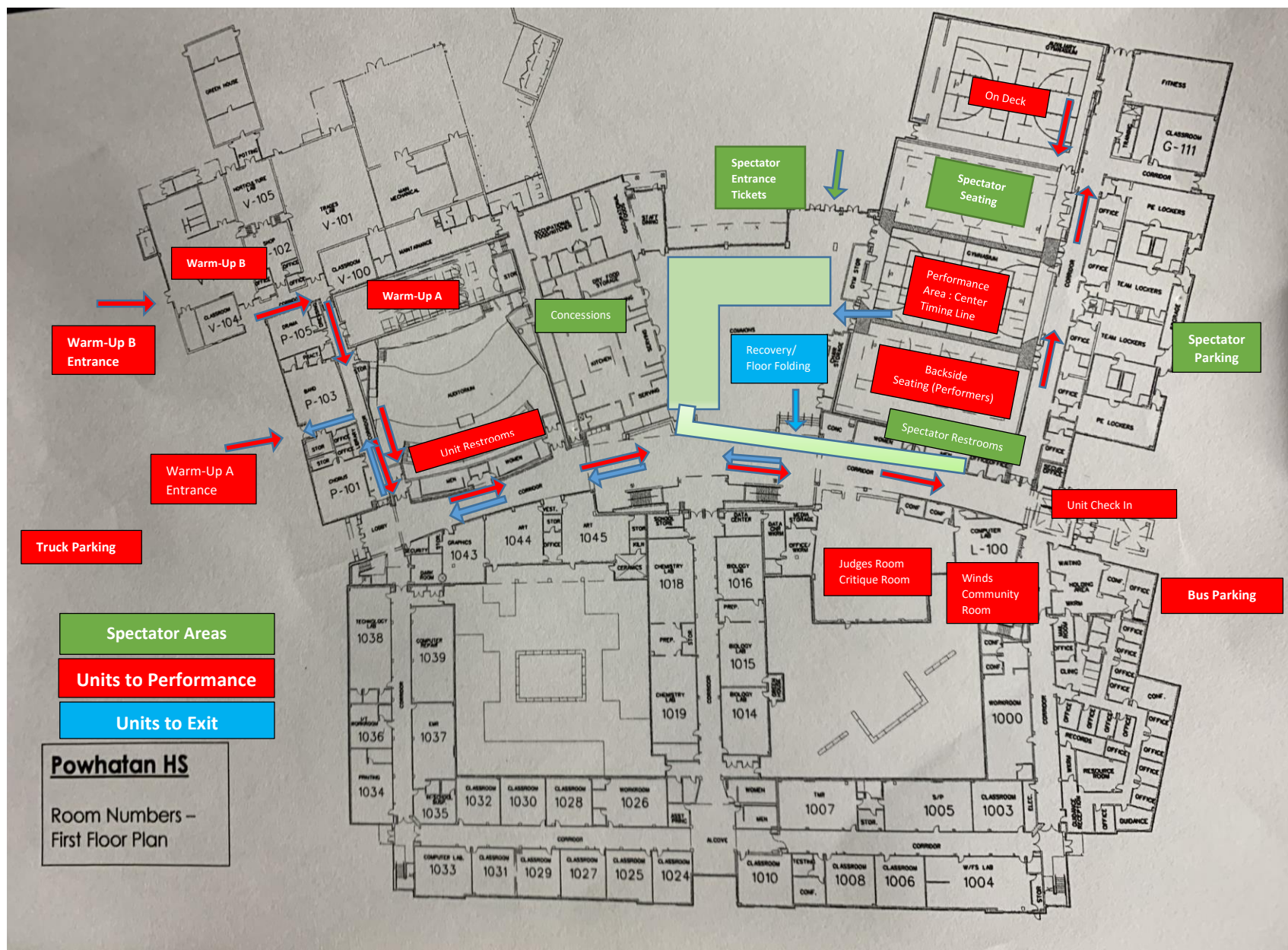


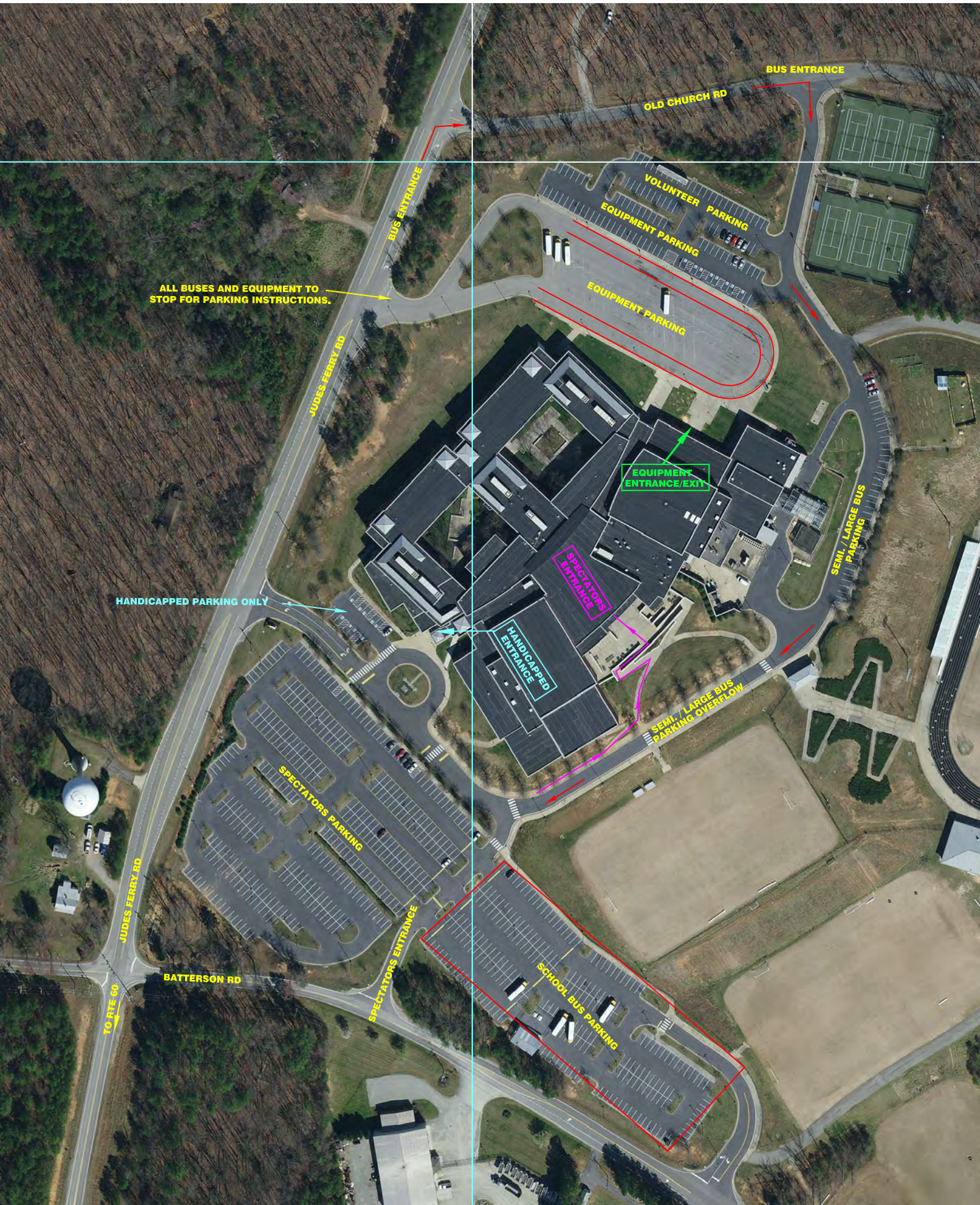
Main corridor leading to performance area from warmup "A" and "B".



Percussion/Winds pass through aux gym to performance area.

2022 WGI Richmond Percussion and Winds Building Map

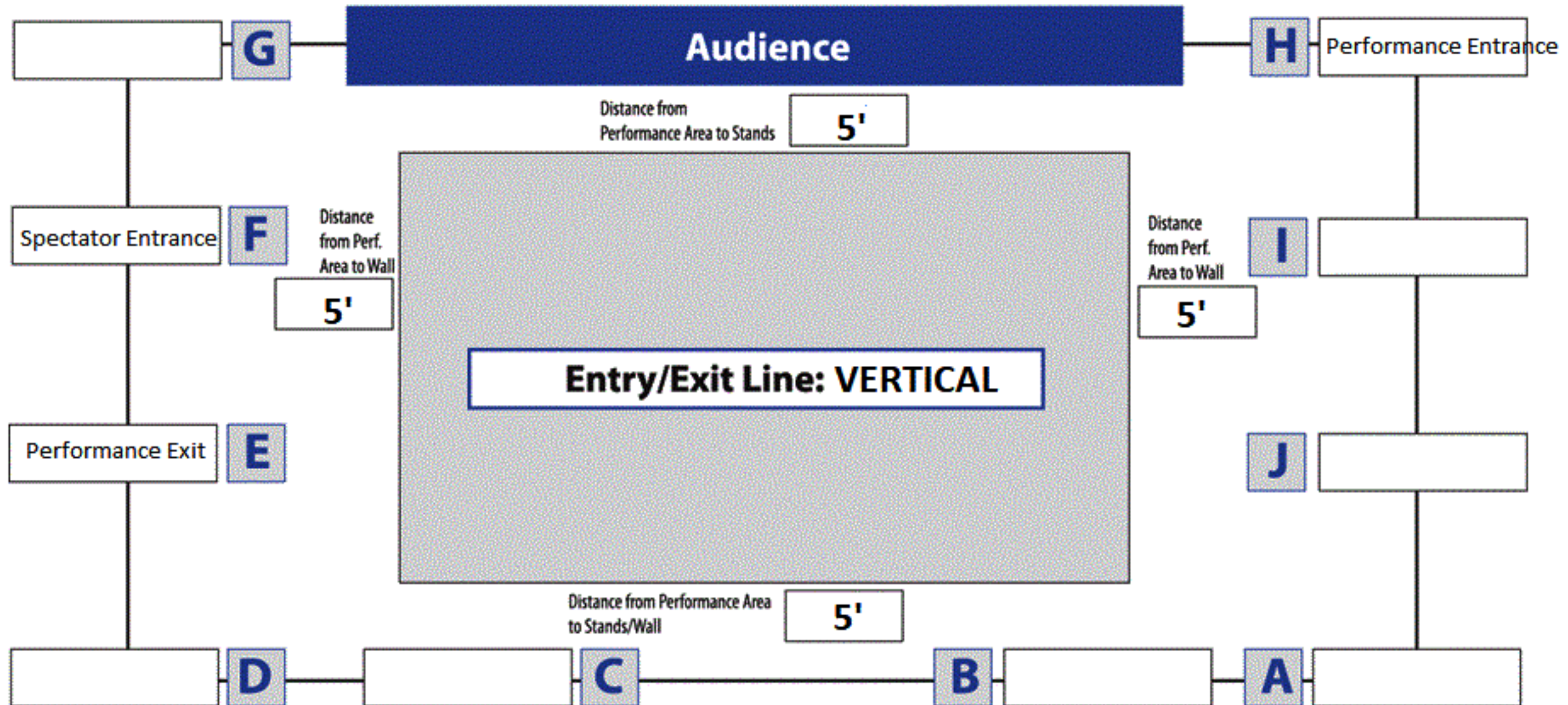




location name

POWHATAN HS

Minimum Performance Area 60 x 90



Minimum Ceiling Height Lowest Point
including beams/rafters

25'

Are there any low-hanging obstructions?
(Basketball/Volleyball nets?)
Note in red on diagram

NO

Are the gym Entry/Exit doors Single-
Wide, Double-Wide, or Double-Wide with
non removable bar?

**DOUBLE W/BARS
REMOVED**

Exact dimensions of Entry/Exit door to be
used at the show

52"