

**CUMBERLAND HIGH SCHOOL
FULL COLOR GUARD PANEL**

LOCATION: Cumberland High School

ADDRESS: 15 School Road, Cumberland, VA 23404

POC/EMAIL/PHONE: Scott Gordon/sgordon@cucps.k12.va.us/804-687-2532

Cody Hinson/chinson@emptyreanperformingarts.org/804-241-7463

TRAVEL OUTSIDE DURING MIGRATION: No

GYM AREA: 68' X 84'

GYM PERFORMANCE AREA: 60' X 84'

GYM ENTRY DOOR WIDTH: 5'6" center bar removed

GYM EXIT DOOR WIDTH: 5'6" center bar removed

EQUIPMENT PROP STAGING AND/OR STOWING: Hallways throughout the school. Look for signs with your school name on it.



APPROXIMATE CEILING

HEIGHT: 28'

TIMING LINE: VERTICAL



←Entry type door

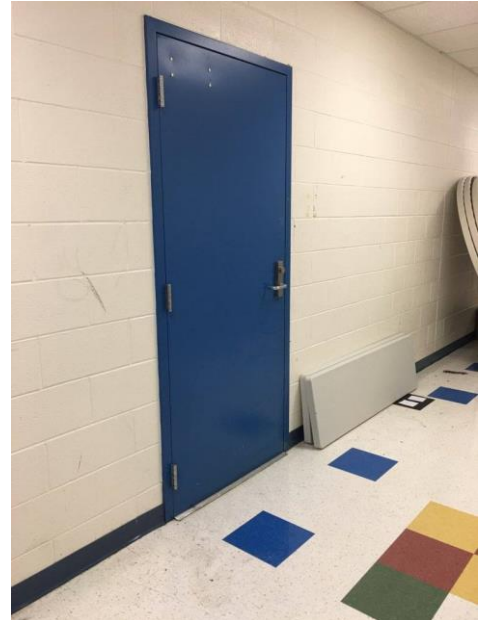
Exit type door→



BODY WARM UP ROOM: Stage in Cafeteria
SEPARATE ENTRANCE AND EXIT: No
BODY WARM UP MEASUREMENTS:
OBSTRUCTIONS: No
DISTANCE TO EQUIPMENT WARM UP: Approx 100'



ENTER/EXIT
TO BODY
WARM UP –
NO
SEPARATE
DOORWAY



EQUIPMENT WARM UP ROOM / PERCUSSION WARM UP A & FLOOR FOLDING: Aux Gym

SEPARATE ENTRANCE AND EXIT: Yes

EQUIPMENT WARM UP MEASUREMENTS: 60' X 80'

CEILING HEIGHT: Approx 24'

OBSTRUCTIONS: No

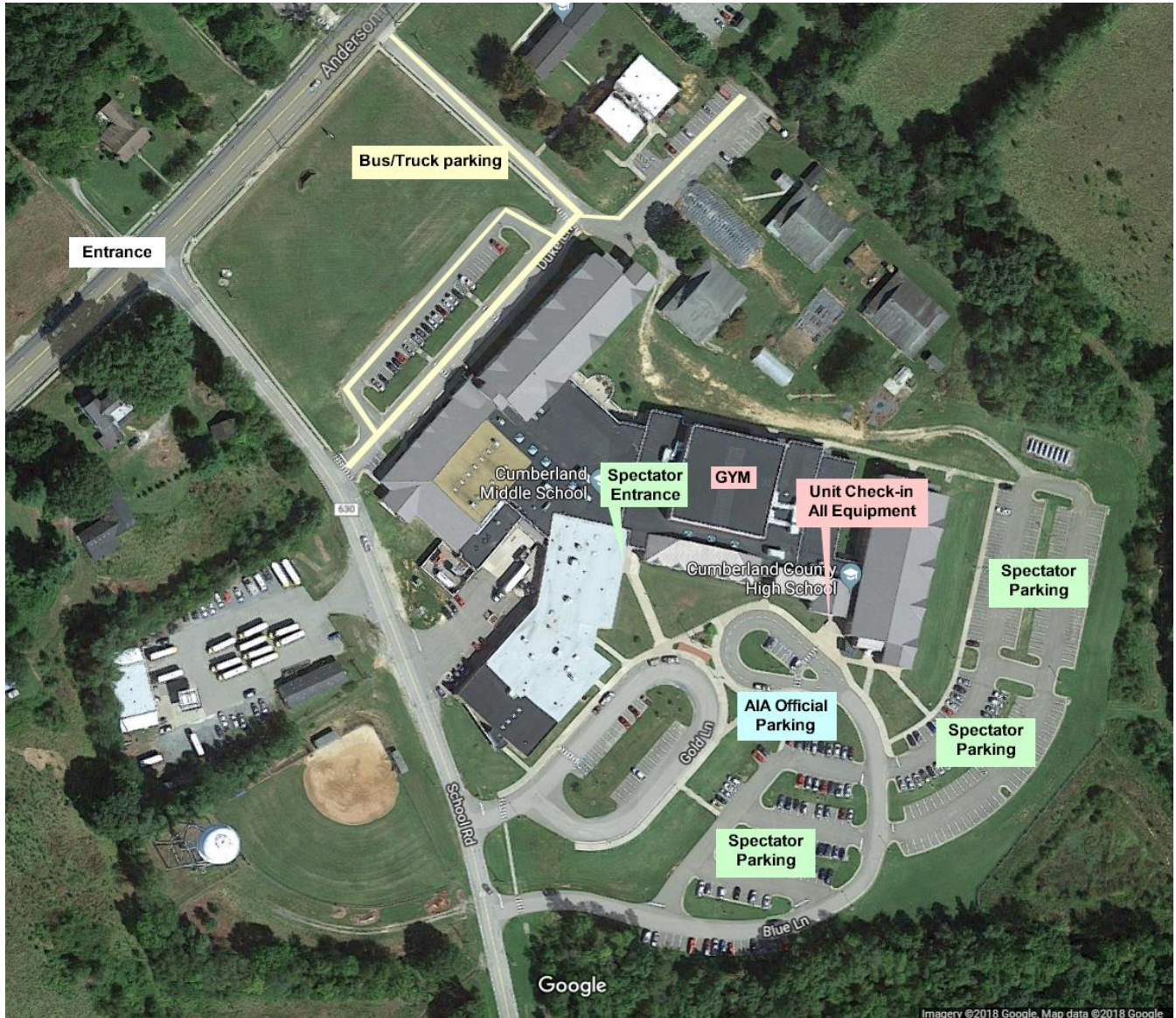
DISTANCE TO PERFORMANCE AREA: Approx 135'

SOUND CARRY TO PERFORMANCE AREA: No

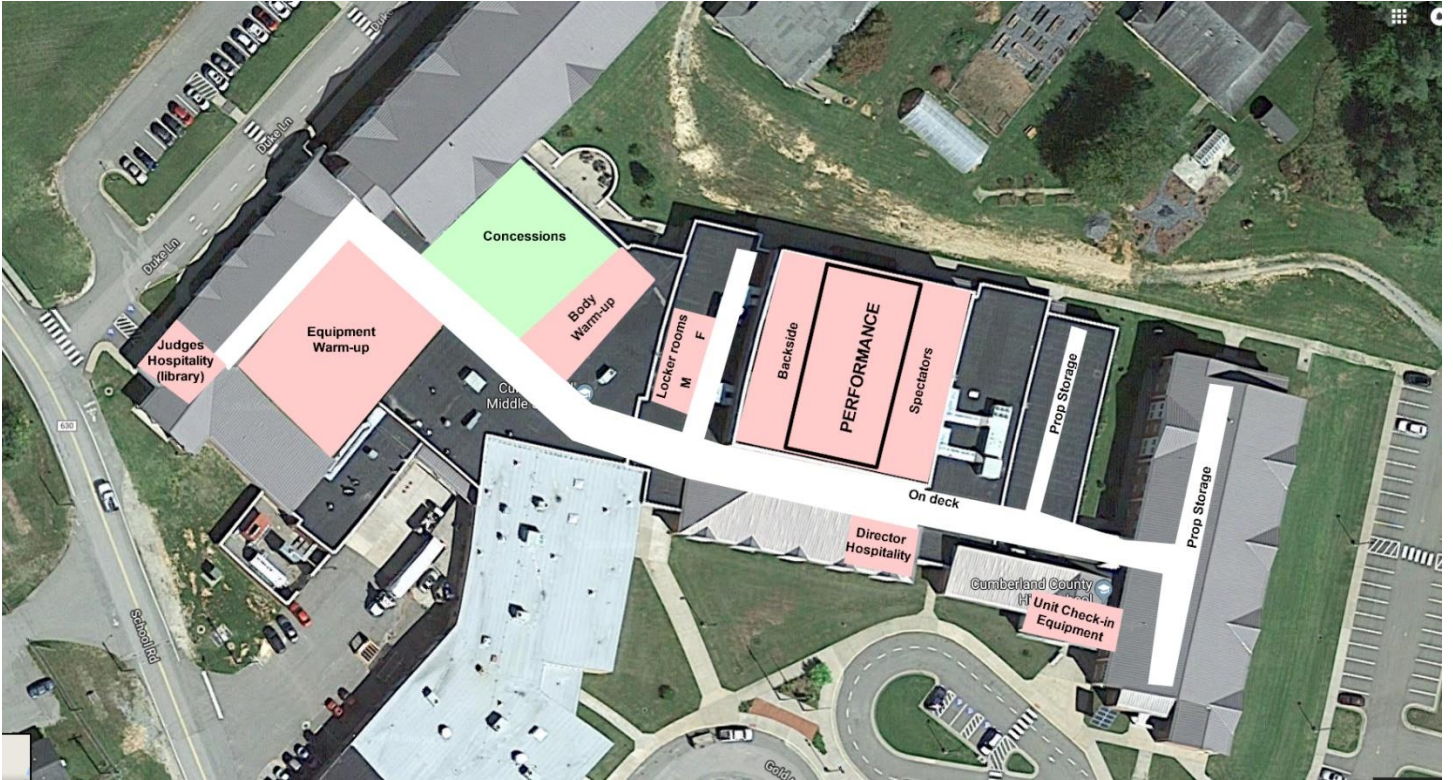


EQUIPMENT ROOM ENTRANCE/EXIT TYPE DOOR

OUTSIDE MAP



INSIDE MAP USING OUTSIDE MAP



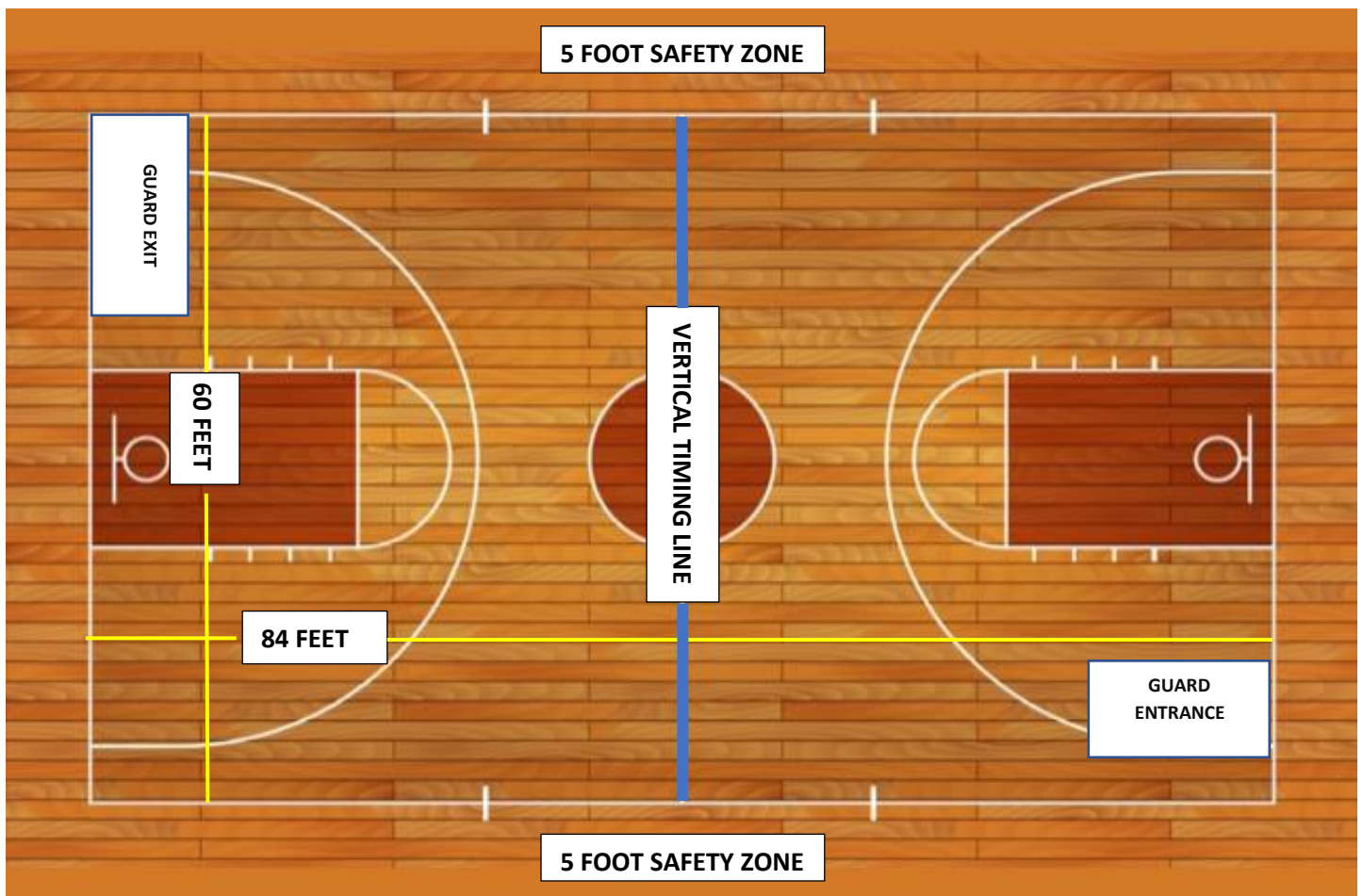


Cumberland High School Competition Area

All AIA contest sites must have a minimum of 70' x 100' of gym area to accommodate a five (5) foot "safety zone" from spectator seating. If no spectators are seated on the left or right sides of the gym area, then the "safety zone" will be eliminated on the left and right sides of the competition area and can extend to the maximum of 78' x 106'.

The "competition area" at this event measures approximately 60' x 84'. All performing groups must be prepared to perform within that area. Floor tarps may not extend into the "safety zones" per rules found in the Winterguard International Adjudication Manual and Rulebook.

SPECTATOR SEATING



BACKSIDE SEATING