

HAMPTON COLISEUM – COLOR GUARD SHOW

VENUE: Hampton Coliseum

ADDRESS: 1000 Coliseum Drive, Hampton, VA 23666

POC/EMAIL/PHONE: Nancy [Ro/nancy.ro@atlanticindoor.org](mailto:Nancy.ro@atlanticindoor.org)/703-489-9014

Carly Philp/carly.philp@atlanticindoor.org/804-389-3274

TRAVEL OUTSIDE DURING MIGRATION: No

ARENA FLOOR SIZE: 120' X 240'

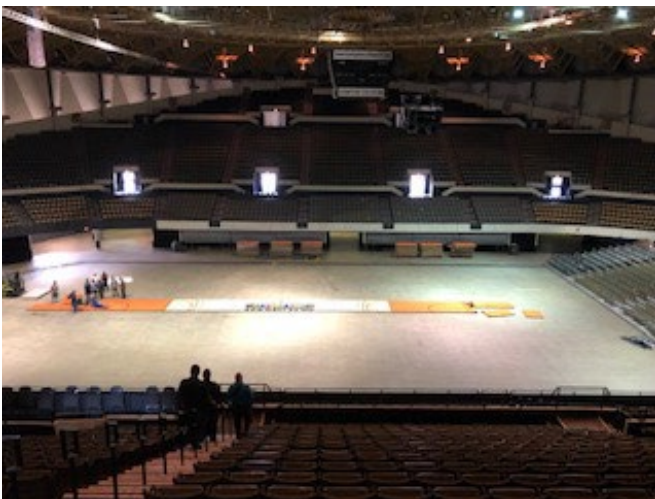
PERFORMANCE AREA: 78' x 108'

ARENA ENTRY WIDTH: approx. 10'

ARENA EXIT WIDTH: approx. 10'

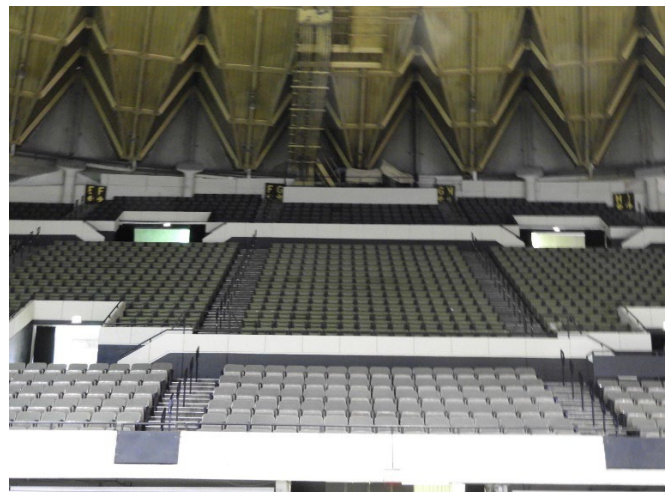
EQUIPMENT PROP STAGING AND/OR STOWING: 74' wide corridor (see pics below)

TIMING LINE: VERTICAL



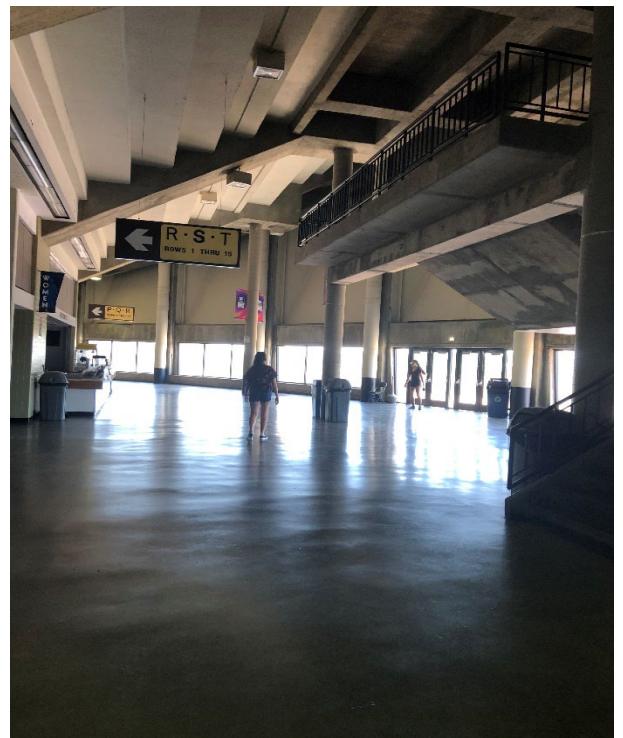
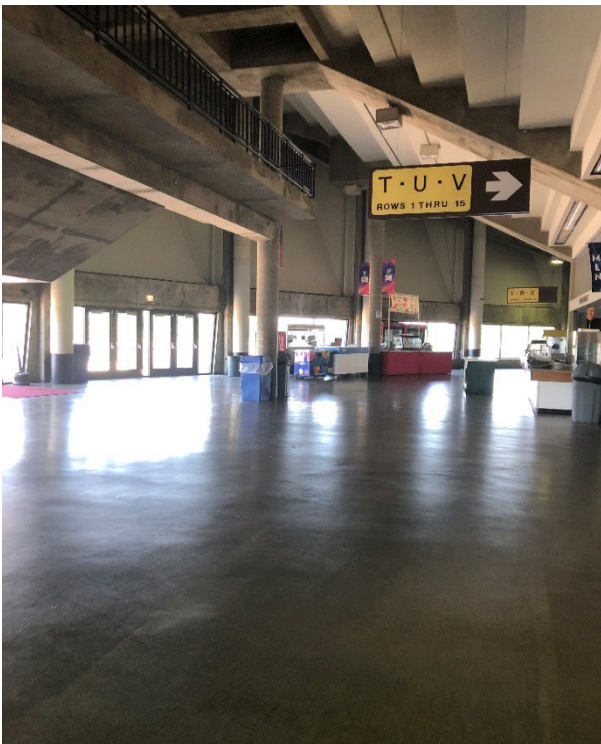
View of performance area
from the spectator
seating.

View of
spectator/judge seating
from performance area.





BODY WARMUP: Chesapeake Room
SEPARATE ENTRANCE AND EXIT: Yes
BODY WARMUP MEASUREMENTS: 46' X 38'
OBSTRUCTIONS: NO
DISTANCE TO EQUIPMENT WARMUP: Approx. 500'

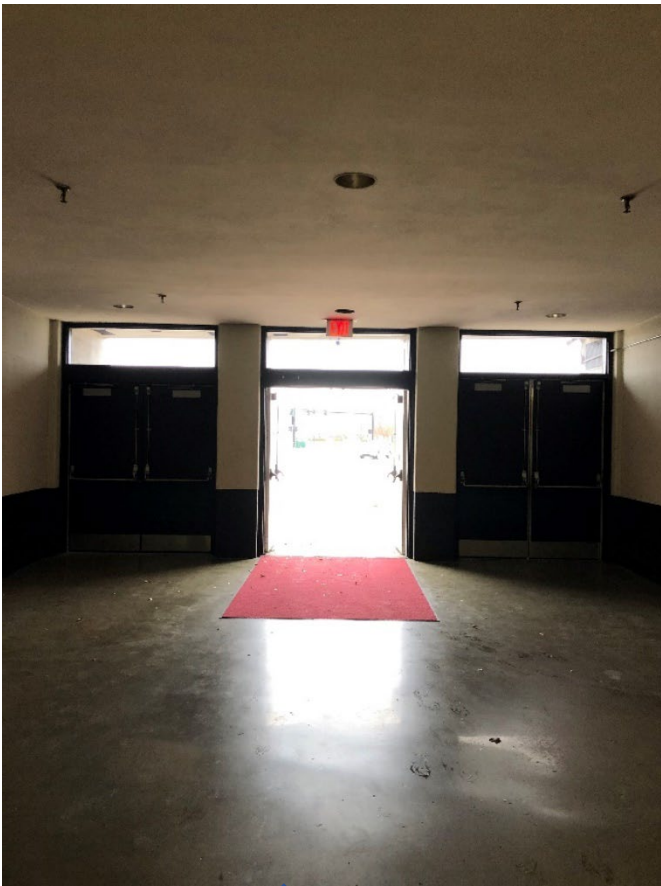


EQUIPMENT WARMUP: Main Concourse opposite side from concession
SEPARATE ENTRANCE AND EXIT: Yes
EQUIPMENT WARMUP MEASUREMENTS: The entire corridor
CEILING HEIGHT: 30 ft, but there is a ramp just out the doors and higher
 tossing can be done there
OBSTRUCTIONS: YES – signs and stairway
SOUND CARRY TO PERFORMANCE AREA: Shouldn't but to be sure,
 don't play it overly loud
DISTANCE TO PERFORMANCE AREA: Approx. 300'-400'

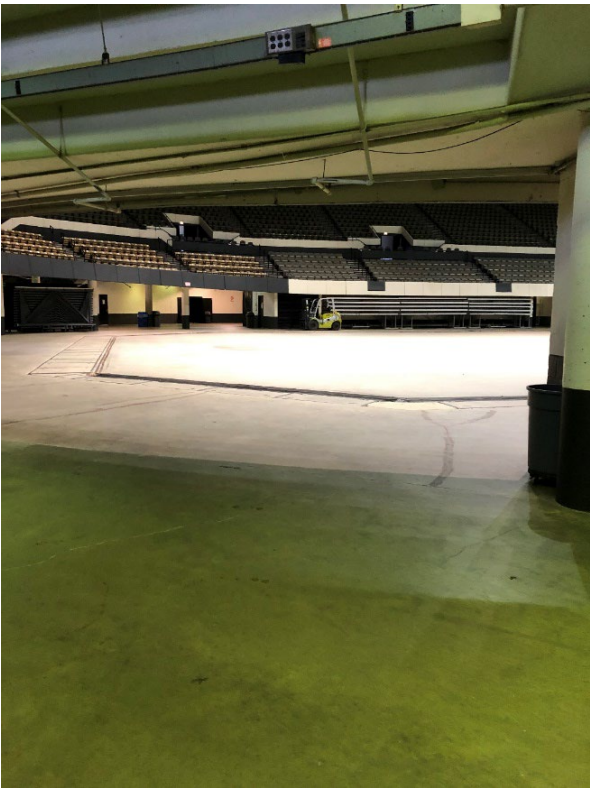
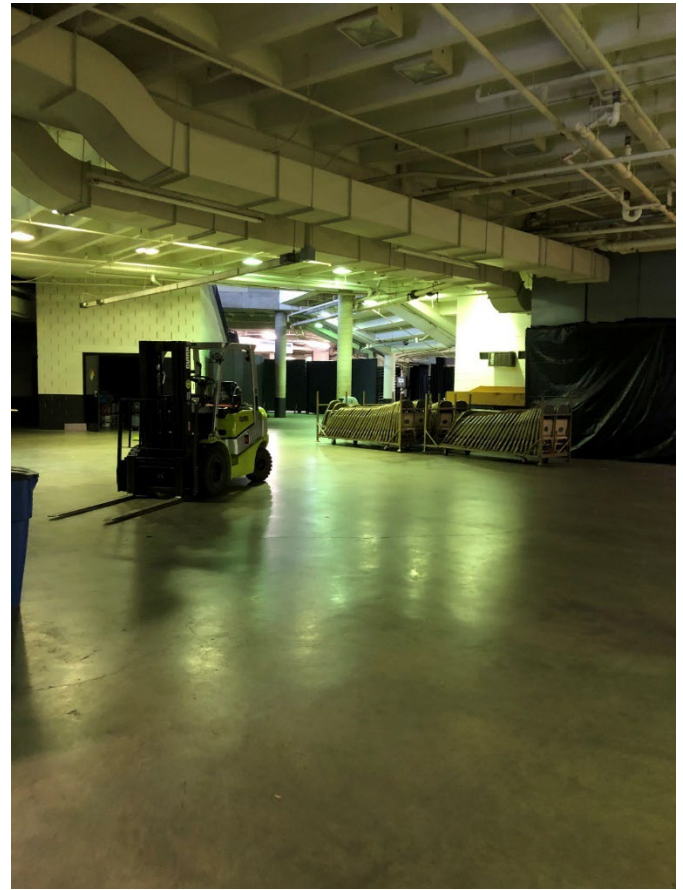
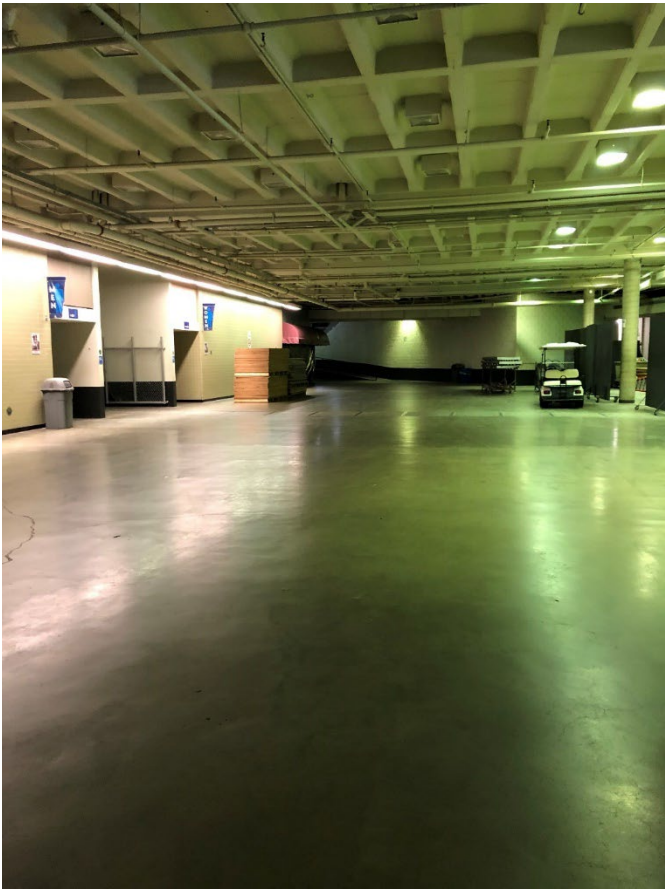


← EQM UNLOADING
& PERFORMER
ENTRANCE TO
GATHER PROP/FLOOR
& TO ON DECK

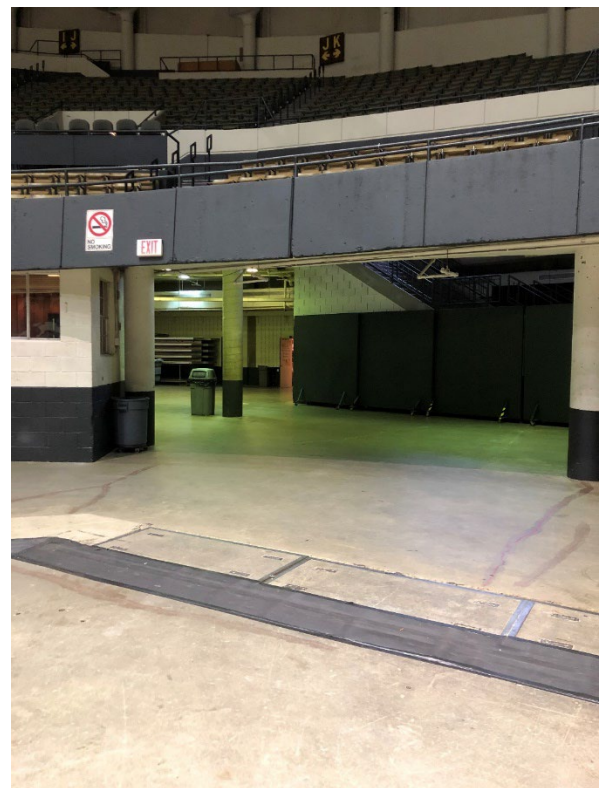
APPROXIMATE LOCATION
FOR TENT "B" & EQM
LOADING



The **two images above** reflect unit unloading of equipment, floors, and props.
The **two images below** are equip., floor, and prop storage.

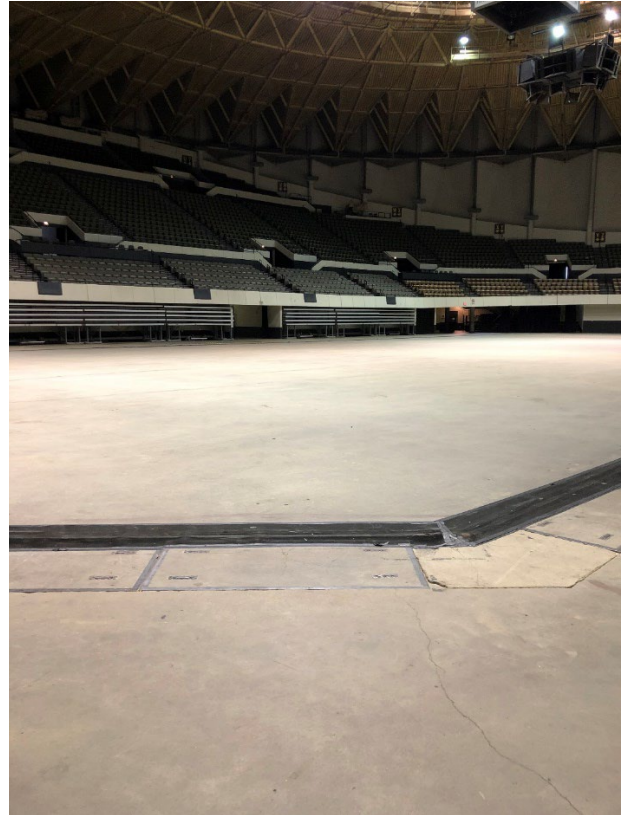


On Deck
Looking into
Performance
Area



Looking at On
Deck from
Performance
Area

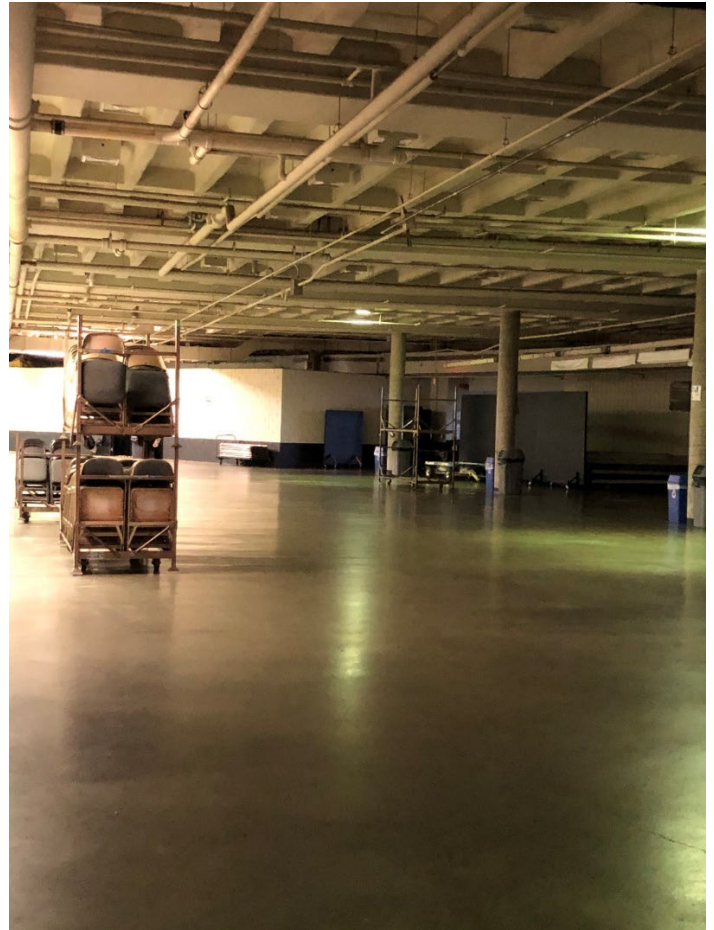
Performance
Area from
On Deck



Performance area exit



Floor Folding
just outside
performance
area exit



****NOTE****

The floor folding
area and prop
storage area are the
same size; 74' wide



****NOTE****

ONLY INDIVIDUALS WITH
WRISTBANDS WILL BE ABLE TO
ENTER/EXIT THE UNLOADING
AND LOADING AREA.

****DIRECTORS****

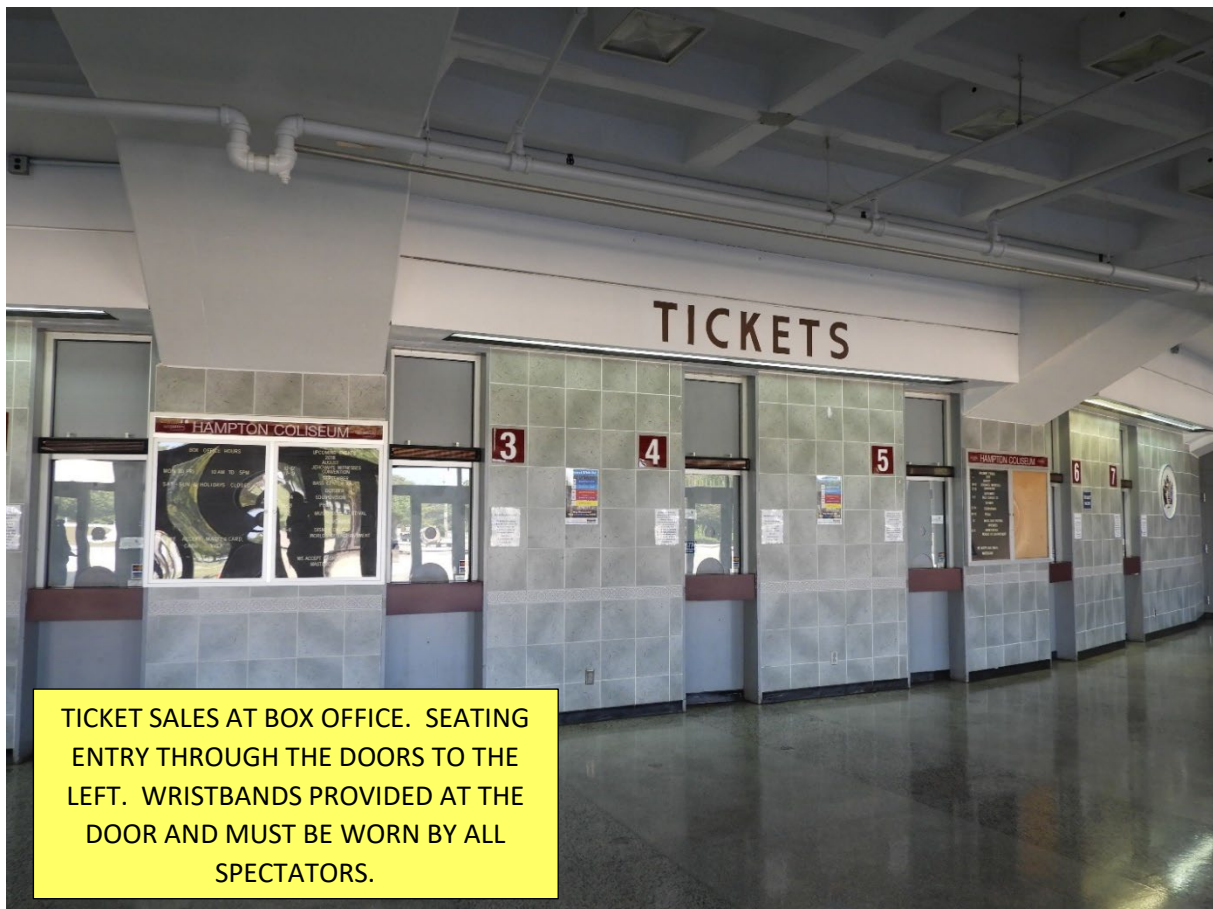
PLEASE MAKE SURE YOUR
PERFORMERS AND
VOLUNTEERS HAVE THEIR
WRISTBANDS ON WHEN IN
THIS AREA.



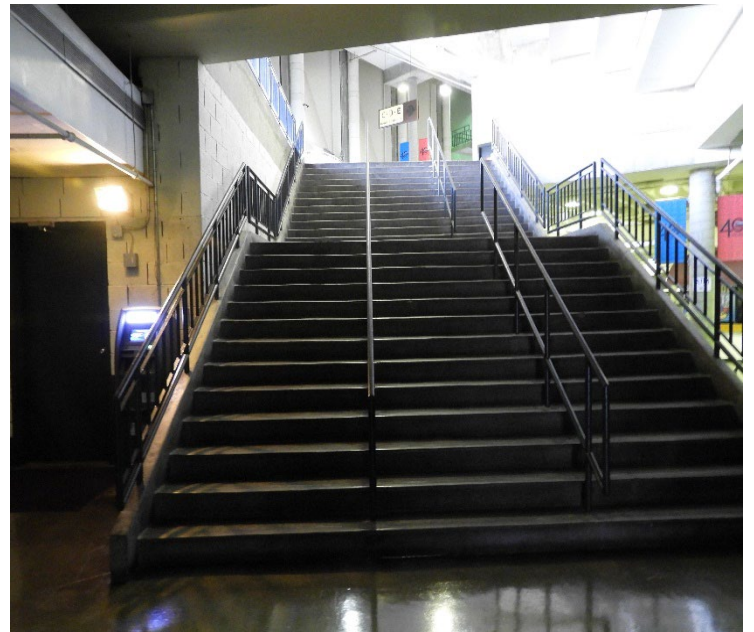
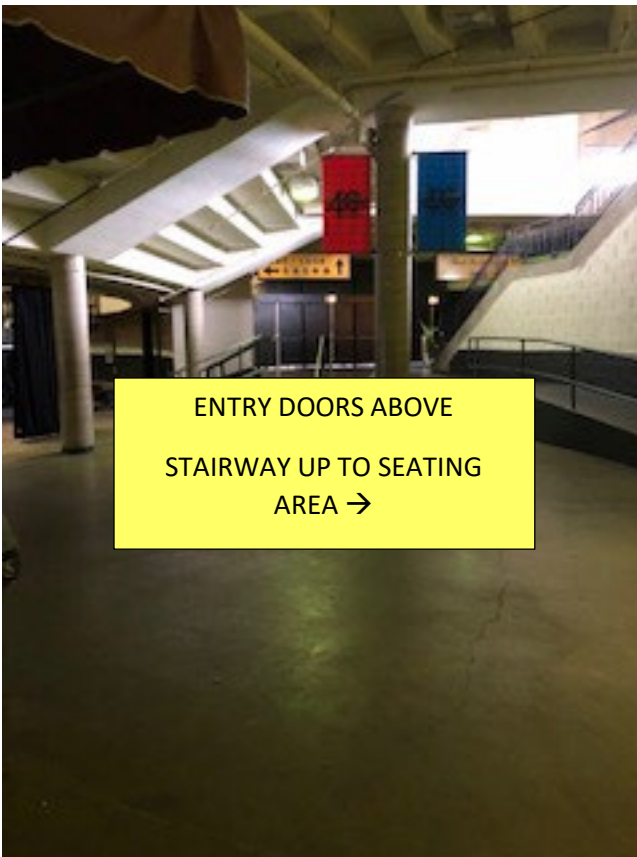
EXIT TO EQM LOADING;
INSIDE VIEW TO THE LEFT
AND OUTSIDE VIEW
BELOW.

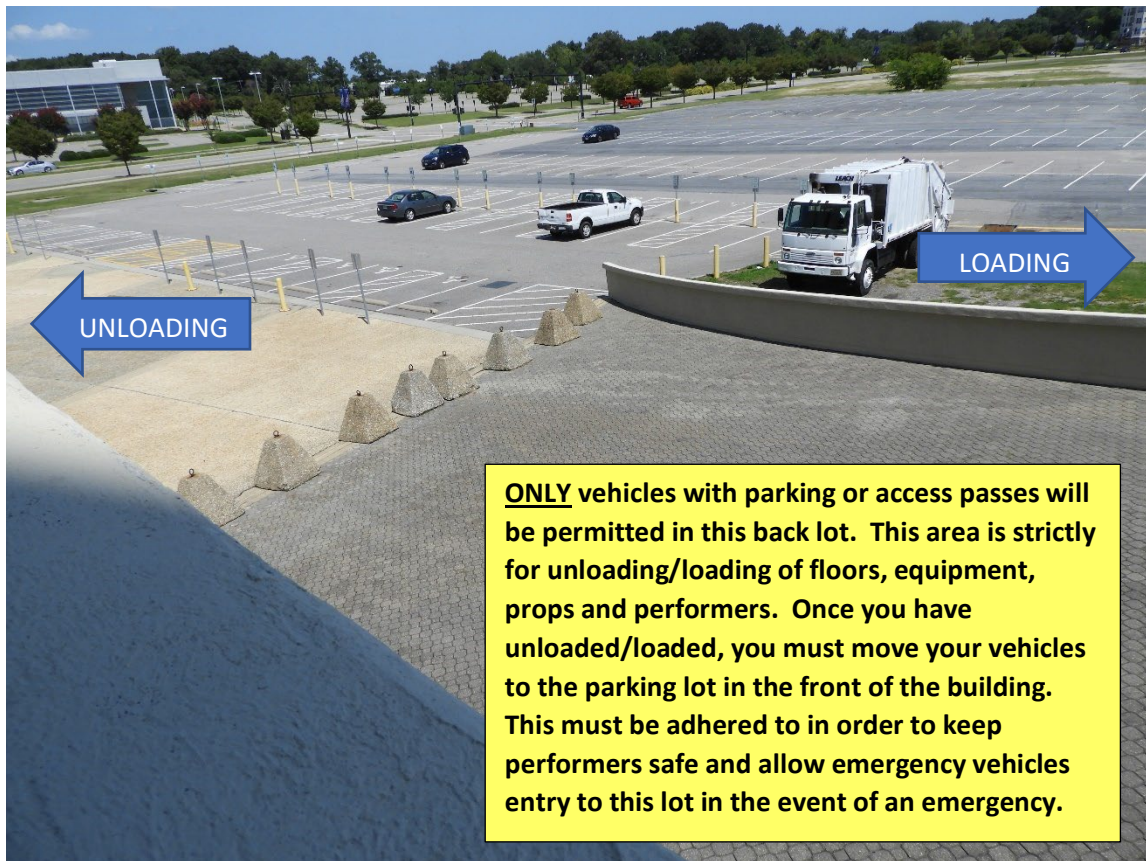


**EQM LOADING INSIDE
GATED AREA. SEVERAL
UNITS CAN LOAD AT
ONE TIME BUT MUST
MOVE QUICKLY.**



**TICKET SALES AT BOX OFFICE. SEATING
ENTRY THROUGH THE DOORS TO THE
LEFT. WRISTBANDS PROVIDED AT THE
DOOR AND MUST BE WORN BY ALL
SPECTATORS.**

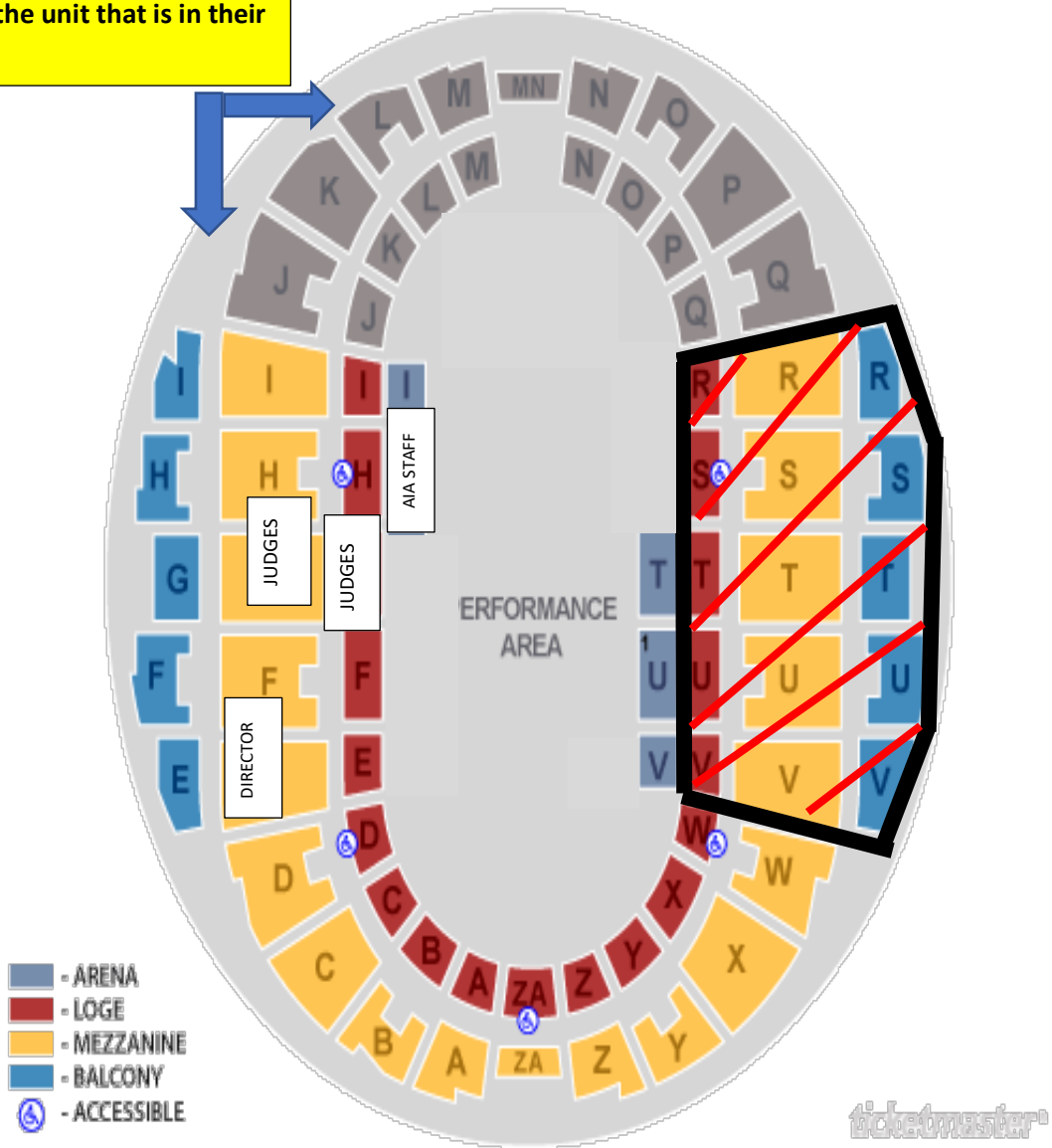




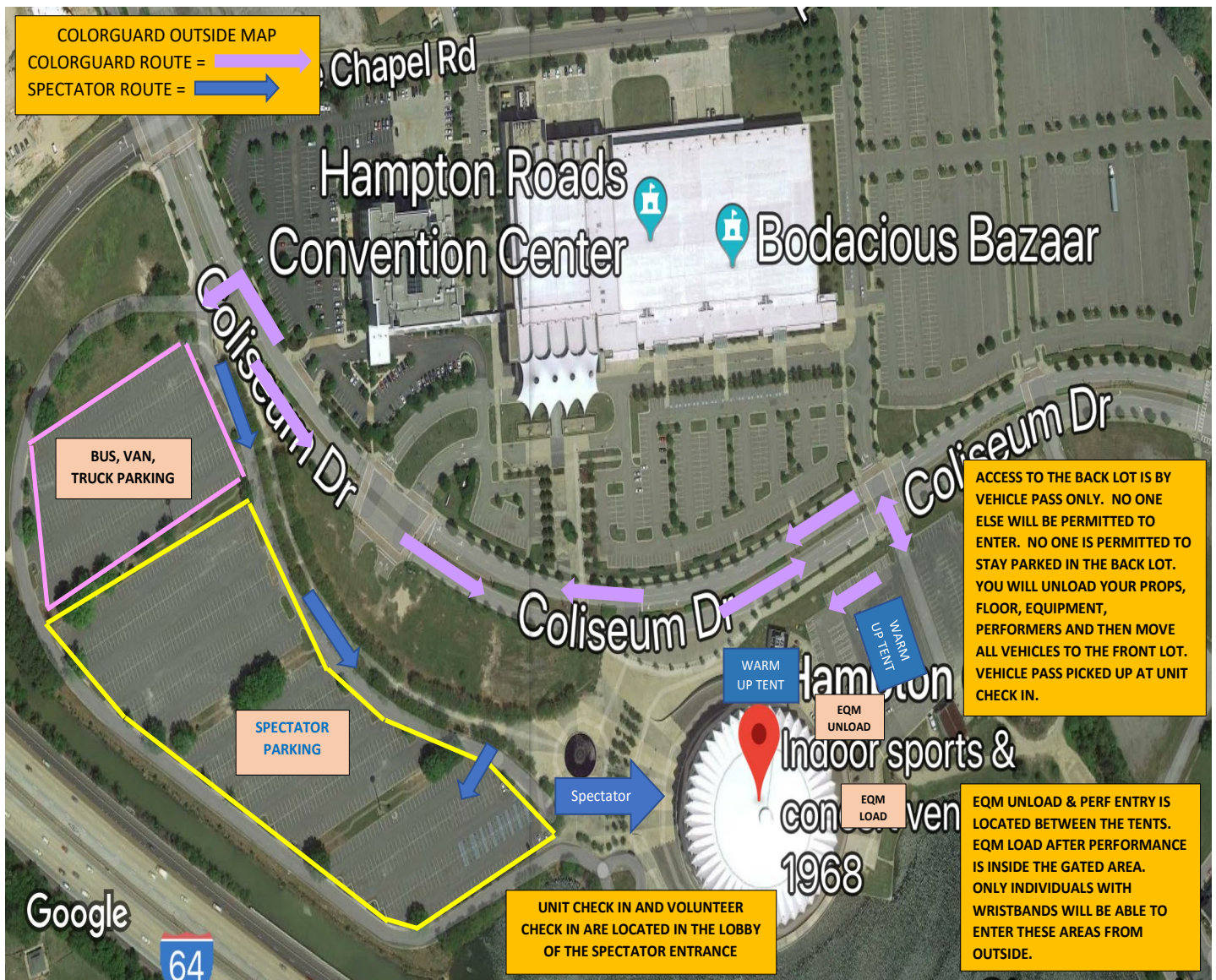
ONLY vehicles with parking or access passes will be permitted in this back lot. This area is strictly for unloading/loading of floors, equipment, props and performers. Once you have unloaded/loaded, you must move your vehicles to the parking lot in the front of the building. This must be adhered to in order to keep performers safe and allow emergency vehicles entry to this lot in the event of an emergency.

Equipment warmup will occur on the main concours area that is opposite of concessions. You will need to go upstairs. Units waiting to enter their equipment warmup are asked to wait on the first stair way platform so as not to interfere with the unit that is in their warmup time.

MAIN CONCOURSE LEVEL



COLORGUARD EXTERIOR MAP



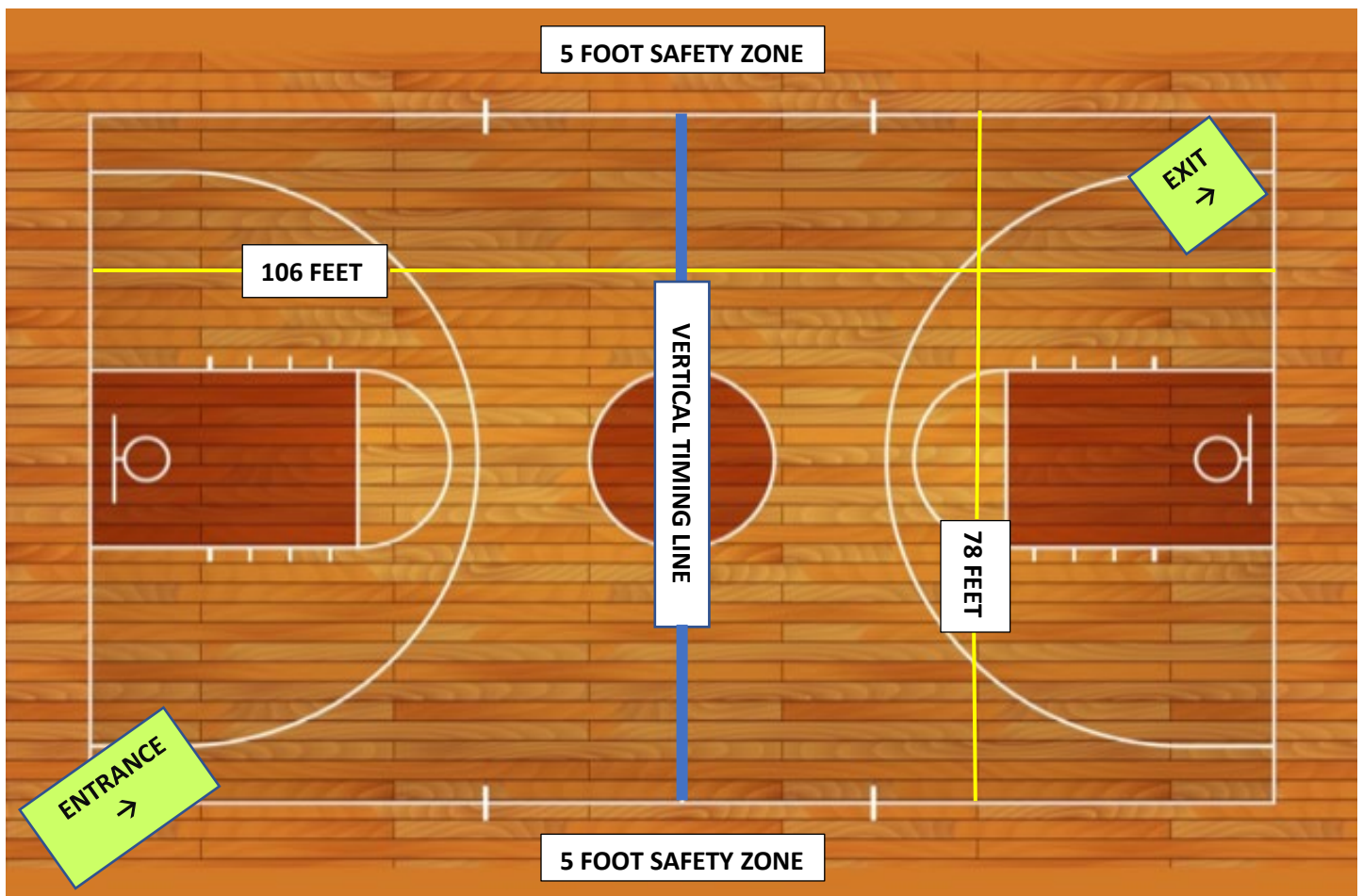


Hampton Coliseum Competition Area

All AIA contest sites must have a minimum of 70' x 100' of gym area to accommodate a five (5) foot "safety zone" from spectator seating. If no spectators are seated on the left or right sides of the gym area, then the "safety zone" will be eliminated on the left and right sides of the competition area and can extend to the maximum of 78' x 106'.

The "competition area" at this event measures approximately 78' x 106'. All performing groups must be prepared to perform within that area. Floor tarps may not extend into the "safety zones" per rules found in the Winterguard International Adjudication Manual and Rulebook.

BACKSIDE SEATING



SPECTATOR SEATING