

**SHERANDO HIGH SCHOOL
Colorguard**

SCHOOL: Sherando High School

ADDRESS: 185 South Warrior Drive, Stephens City, VA 22655

POC/EMAIL/PHONE: Kayla Wright/kaytay0903@gmail.com/317-341-4073

Joel Costner/540-869-0060

TRAVEL OUTSIDE DURING MIGRATION: YES from Body Warmup to Equipment Warmup

GYM PERFORMANCE AREA: 60' X 94'

GYM ENTRY DOOR WIDTH: Double wide with center bar removed

GYM EXIT DOOR WIDTH: Double wide with center bar

EQUIPMENT PROP STAGING AND/OR STOWING: Wide hallway just off the gym. You will pass it as you migrate to perform.



← Performer's View to the Judges.

CEILING HEIGHT: 45'

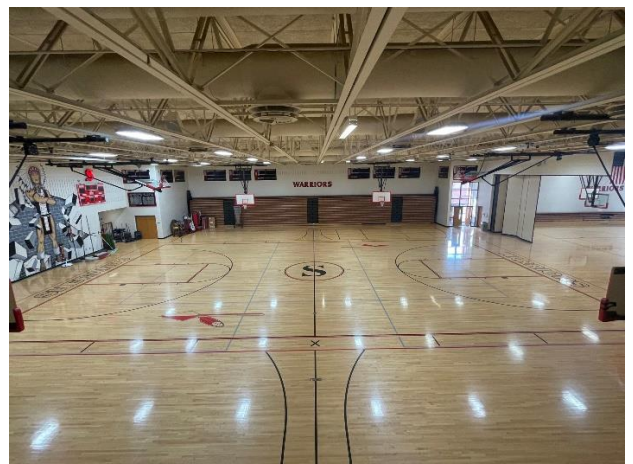
OBSTRUCTIONS: Ceiling Beams & Lights

TIMING LINE: Vertical

Judges View from the press box.



Note: Divider to the right will be closed during performances as the aux gym seen will be equipment warmup. Equipment warmup must be silent due to its close proximity to the performance area.





CG entrance to main
gym to perform.
Image left.



CG exit from gym after
their performance. Image
right. →

Floor Folding is outside this
door.



FLOOR FOLDING – space is just outside the main gym and near concessions



BODY WARMUP ROOM: Choir Room

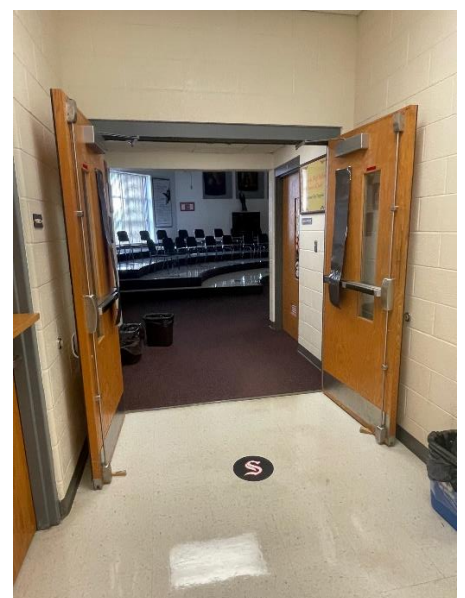
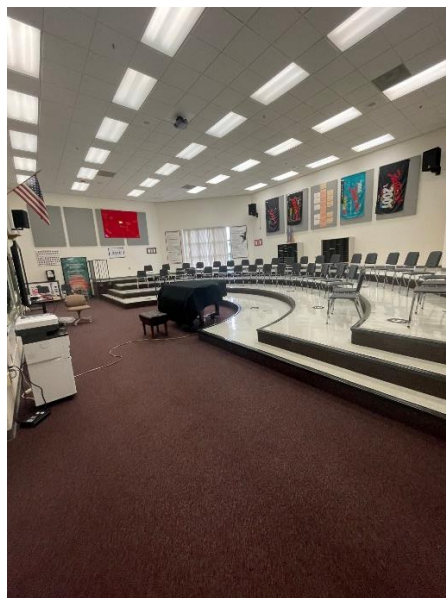
SEPARATE ENTRANCE AND EXIT: Yes (entrance is single wide and exit is double wide)

BODY WARMUP MEASUREMENTS: 50' x 39'

OBSTRUCTIONS: Risers as shown in the middle image below

DISTANCE TO EQUIPMENT WARMUP: Approx. 100'

OF NOTE: The enter/exit doors are single wide.



EQUIPMENT WARMUP ROOM: Aux Gym

SEPARATE ENTRANCE AND EXIT: Yes

EQUIPMENT WARMUP MEASUREMENTS: 71' X 100'

CEILING HEIGHT: 45'

OBSTRUCTIONS: YES – baseball nets hanging from the ceiling in the center of the gym

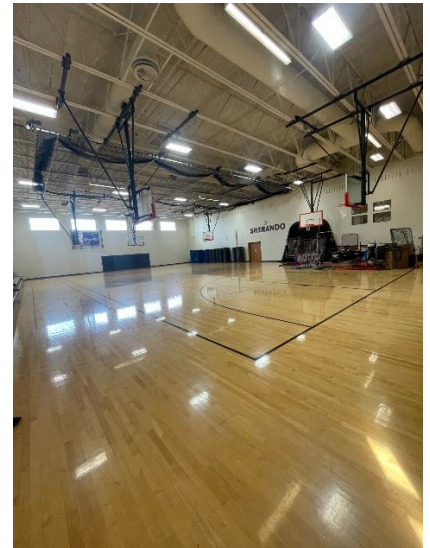
SOUND CARRY TO PERFORMANCE AREA: YES – EQM WARMUP MUST BE DONE WITHOUT MUSIC. THE AUX GYM IS RIGHT NEXT TO THE MAIN GYM AND THE ONLY SEPERATION IS A RETRACTABLE DIVIDER.

DISTANCE TO PERFORMANCE AREA: Approx. 60'

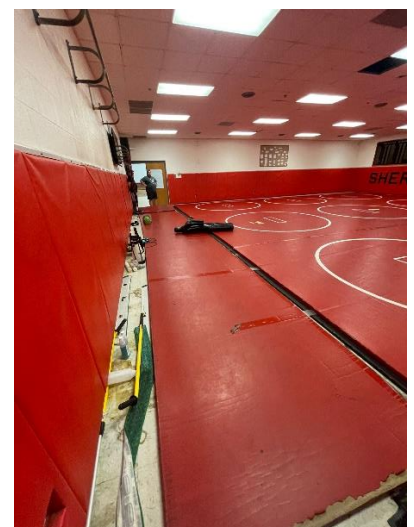


Enter the Aux gym through the single door just past the double doors in the image to the left. This puts you in the aux gym in the as shown in the image to the right. This puts you close to the main gym as shown in the image below.

This is the reason your equipment warm up must be without music.



The exit from the aux gym will be through the wrestling room. The image to the left is the entrance to the wrestling room and the image to the right is the walk through the wrestling room. On Deck to perform is just outside the wrestling room.



OUTSIDE MAP

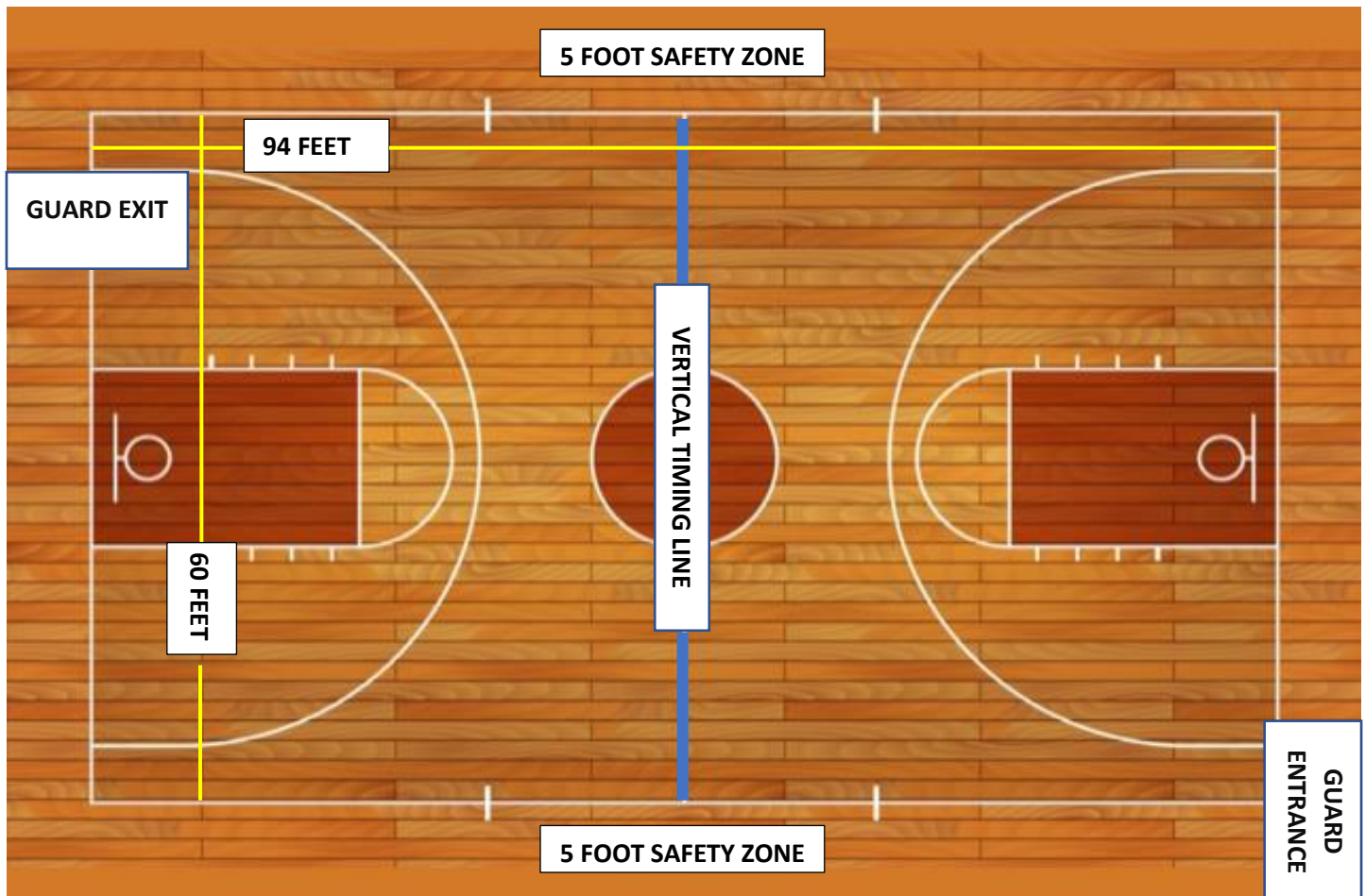




All AIA contest sites must have a minimum of 70' x 110' of gym area to accommodate a five (5) foot "safety zone" from spectator seating. If no spectators are seated on the left or right sides of the gym area, then the "safety zone" will be eliminated on the left and right sides of the competition area and can extend to the maximum of 70' x 110'.

The "competition area" at this event measures approximately 60' X 94'. All performing groups must be prepared to perform within that area. Floor tarps may not extend into the "safety zones" per rules found in the Winterguard International Adjudication Manual and Rulebook.

BACKSIDE SEATING

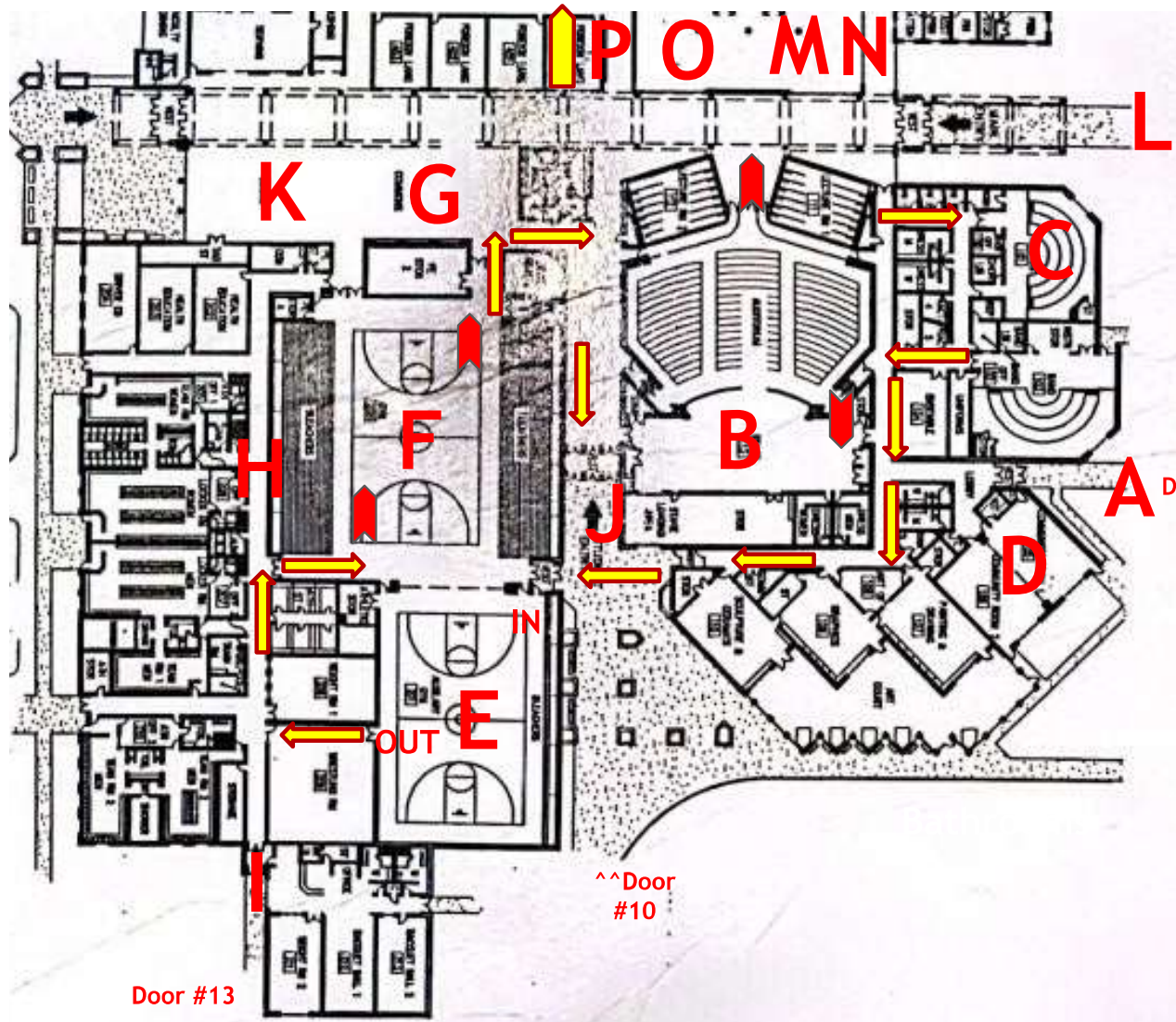


SPECTATOR SEATING

Guard w/Unit Holding

- A-Unit Check In (Door #3)
- B-Unit Holding (Auditorium)
- C-Body Warm Up (Choir Room)
- D-Volunteer Room (Community Room)
- E-GUARD Equipment Warm Up (Enter through door #11 into Auxiliary Gym)
- ***Walk through wrestling room to tarp/prop holding
- F-Main Gym
- G-Floor Folding (Cafeteria)
- H-GUARD Tarp/Prop/Equipment holding
- I-GUARD Tarp/Prop/Equipment UNLOADING (Door #13)
- J-Tarp/Prop/Equipment LOADING (Door #10)
- K-Cafeteria
- L-Spectator Entrance (Door #1)
- M-Judge's Hospitality & Critique (Library-Creative Commons)
- N-Tabulation (Library-Work Room)
- O-Director's Hospitality (Library)
- P-Additional bathrooms

***Guard will go outside briefly from Body warmup to Equipment warmup



Door #1

Door #3

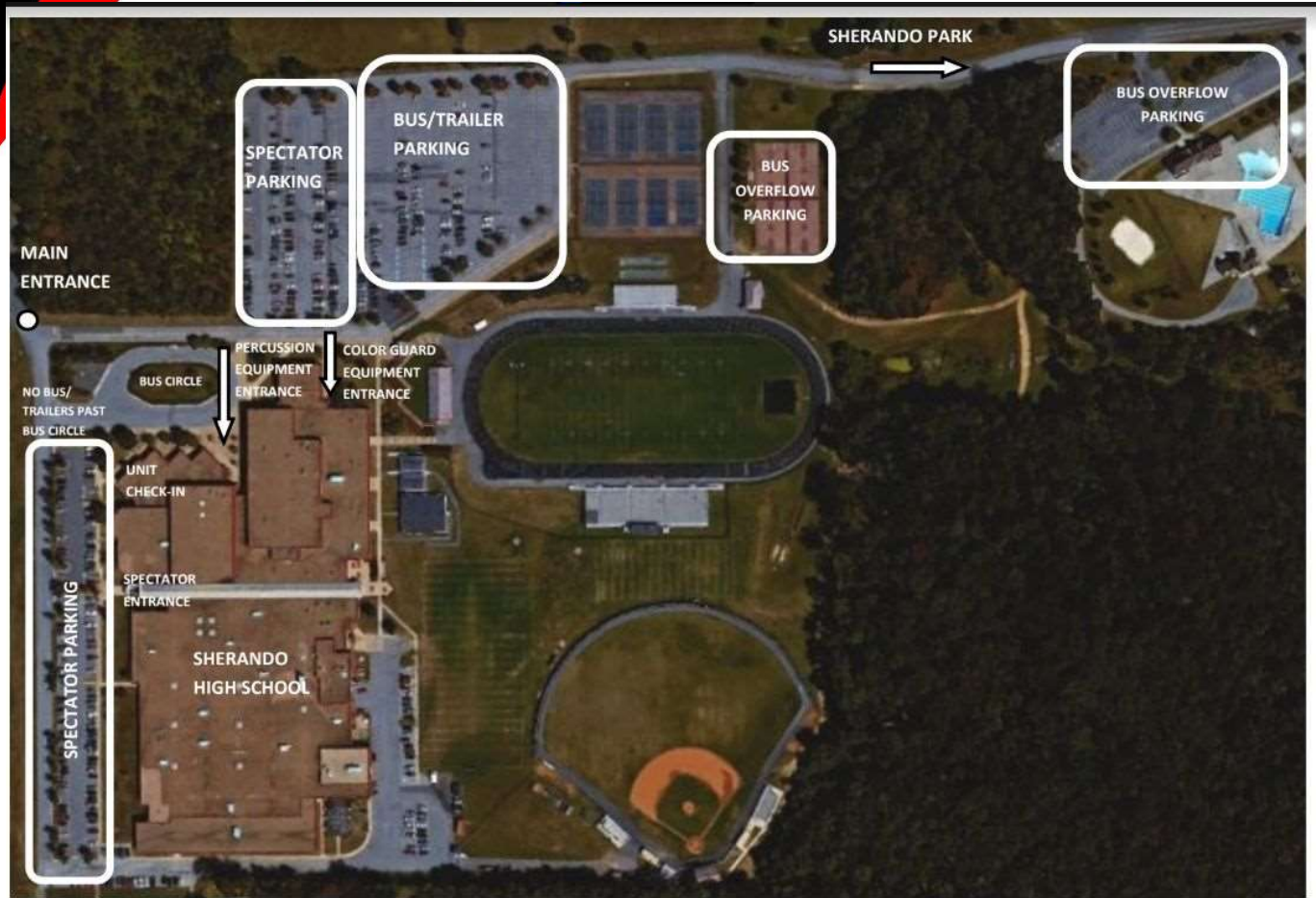
^^Door #10

Door #13

SPECTATOR PARKING

BUS/TRUCKS/OVERFLOW SPECTATOR PARKING

Parking-Overview



- Spectators turn left after entering gates
- Units drop off in bus circle
- Buses and trailers park in student lot; overflow by pool at Sherando Park
- ALL vehicles Exit through Sherando Park