

**WOODGROVE HIGH SCHOOL
FULL JUDGES PANEL – PERCUSSION**

LOCATION: Woodgrove High School

ADDRESS: 36811 Alder School Road, Purcellville, VA 20132

POC/EMAIL/PHONE: Nicole Prada Kinman/woodgroveguard@gmail.com/

TRAVEL OUTSIDE DURING MIGRATION: Yes

GYM AREA: 65' X 114'

GYM PERFORMANCE AREA: 70' X 106'

GYM ENTRY DOOR WIDTH: 6' center bar removed

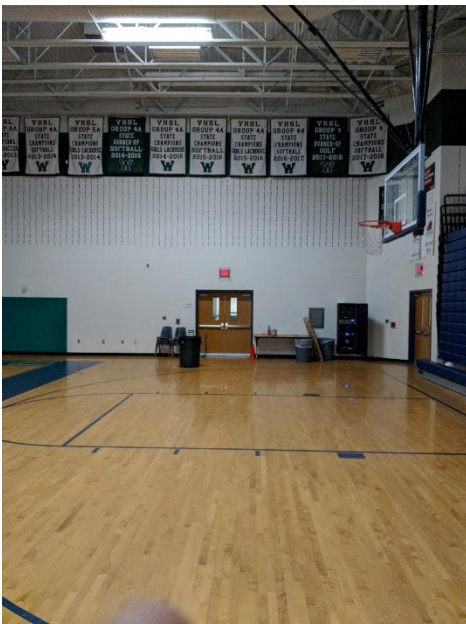
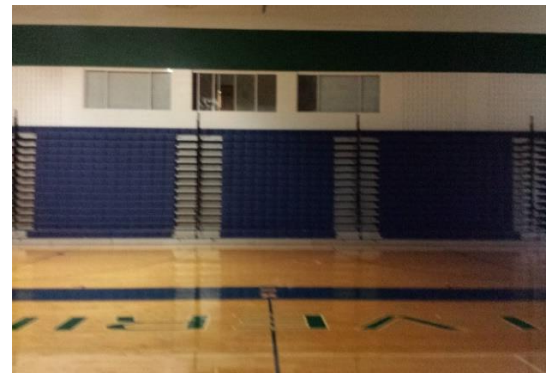
GYM EXIT DOOR WIDTH: 6' center bar removed

EQUIPMENT PROP STAGING AND/OR STOWING: Hallways throughout the school or wrestling room.



CEILING HEIGHT: 23'

**TIMING LINE:
HORIZONTAL**



← PERFORMANCE ENTRANCE

PERFORMANCE EXIT →





PERCUSSION/WINDS WARM UP A: Band Room
SEPARATE ENTRANCE AND EXIT: Yes
PERCUSSION WARM UP MEASUREMENTS: 38'X 54'
OBSTRUCTIONS: NO
DISTANCE TO PERFORMANCE AREA: Approx. 75'



← **WARM UP "A" ENTRANCE**
WARM UP "A" EXIT →



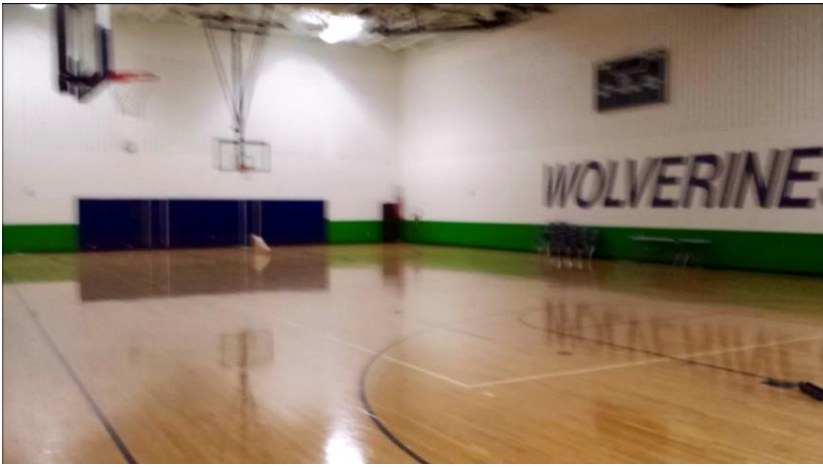


PERCUSSION WARM UP B: Auditorium Stage
SEPARATE ENTRANCE AND EXIT: Percussion – Yes but the two doors are in the same location. See special instructions for further information. Color Guard - No
BODY WARM UP MEASUREMENTS: 20' X 40'
OBSTRUCTIONS: No
DISTANCE TO EQUIPMENT WARM UP: Approx. 75'

PERCUSSION/WINDS WARM UP B ENTRANCE



PERCUSSION/WINDS WARM UP B EXIT



FLOOR FOLDING IN THE AUX GYM

FLOOR FOLDING
ENTRANCE/EXIT

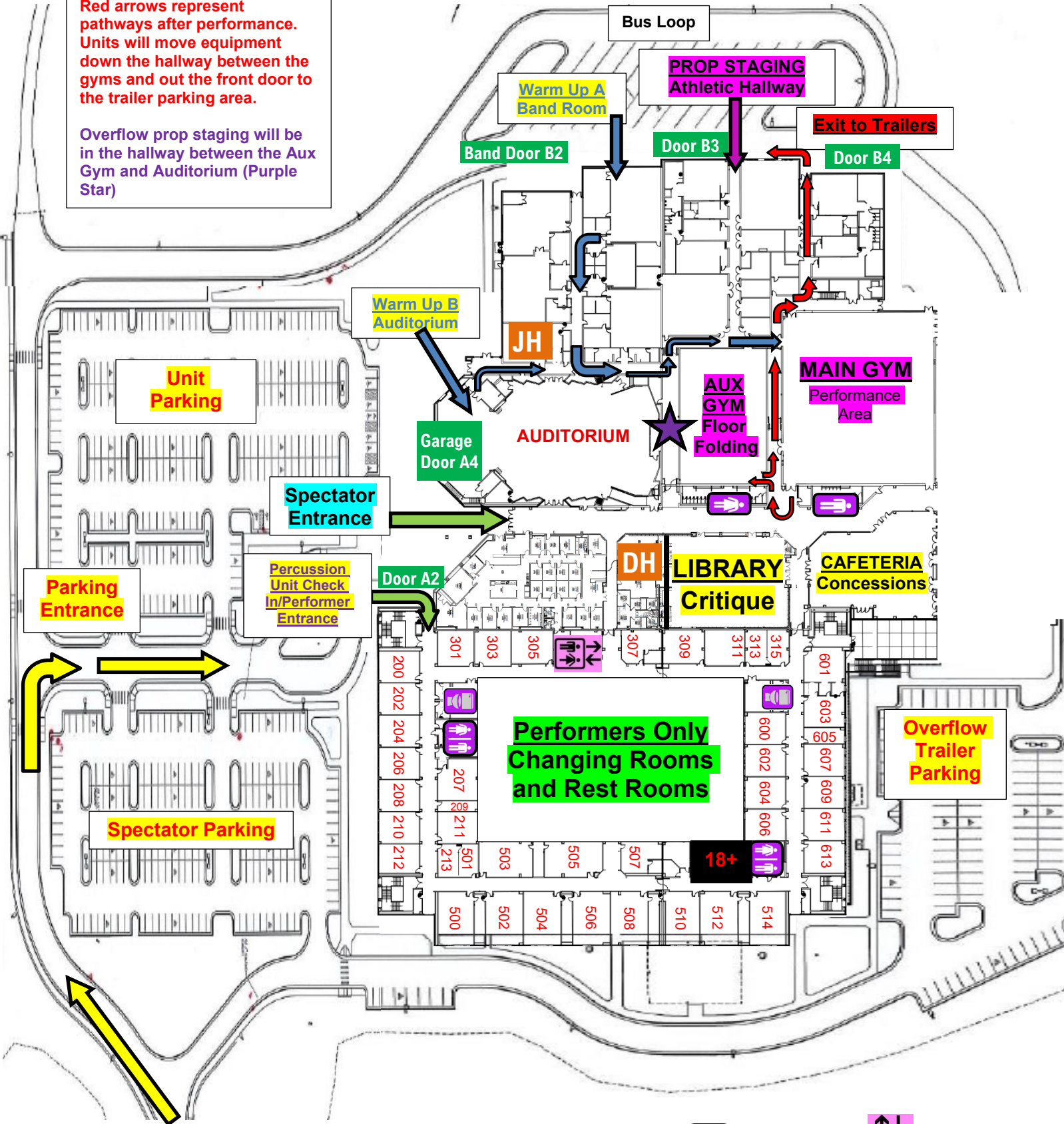


Percussion Competition Flow Map

Blue arrows represent the pathway to the Performance Area

Red arrows represent pathways after performance. Units will move equipment down the hallway between the gyms and out the front door to the trailer parking area.

Overflow prop staging will be in the hallway between the Aux Gym and Auditorium (Purple Star)



 Single-person restrooms
  Restrooms
  Elevator

DH = Director's Hospitality JH = Judge's Hospitality



Atlantic Indoor Association

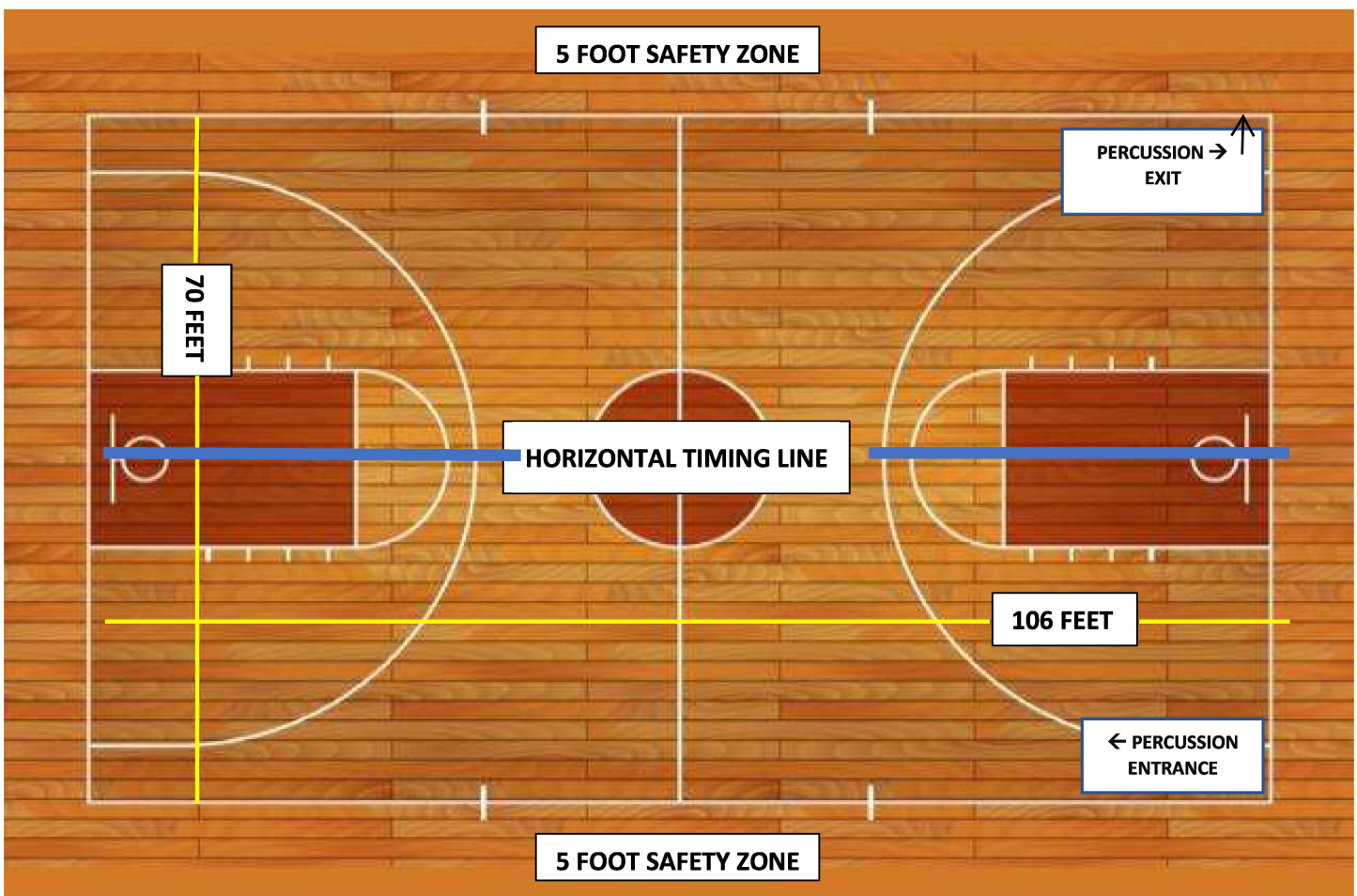
Woodgrove High School

Competition Area

All AIA contest sites must have a minimum of 70' x 100' of gym area to accommodate a five (5) foot "safety zone" from spectator seating. If no spectators are seated on the left or right sides of the gym area, then the "safety zone" will be eliminated on the left and right sides of the competition area and can extend to the maximum of 78' x 106'.

The "competition area" at this event measures approximately 70' x 106'. All performing groups must be prepared to perform within that area. Floor tarps may not extend into the "safety zones" per rules found in the Winterguard International Adjudication Manual and Rulebook.

BACKSIDE SEATING



SPECTATOR SEATING