

LANDSTOWN HIGH SCHOOL Percussion/Winds

LOCATION: Landstown High School

ADDRESS: 2001 Concert Dr., Virginia Beach, VA 23456

POC/EMAIL/PHONE: James Tucker/James.TuckerIII@vbschools.com/757-648-5500

TRAVEL OUTSIDE DURING MIGRATION: No

GYM PERFORMANCE AREA: 80' X 104'

GYM ENTRY DOOR WIDTH: 7'

GYM EXIT DOOR WIDTH: 7'

EQUIPMENT PROP STAGING AND/OR STOWING: Half of the concessions area and hallway behind the gym.



Ceiling Height: 30'

Timing Line: Horizontal



WARM UP A: Band Room

SEPARATE ENTRANCE AND EXIT: Yes

ROOM MEASUREMENTS: 44'x40'

OBSTRUCTIONS: Yes – there is a support beam near the room exit

DISTANCE TO PERFORMANCE GYM: Approx. 500'



Enter Warm Up A through the double doors shown in the picture above.

Exit Warm Up A through the double doors shown in the picture to the left.

****NOTE**** see pole in the picture to the left. This is your obstruction.

WARM UP B: Stage

SEPARATE ENTRANCE AND EXIT: Yes

WARM UP B MEASUREMENTS: 48' x 32'

OBSTRUCTIONS: No

DISTANCE TO PERFORMANCE AREA: Approx. 400'



FLOOR FOLDING AREA: In Aux Gym. Pass through the garage doorway to enter a small gym. Turn immediately left to enter the aux gym and fold your floor. Or pass straight through and fold your floor outside.

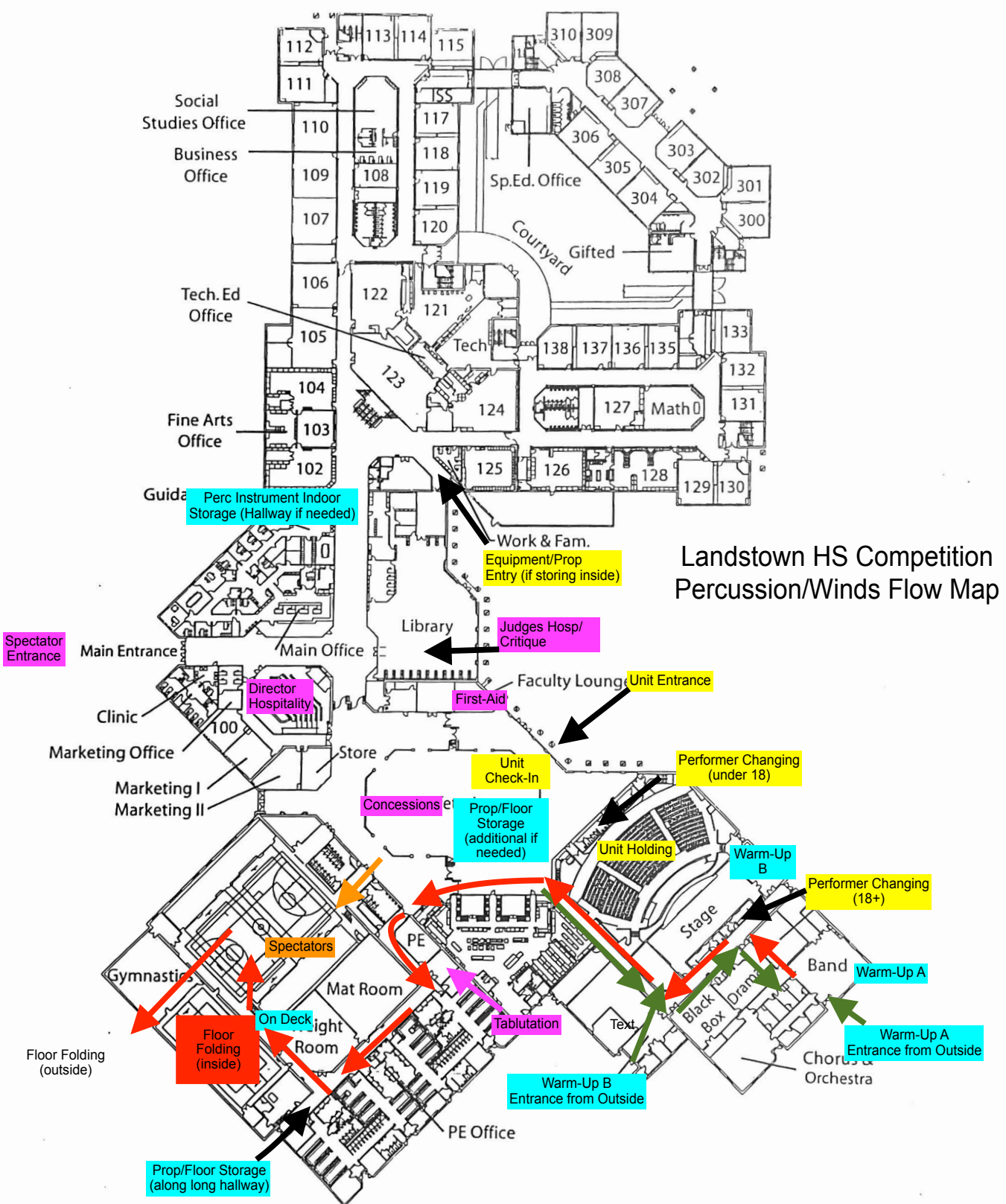


← Gym Exit

Fold your floor in the aux gym.
Enter through double door
shown in the right corner. →



Pass through this room to
load equipment outside.
You can also fold your
← floor outside.



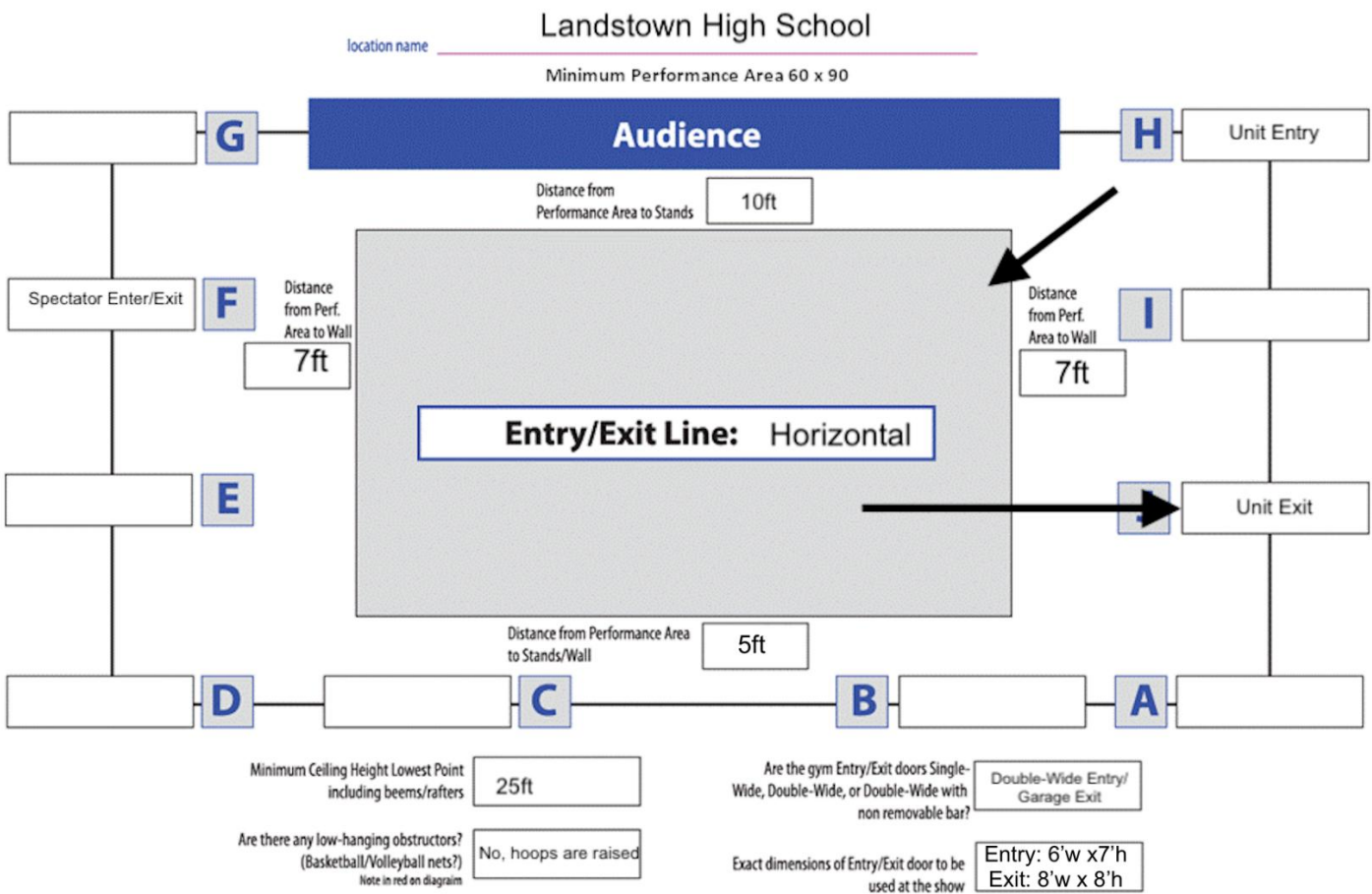


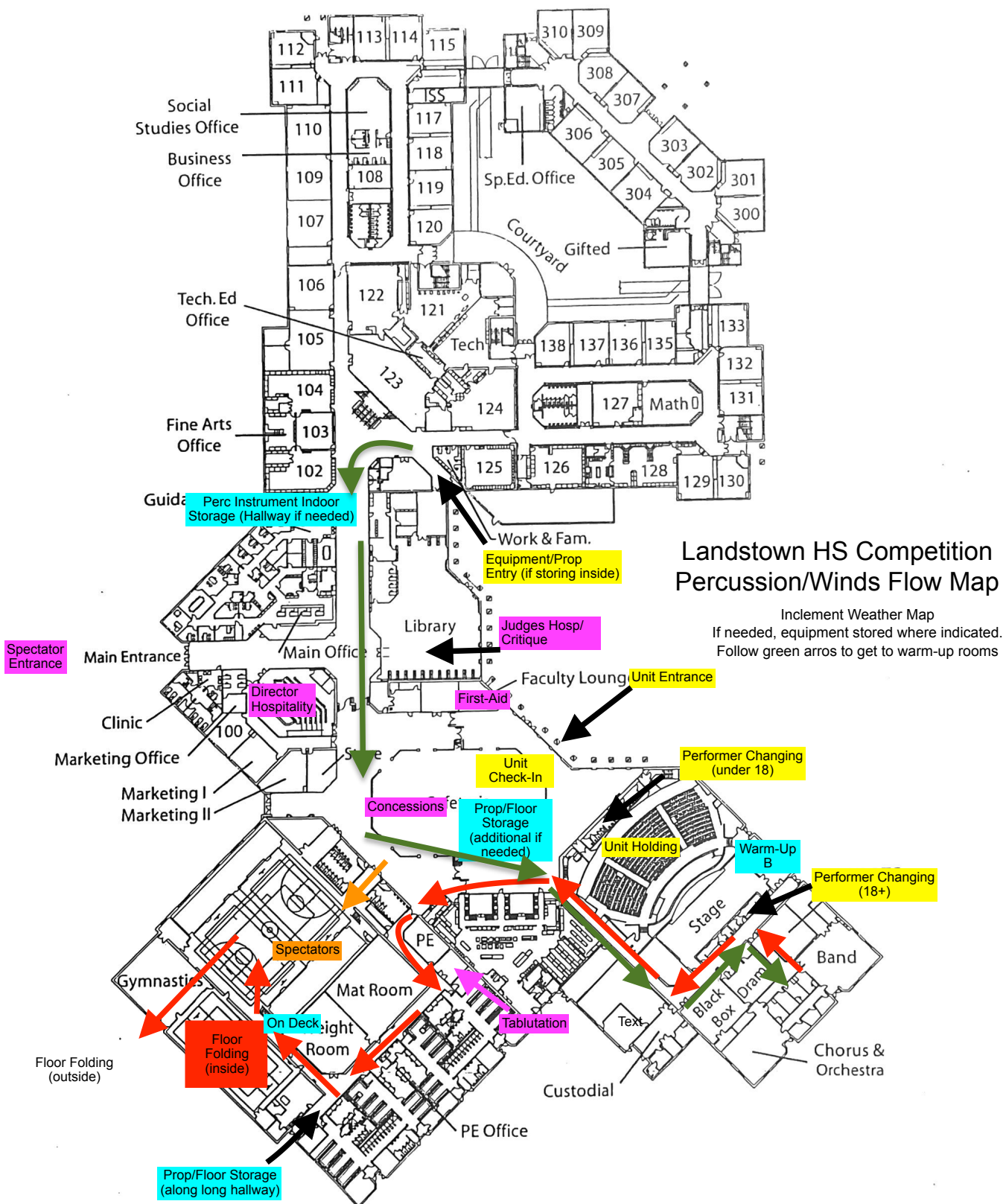
Atlantic Indoor Association

Landstown High School Competition Area

All AIA contest sites must have a minimum of 70' x 100' of gym area to accommodate a five (5) foot "safety zone" from spectator seating. If no spectators are seated on the left or right sides of the gym area, then the "safety zone" will be eliminated on the left and right sides of the competition area and can extend to the maximum of 78' x 106'.

The "competition area" at this event measures approximately 80' x 104'. All performing groups must be prepared to perform within that area. Floor tarps may not extend into the "safety zones" per rules found in the Winterguard International Adjudication Manual and Rulebook.





Landstown HS Competition Percussion/Winds Flow Map

Incliment Weather Map
 If needed, equipment stored where indicated.
 Follow green arros to get to warm-up rooms

Spectator Entrance

Perc Instrument Indoor Storage (Hallway if needed)

Equipment/Prop Entry (if storing inside)

Judges Hosp/ Critique

Unit Entrance

Unit Check-In

Performer Changing (under 18)

Prop/Floor Storage (additional if needed)

Unit Holding

Warm-Up B

Performer Changing (18+)

Concessions

Spectators

On Deck

Tabulation

Floor Folding (outside)

Floor Folding (inside)

Prop/Floor Storage (along long hallway)

Landstown HS Competition Percussion/Winds Flow Map

Incliment Weather Map
 If needed, equipment stored where indicated.
 Follow green arros to get to warm-up rooms

Spectator Entrance

Perc Instrument Indoor Storage (Hallway if needed)

Equipment/Prop Entry (if storing inside)

Judges Hosp/ Critique

Unit Entrance

Unit Check-In

Performer Changing (under 18)

Prop/Floor Storage (additional if needed)

Unit Holding

Warm-Up B

Performer Changing (18+)

Concessions

Spectators

On Deck

Tabulation

Floor Folding (outside)

Floor Folding (inside)

Prop/Floor Storage (along long hallway)

OUTSIDE MAP

