

HAMPTON COLISEUM – PERCUSSION/WINDS SHOW

VENUE: Hampton Coliseum

ADDRESS: 1000 Coliseum Drive, Hampton, VA 23666

POC/EMAIL/PHONE: Nancy Ro/nancy.ro@atlanticindoor.org/703-489-9014

Carly Philp/carly.philp@atlanticindoor.org/804-389-3274

TRAVEL OUTSIDE DURING MIGRATION: Yes

ARENA FLOOR SIZE: 120' X 240'

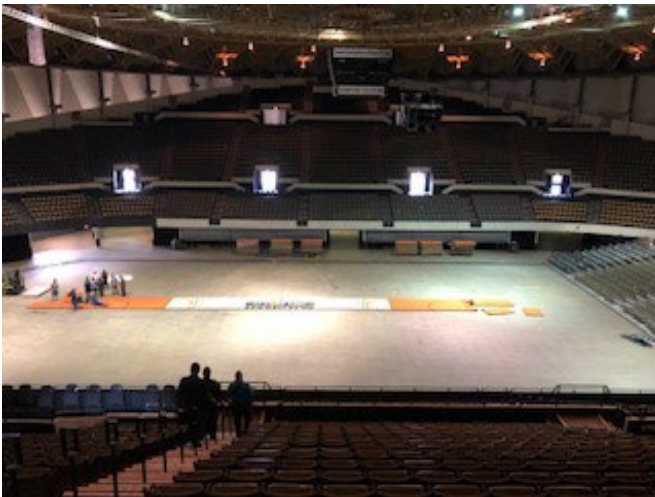
PERFORMANCE AREA: 78' x 108'

ARENA ENTRY WIDTH: approx. 10'

ARENA EXIT WIDTH: approx. 10'

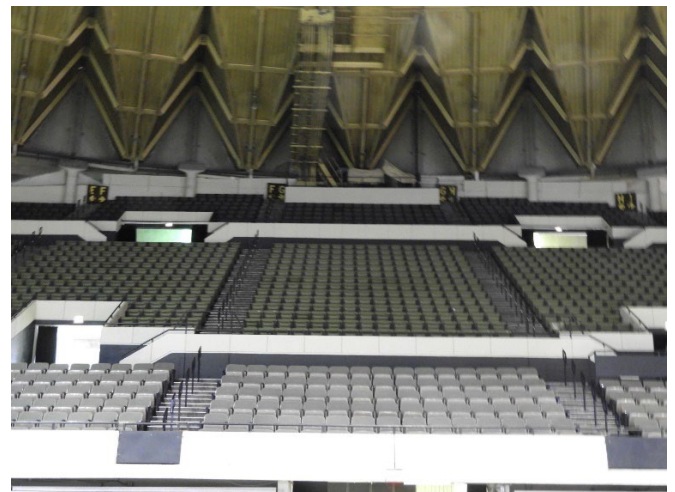
EQUIPMENT PROP STAGING AND/OR STOWING: 74' wide corridor (see pics below)

TIMING LINE: VERTICAL



View of performance area from the spectator seating.

View of spectator/judge seating from performance area.





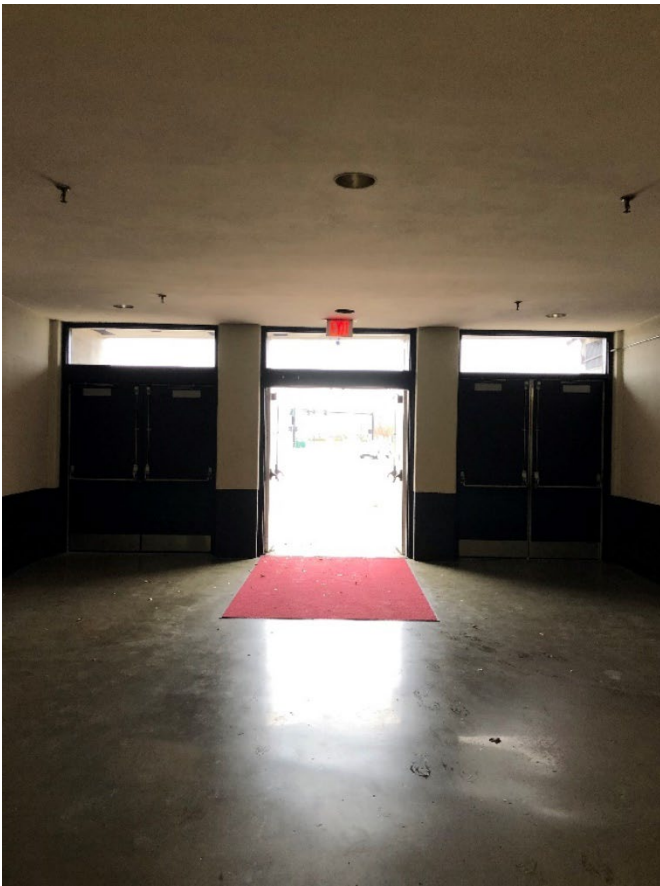
TENT A & B
SEPARATE ENTRANCE AND EXIT: Yes
TENT SIZE: 30' X 50'
CEILING HEIGHT: 13' – 18' depending on location in tent
 due to hanging lights
SOUND CARRY TO PERFORMANCE AREA: NO
DISTANCE TO PERFORMANCE AREA: Approx. 300'-400'



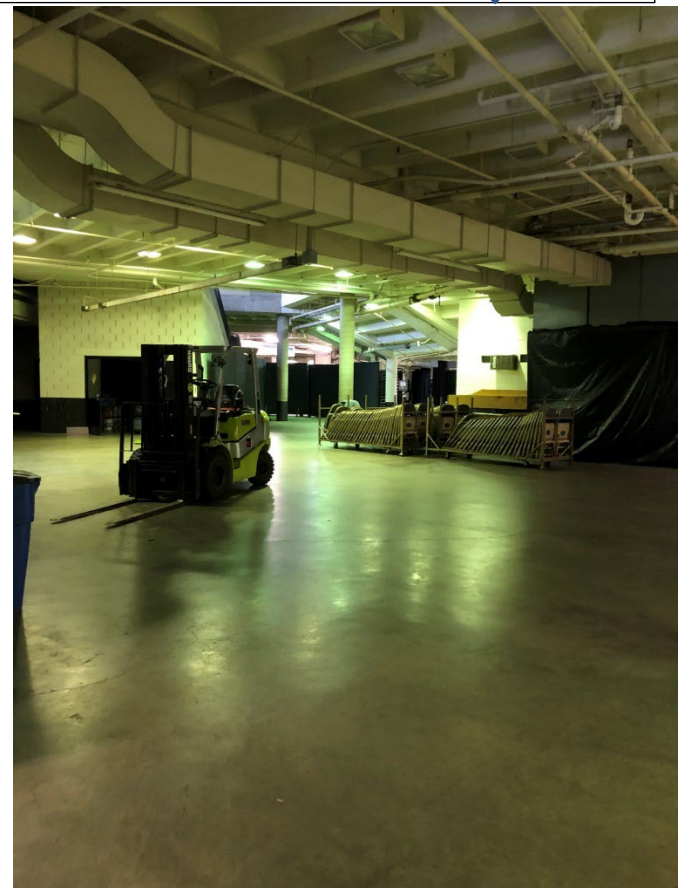
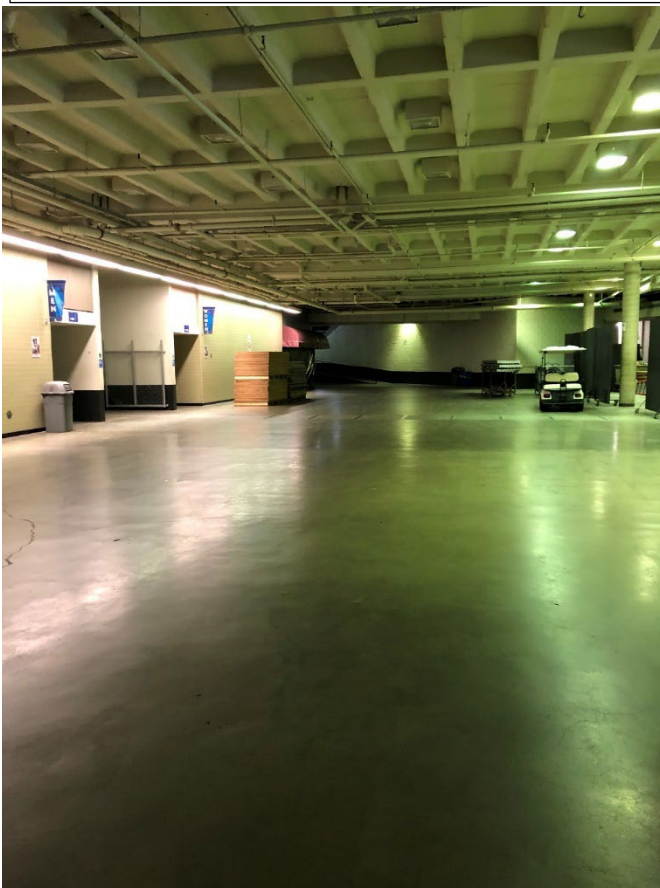
APPROXIMATE
LOCATION FOR TENT
"A"

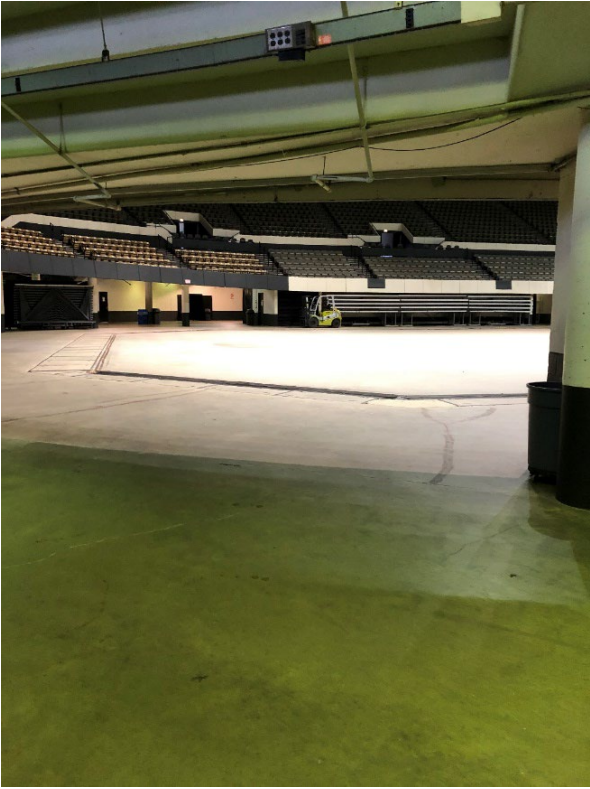
EQM UNLOADING &
PERFORMER
ENTRANCE TO
GATHER PROP/FLOOR
& TO ON DECK

APPROXIMATE
LOCATION FOR TENT
"B"



↑ The **two images above** reflect unit unloading of equipment, floors, and props. This is also the performer's entry to on deck after warm-up. The **two images below** are equip., floor, and prop storage. ↓
Pass by storage on your way to on-deck.



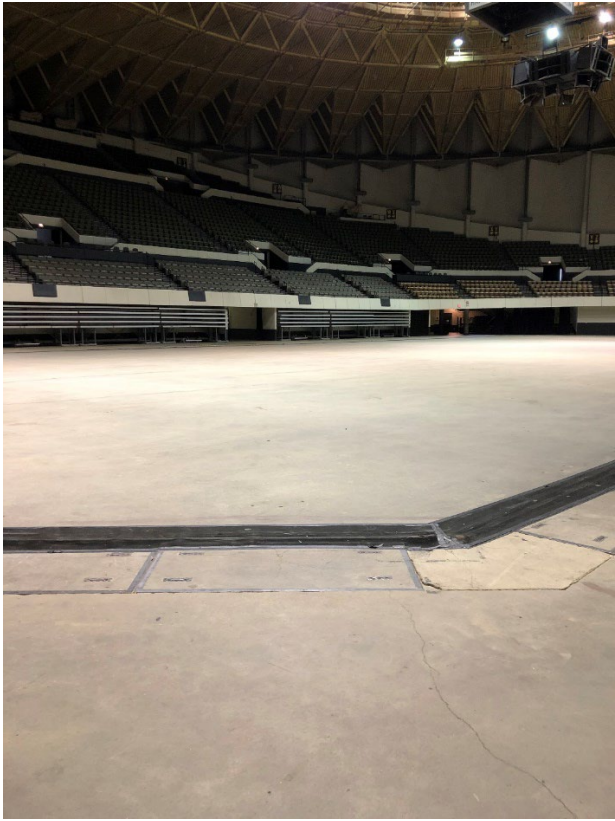


On Deck
Looking into
Performance
Area



Looking at On
Deck from
Performance
Area

Performance
Area from
On Deck





← Performance area exit

Floor Folding
just outside
performance
are exit



****NOTE****
The floor folding
area and prop
storage area are the
same size; 74' wide





****NOTE****

ONLY INDIVIDUALS WITH WRISTBANDS WILL BE ABLE TO ENTER/EXIT THE UNLOADING AND LOADING AREA.

****DIRECTORS****

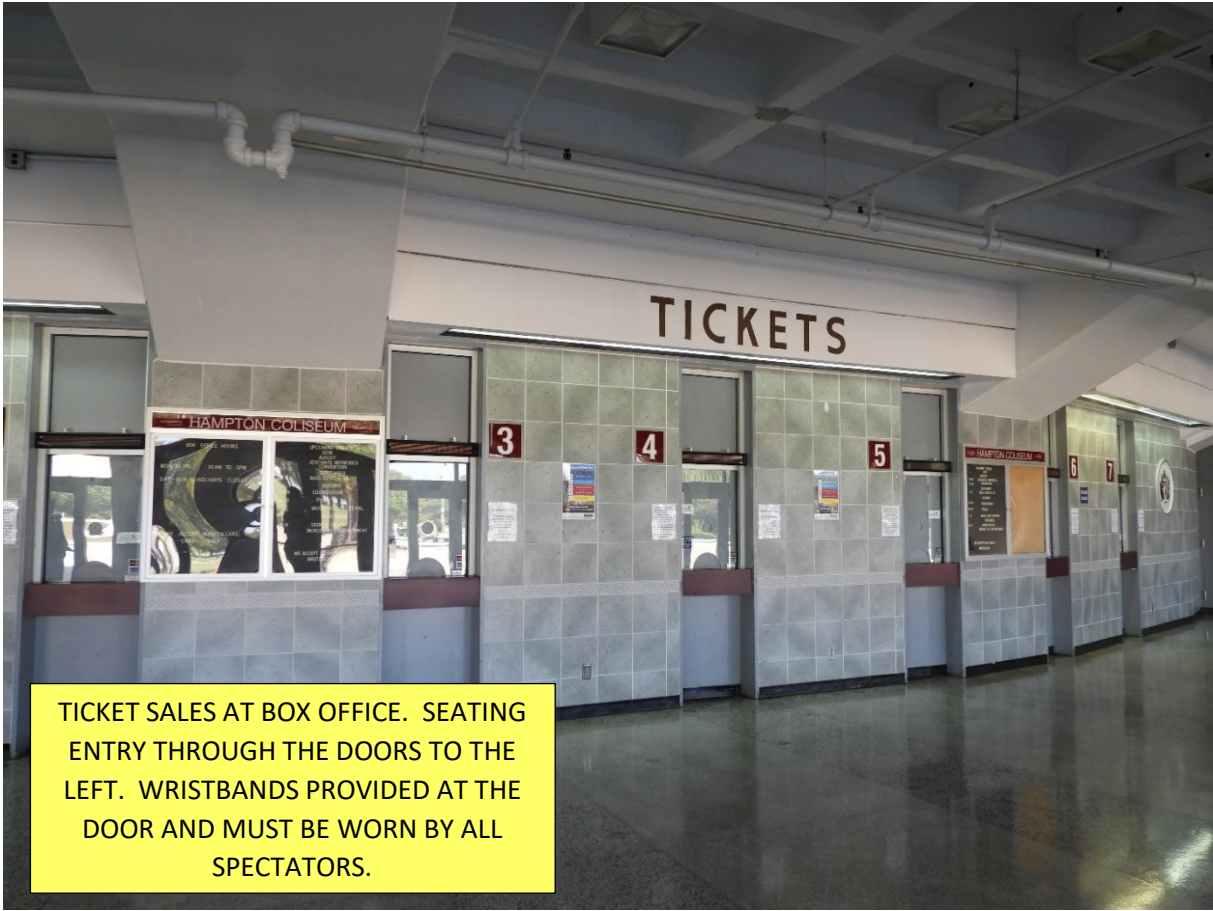
PLEASE MAKE SURE YOUR PERFORMERS AND VOLUNTEERS HAVE THEIR WRISTBANDS ON WHEN IN THIS AREA.

← EXIT TO EQM LOADING;
INSIDE VIEW TO THE LEFT
AND OUTSIDE VIEW
BELOW.

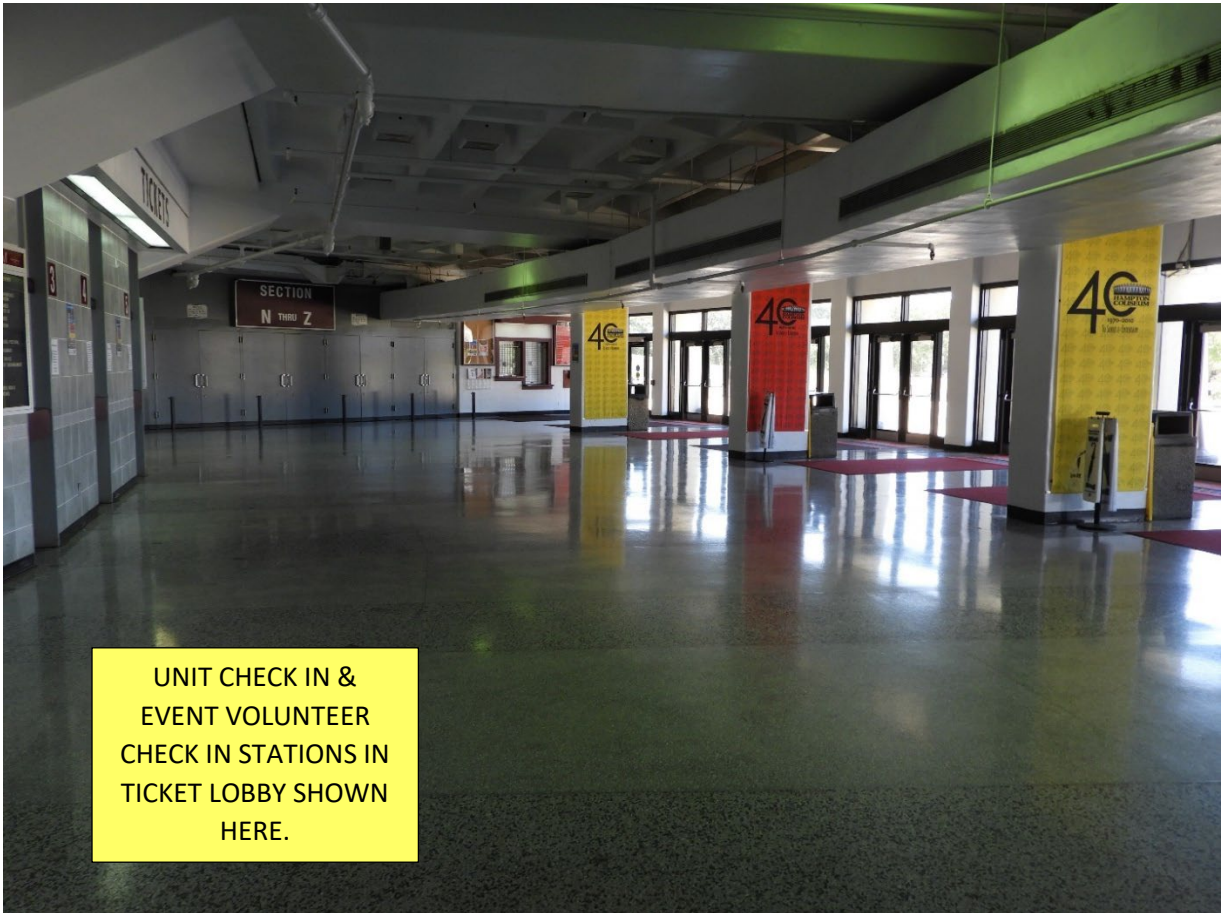


EQM LOADING INSIDE GATED AREA. SEVERAL UNITS CAN LOAD AT ONE TIME BUT MUST MOVE QUICKLY.

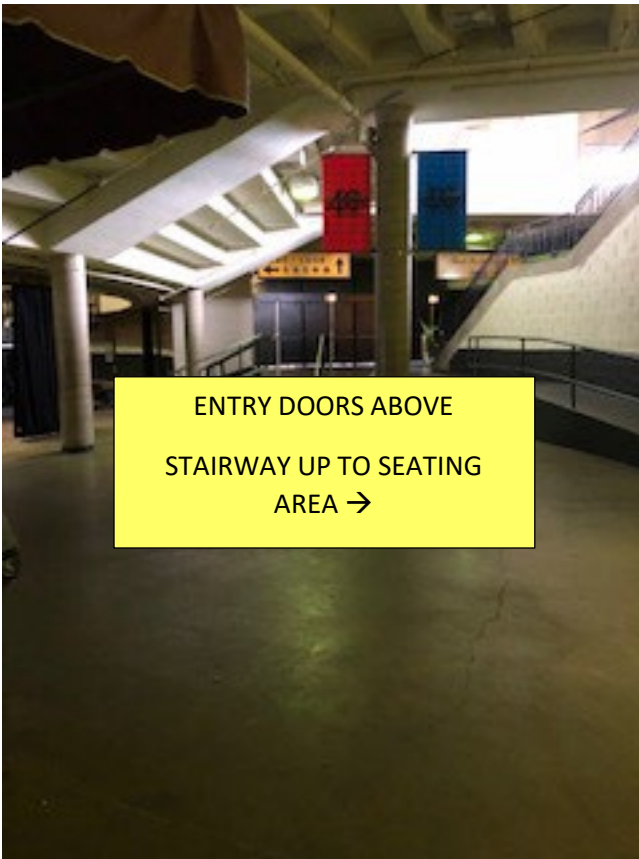




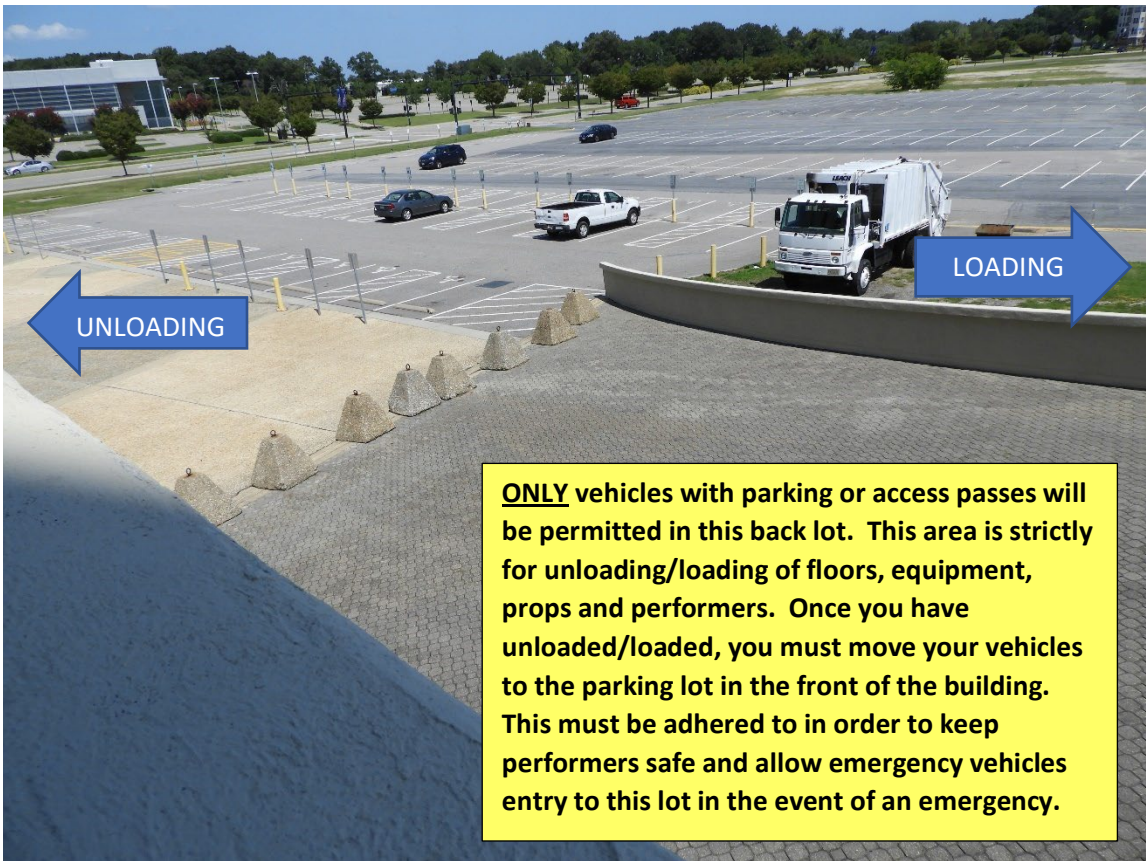
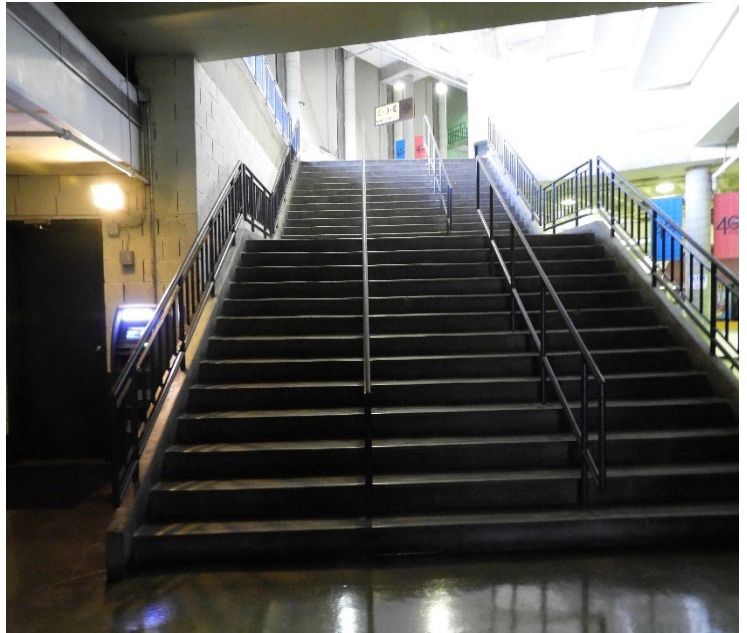
TICKET SALES AT BOX OFFICE. SEATING ENTRY THROUGH THE DOORS TO THE LEFT. WRISTBANDS PROVIDED AT THE DOOR AND MUST BE WORN BY ALL SPECTATORS.



UNIT CHECK IN & EVENT VOLUNTEER CHECK IN STATIONS IN TICKET LOBBY SHOWN HERE.



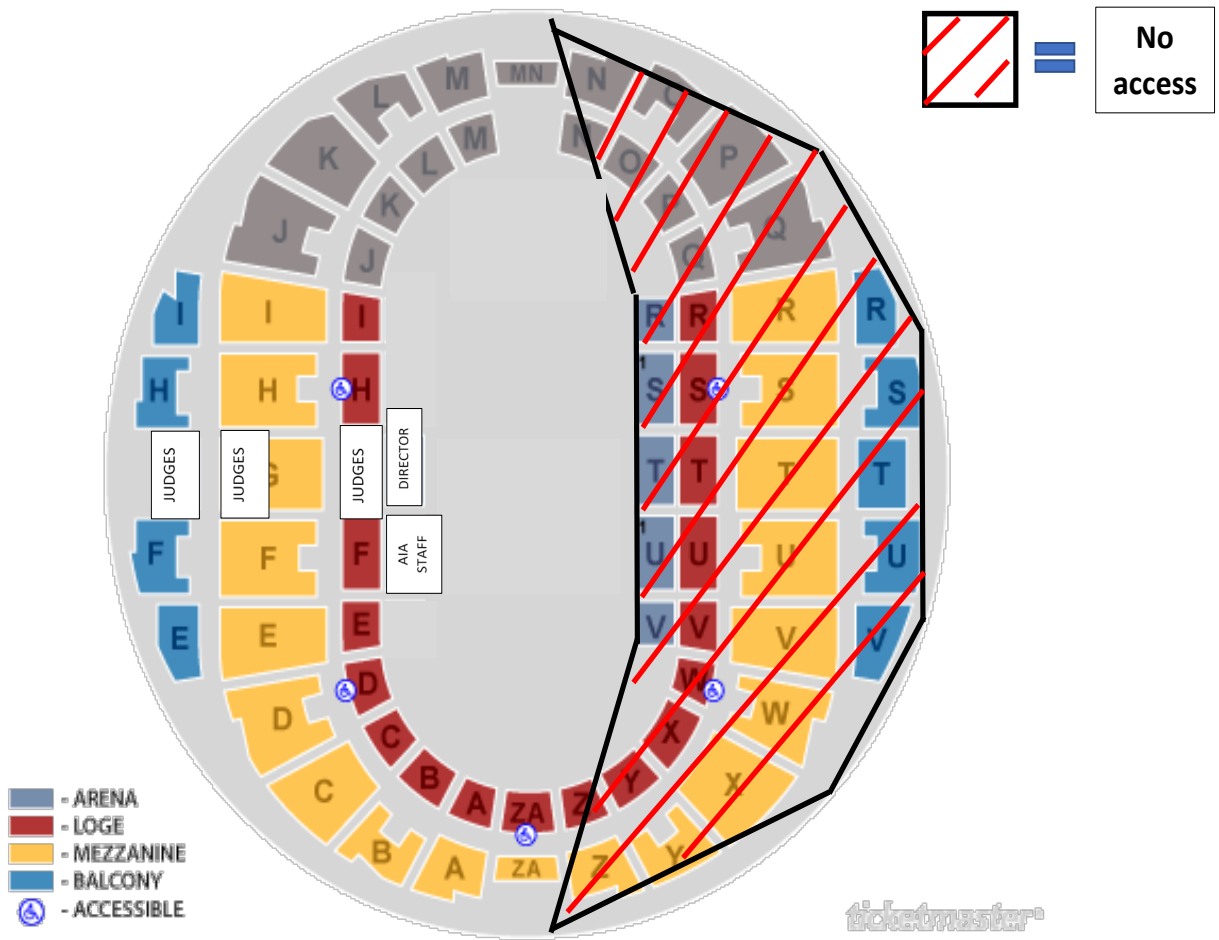
ENTRY DOORS ABOVE
STAIRWAY UP TO SEATING
AREA →



ONLY vehicles with parking or access passes will be permitted in this back lot. This area is strictly for unloading/loading of floors, equipment, props and performers. Once you have unloaded/loaded, you must move your vehicles to the parking lot in the front of the building. This must be adhered to in order to keep performers safe and allow emergency vehicles entry to this lot in the event of an emergency.

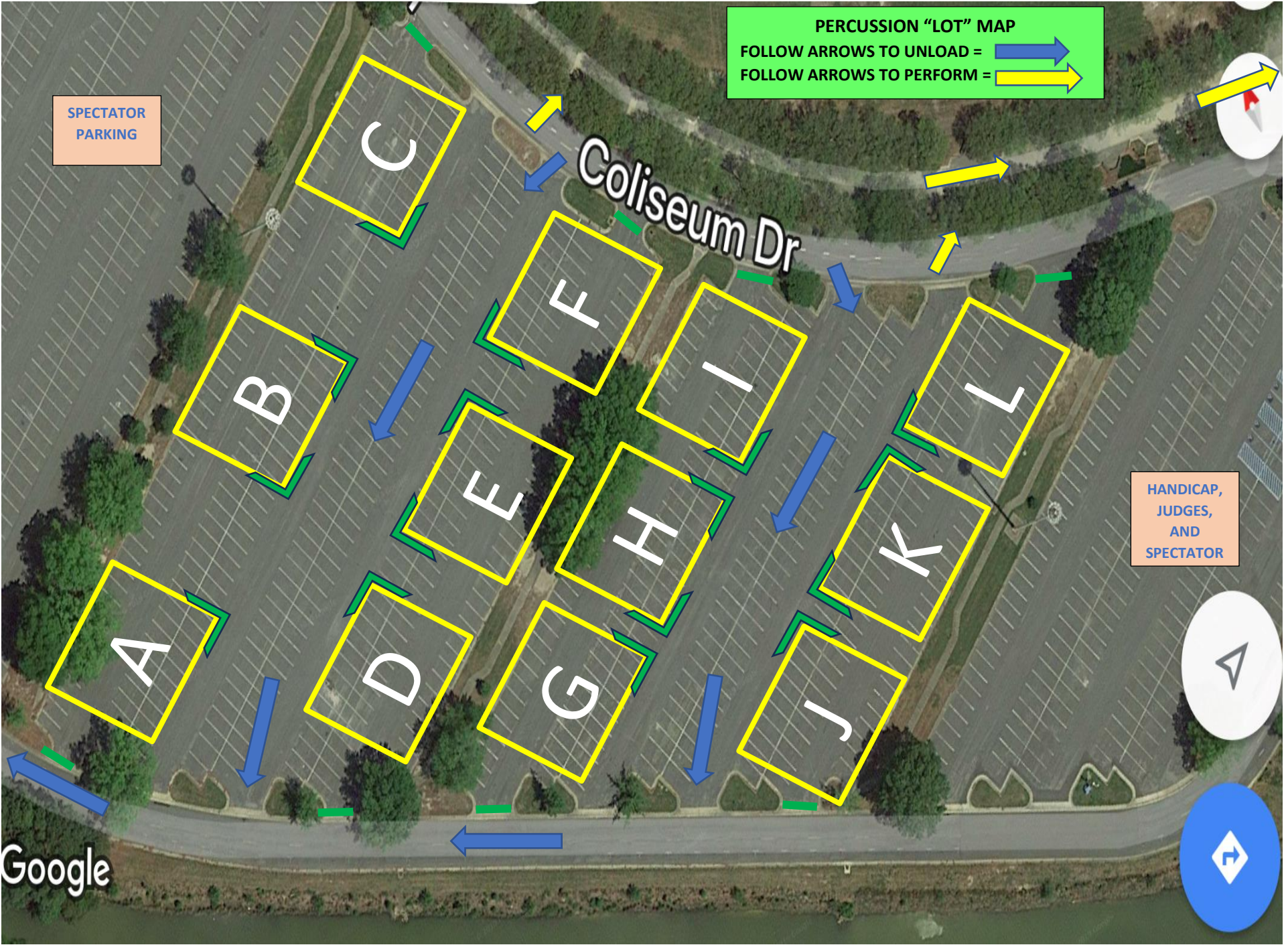
HAMPTON COLISEUM SEATING CHART



NO SEATING ON BACKSIDE



PERCUSSION/WINDS EXTERIOR MAP





PERCUSSION "LOT" MAP
FOLLOW ARROWS TO UNLOAD = 
FOLLOW ARROWS TO PERFORM = 

SPECTATOR PARKING

Coliseum Dr

HANDICAP, JUDGES, AND SPECTATOR

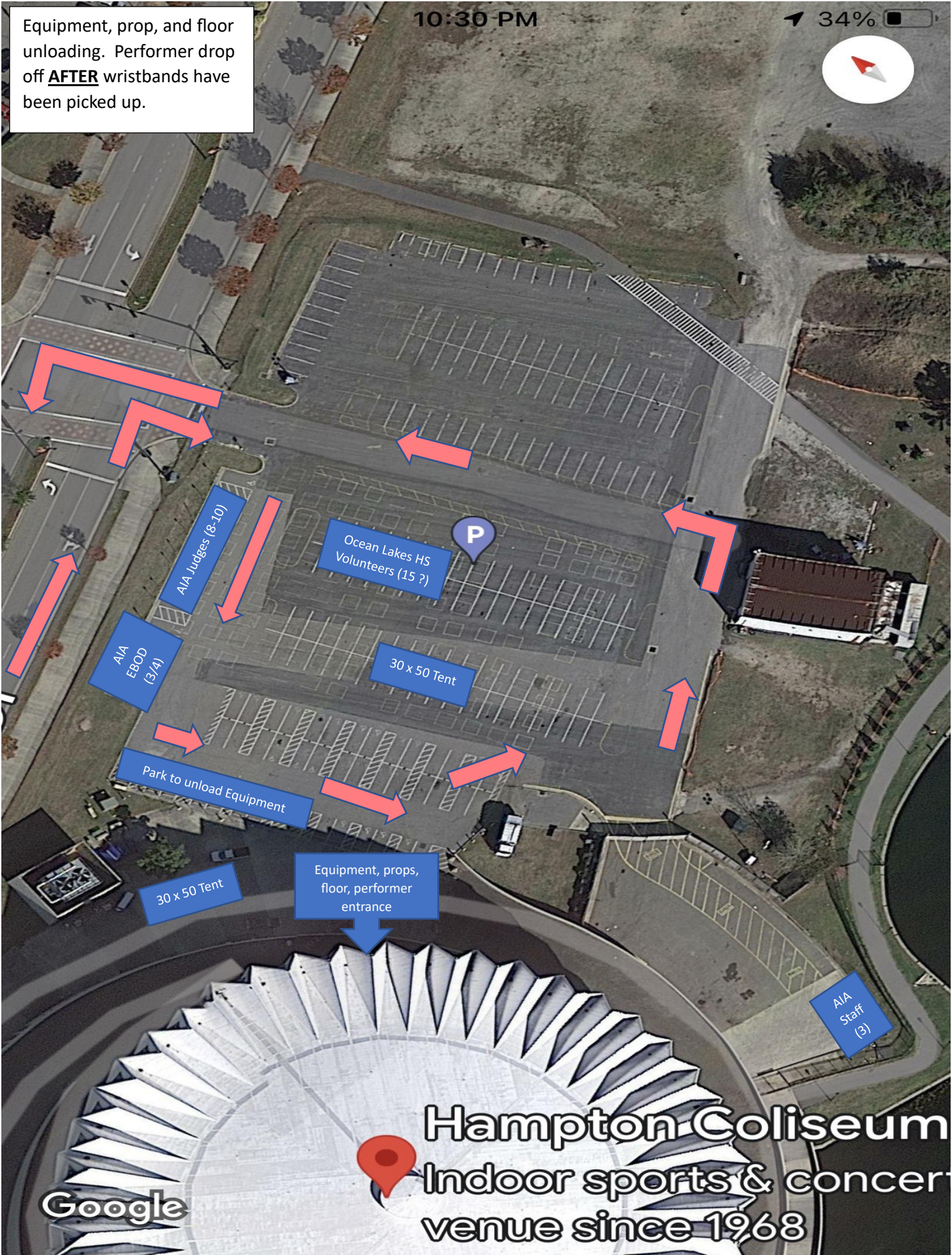
Google



Equipment, prop, and floor unloading. Performer drop off **AFTER** wristbands have been picked up.

10:30 PM

34%



AIA Judges (8-10)

Ocean Lakes HS Volunteers (15 ?)

AIA EBOD (3/4)

30 x 50 Tent

Park to unload Equipment

30 x 50 Tent

Equipment, props, floor, performer entrance

AIA Staff (3)

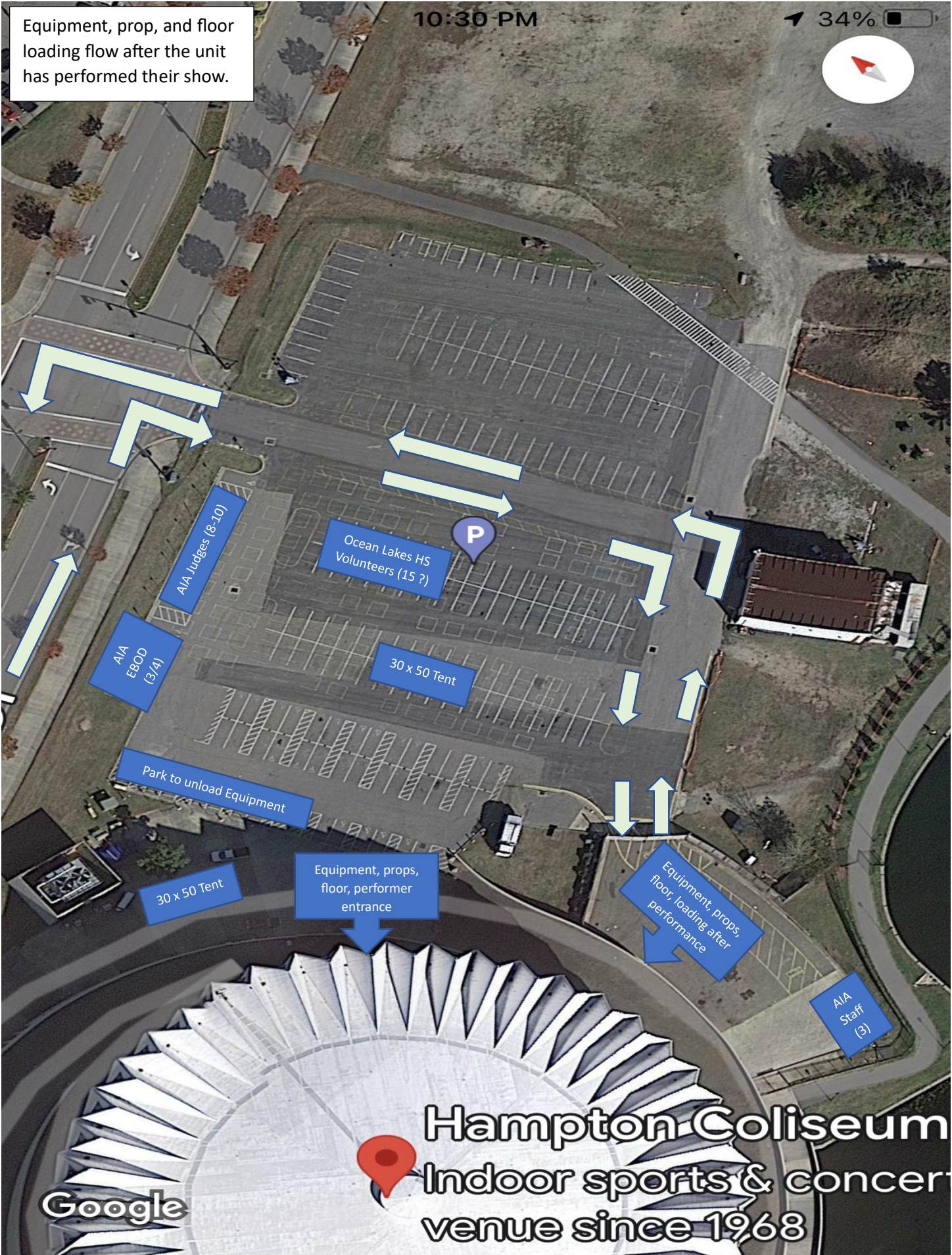
Hampton Coliseum
Indoor sports & concert venue since 1968

Google

Equipment, prop, and floor loading flow after the unit has performed their show.

10:30 PM

34%



Hampton Coliseum
Indoor sports & concert venue since 1968

Google



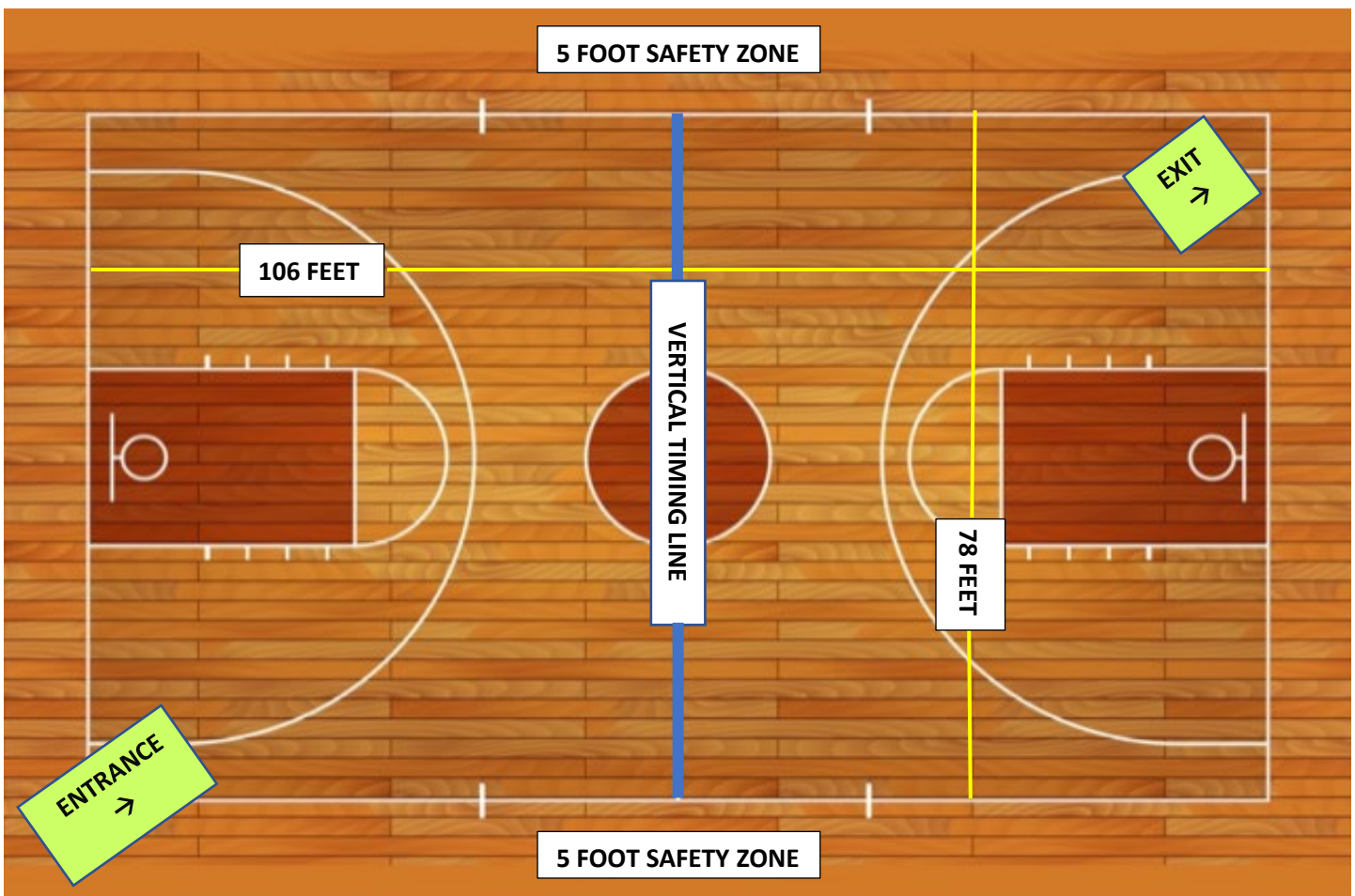
Atlantic Indoor Association

Hampton Coliseum Competition Area

All AIA contest sites must have a minimum of 70' x 100' of gym area to accommodate a five (5) foot "safety zone" from spectator seating. If no spectators are seated on the left or right sides of the gym area, then the "safety zone" will be eliminated on the left and right sides of the competition area and can extend to the maximum of 78' x 106'.

The "competition area" at this event measures approximately 78' x 106'. All performing groups must be prepared to perform within that area. Floor tarps may not extend into the "safety zones" per rules found in the Winterguard International Adjudication Manual and Rulebook.

BACKSIDE SEATING



SPECTATOR SEATING