

**Powhatan High School
Percussion Site Information**

LOCATION: Powhatan High School

ADDRESS: 1800 Judes Ferry Road, Powhatan, VA 23139 **POC/**

EMAIL/PHONE: Laura Huggins

TRAVEL OUTSIDE DURING MIGRATION: No

GYM PERFORMANCE AREA: approx. 70' X 90'

GYM ENTRY DOOR WIDTH: approx. 6'5"

GYM EXIT DOOR WIDTH: approx. 6'5"

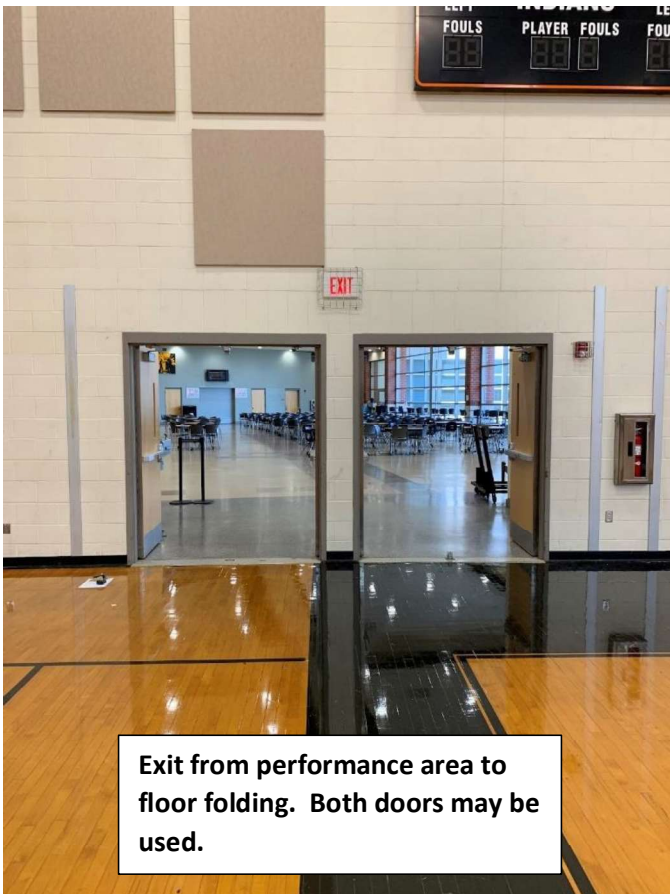
EQUIPMENT PROP STAGING AND/OR STOWING: Units will only be permitted to bring their floors in to store along the main hallway. Props **CANNOT** be brought inside until just before you enter your warmup rotation.



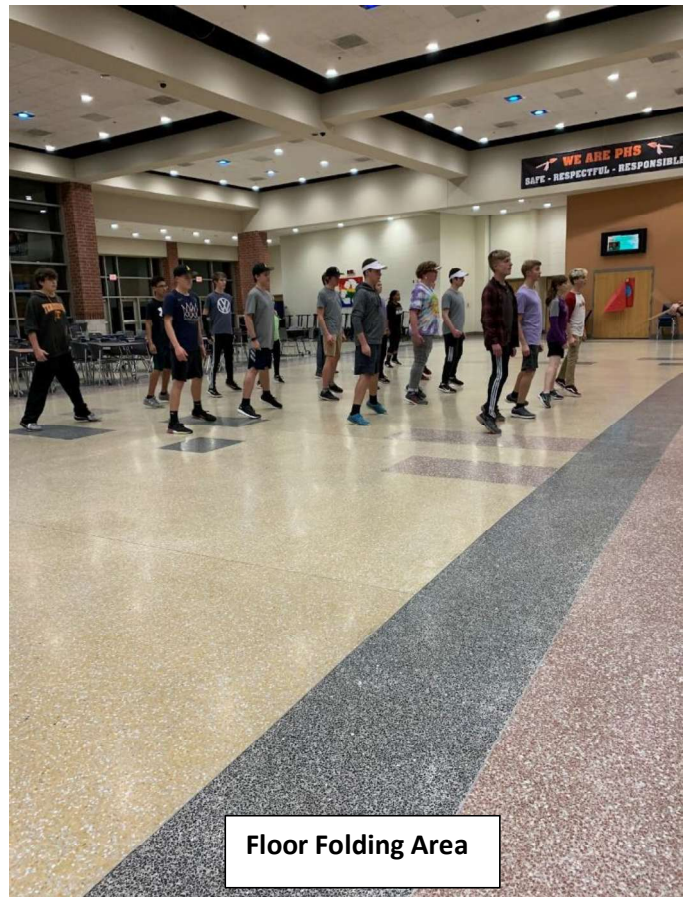
APPROXIMATE CEILING HEIGHT: 30'

TIMING LINE: Vertical

Performance area entrance from Aux Gym. Doors are double wide with center bar removed.



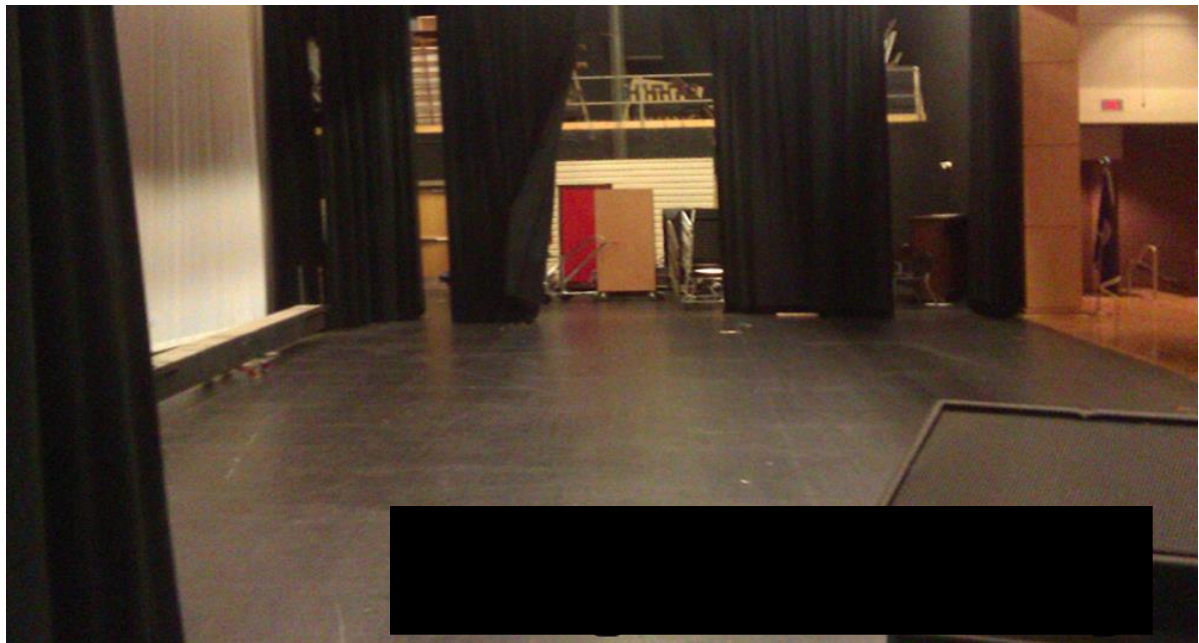
Exit from performance area to floor folding. Both doors may be used.

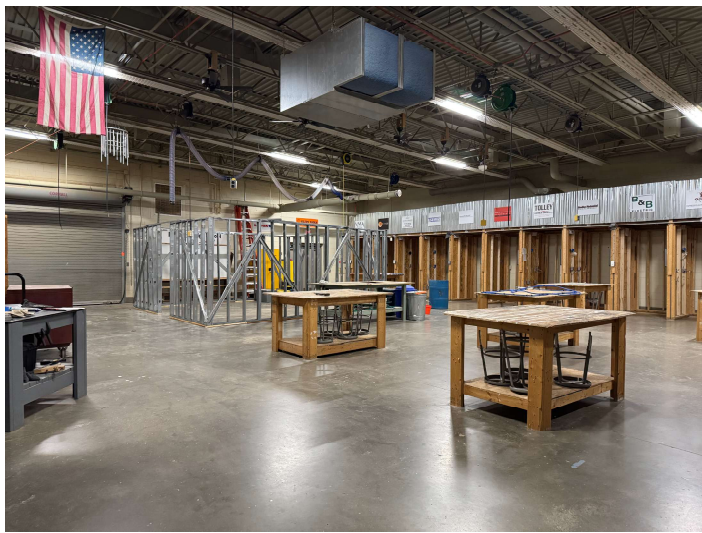


Floor Folding Area



WARM UP "A": Stage
SEPARATE ENTRANCE AND EXIT: No
EQUIPMENT WARM UP MEASUREMENTS:
42' X 50'
CEILING HEIGHT: Approx 12'
OBSTRUCTIONS: Stage curtains and potential
theatrical items
DISTANCE TO PERFORMANCE AREA: Approx
1,000'





WARM UP B: Room V101

SEPARATE ENTRANCE AND EXIT: Yes

MEASUREMENTS: 40' X 50' **CEILING HEIGHT:** Approx 12'

OBSTRUCTIONS: Yes - electrical outlets hanging from the ceiling. Tables will be moved and a tarp put down on the floor.

DISTANCE TO PERFORMANCE: Approx 3,000'

Door below is the exit



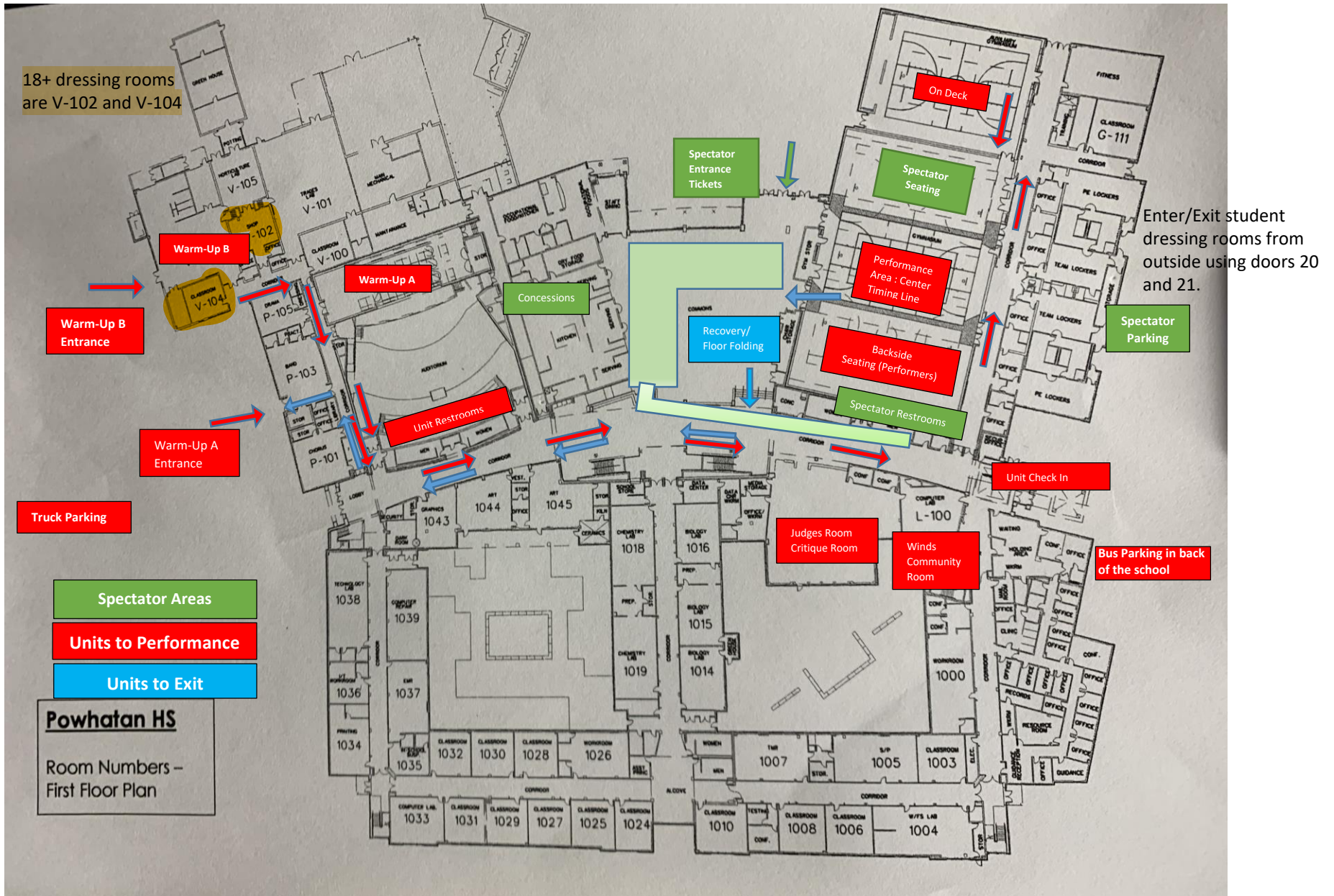
Main corridor leading to equipment warmup from body warmup.



Enter Aux Gym to be On Deck to perform



Percussion and Winds Building Map

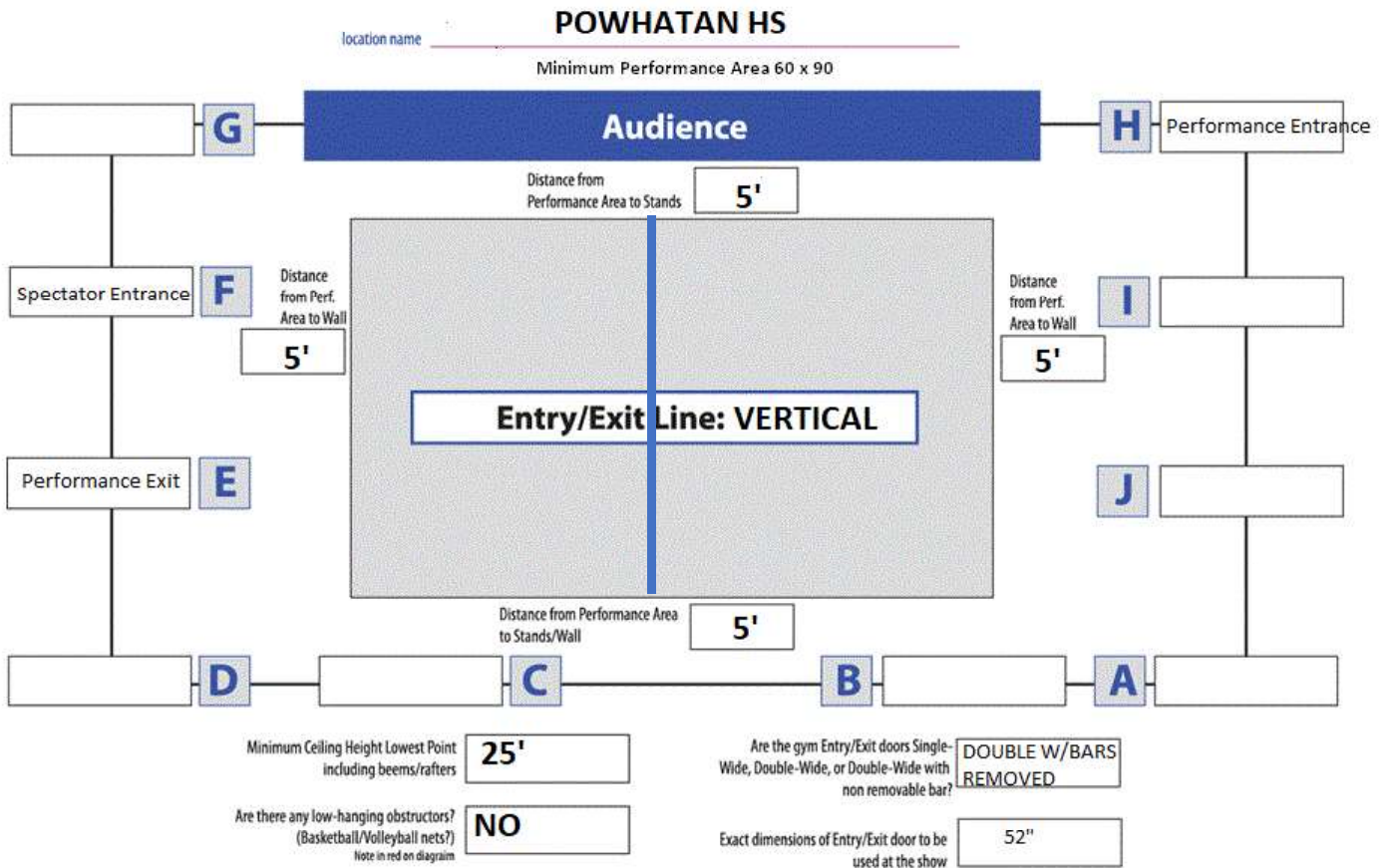


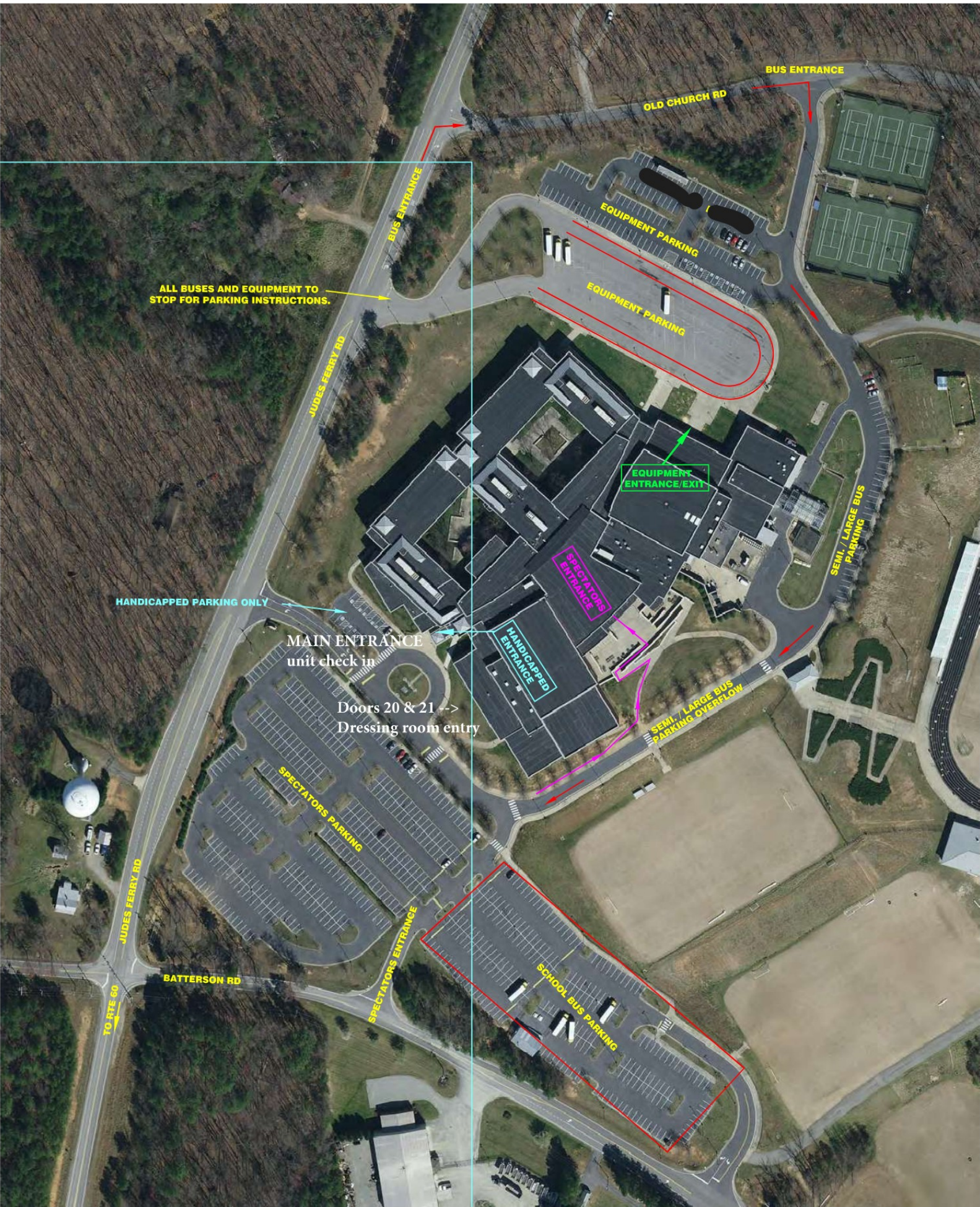


Atlantic Indoor Association
Powhatan High School
Percussion Competition Area

All AIA contest sites must have a minimum of 70' x 100' of gym area to accommodate a five (5) foot "safety zone" from spectator seating. If no spectators are seated on the left or right sides of the gym area, then the "safety zone" will be eliminated on the left and right sides of the competition area and can extend to the maximum of 78' x 106'.

The "competition area" at this event will measure approximately 70' x 90'. All performing groups must be prepared to perform within that area. Floor tarps may not extend into the "safety zones" per rules found in the Winterguard International Adjudication Manual and Rulebook.





ALL BUSES AND EQUIPMENT TO STOP FOR PARKING INSTRUCTIONS.

HANDICAPPED PARKING ONLY

MAIN ENTRANCE
unit check in
Doors 20 & 21 -->
Dressing room entry

BUS ENTRANCE

OLD CHURCH RD

BUS ENTRANCE

EQUIPMENT PARKING

EQUIPMENT PARKING

JUDES FERRY RD

EQUIPMENT ENTRANCE/EXIT

SPECTATORS ENTRANCE

HANDICAPPED ENTRANCE

SEMI. / LARGE BUS PARKING

SEMI. / LARGE BUS PARKING OVERFLOW

JUDES FERRY RD

BATTERSON RD

TO RTE 60

SPECTATORS ENTRANCE

SCHOOL BUS PARKING