



GAINESVILLE HIGH SCHOOL COLORGUARD

LOCATION: Gainesville High School

ADDRESS: 13150 University Boulevard, Gainesville, VA 20155

POC/EMAIL/PHONE: Vince Bryk / brykve@pwcs.edu /

TRAVEL OUTSIDE DURING MIGRATION: No

GYM PERFORMANCE AREA: approx. 104' X 70'

GYM ENTRY DOOR WIDTH: approx. 71" x 84"

GYM EXIT DOOR WIDTH: approx. 71" x 84"

EQUIPMENT PROP STAGING AND/OR STOWING: Please see indoor migration map for the storage locations. Make sure to store any props against the walls in the far hallway. In the hallway near the On-Deck area, you must store floors/props on one side of the hall so others can move through.

APPROXIMATE CEILING HEIGHT: 30'

TIMING LINE: Vertical





Gym Entrance from
On-Deck from inside
the gym

Door Measurements –
approx. 71” x 84”

Gym Exit to Floor Folding.
Door measurements -
approx. 71” x 84”



FLOOR FOLDING



Body Warm Up – Band Room



Separate Entrance / Exit: Yes

Obstructions: No

Size: 51' x 40'

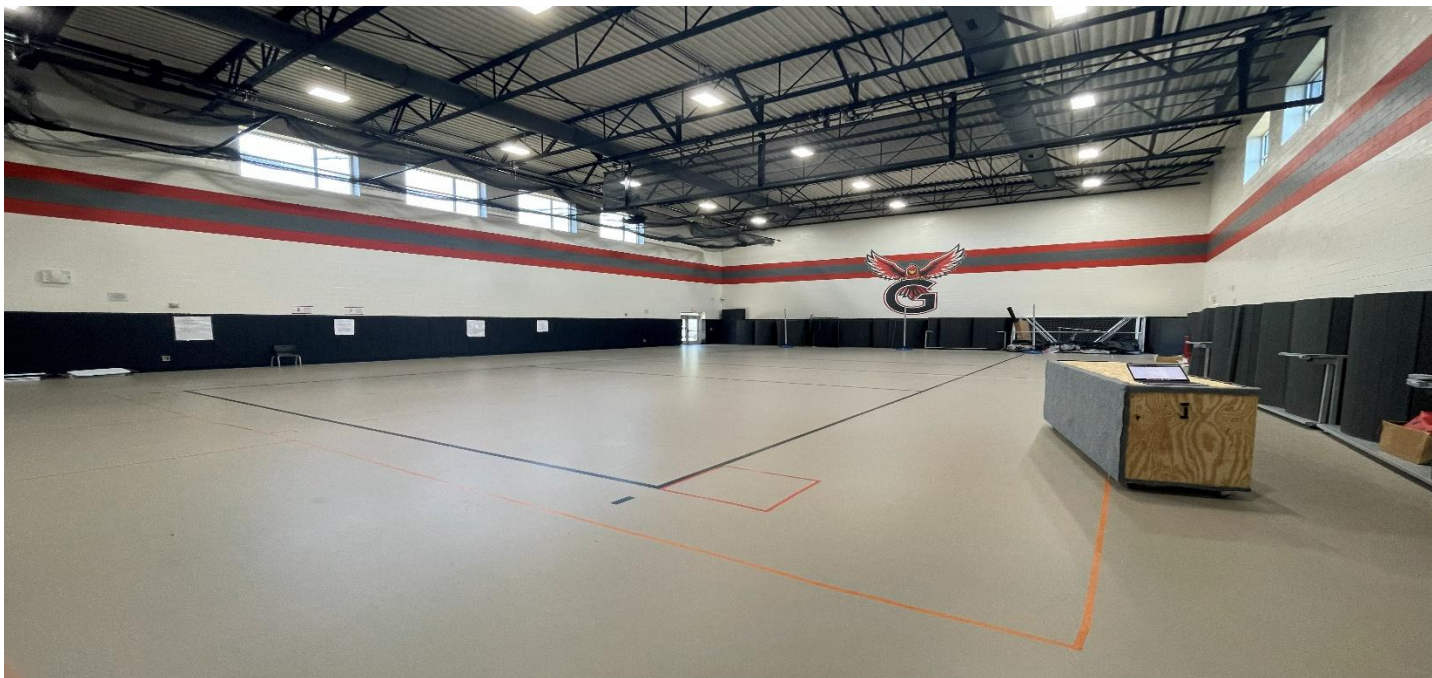
Distance to Eqm Warmup: 3-5 min walk

Music can be played, equipment cannot be spun.



Body Warmup
Entrance

Equipment Warmup – Aux Gym



Separate Entrance / Exit: Yes

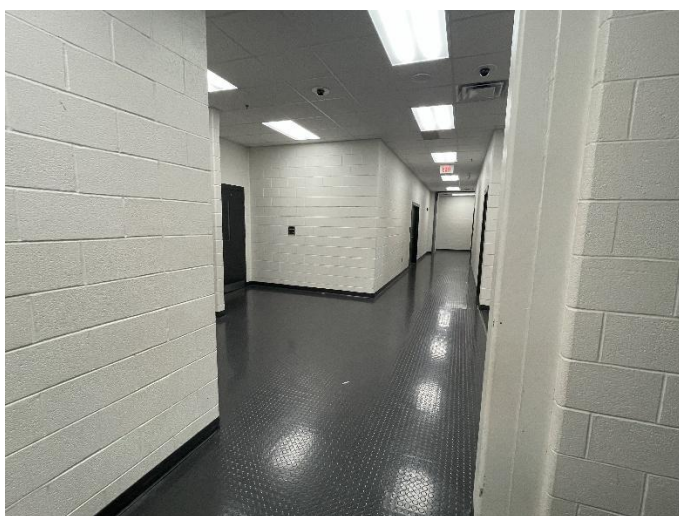
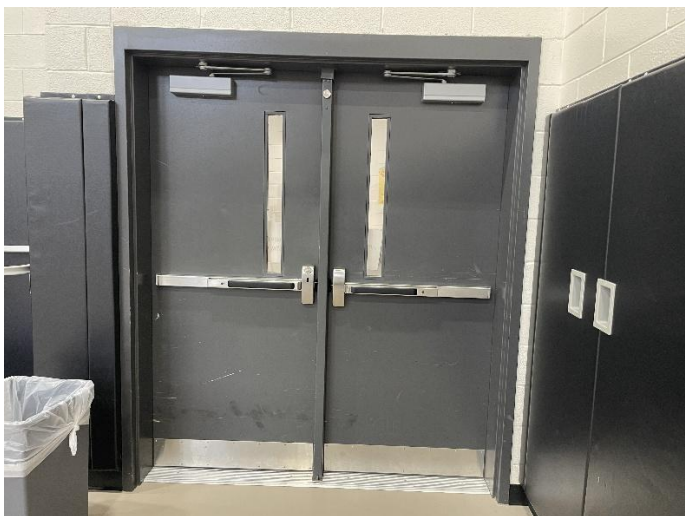
Obstructions: Baseball nets and mats

Size: 90' x 56'

Ceiling Height: approx. 30'

Distance to On-Deck: 20'

Additional Info: Music can be played. On-Deck and staging is right outside the door shown below. This area will become congested. Please line up along the walls to allow room for two units their floors/props to fit in this space.





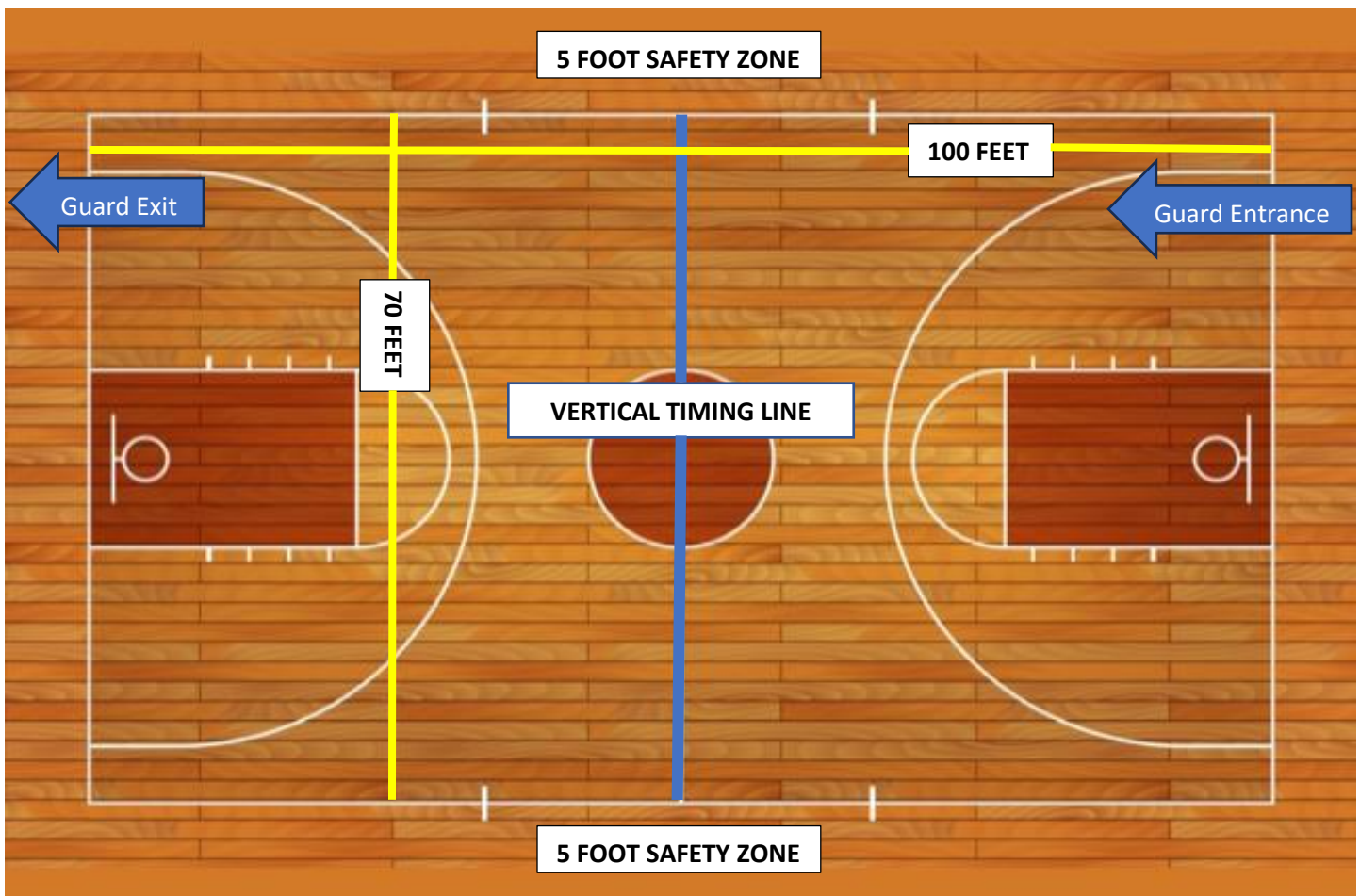
Atlantic Indoor Association

**Gainesville High School
Competition Area**

All AIA contest sites must have a minimum of 70' x 100' of gym area to accommodate a five (5) foot "safety zone" from spectator seating. If no spectators are seated on the left or right sides of the gym area, then the "safety zone" will be eliminated on the left and right sides of the competition area and can extend to the maximum length of 106'.

The "competition area" at this event measures approximately 70 x 100. All performing groups must be prepared to perform within that area. Floor tarps may not extend into the "safety zones" per rules found in the Winterguard International Adjudication Manual and Rulebook.

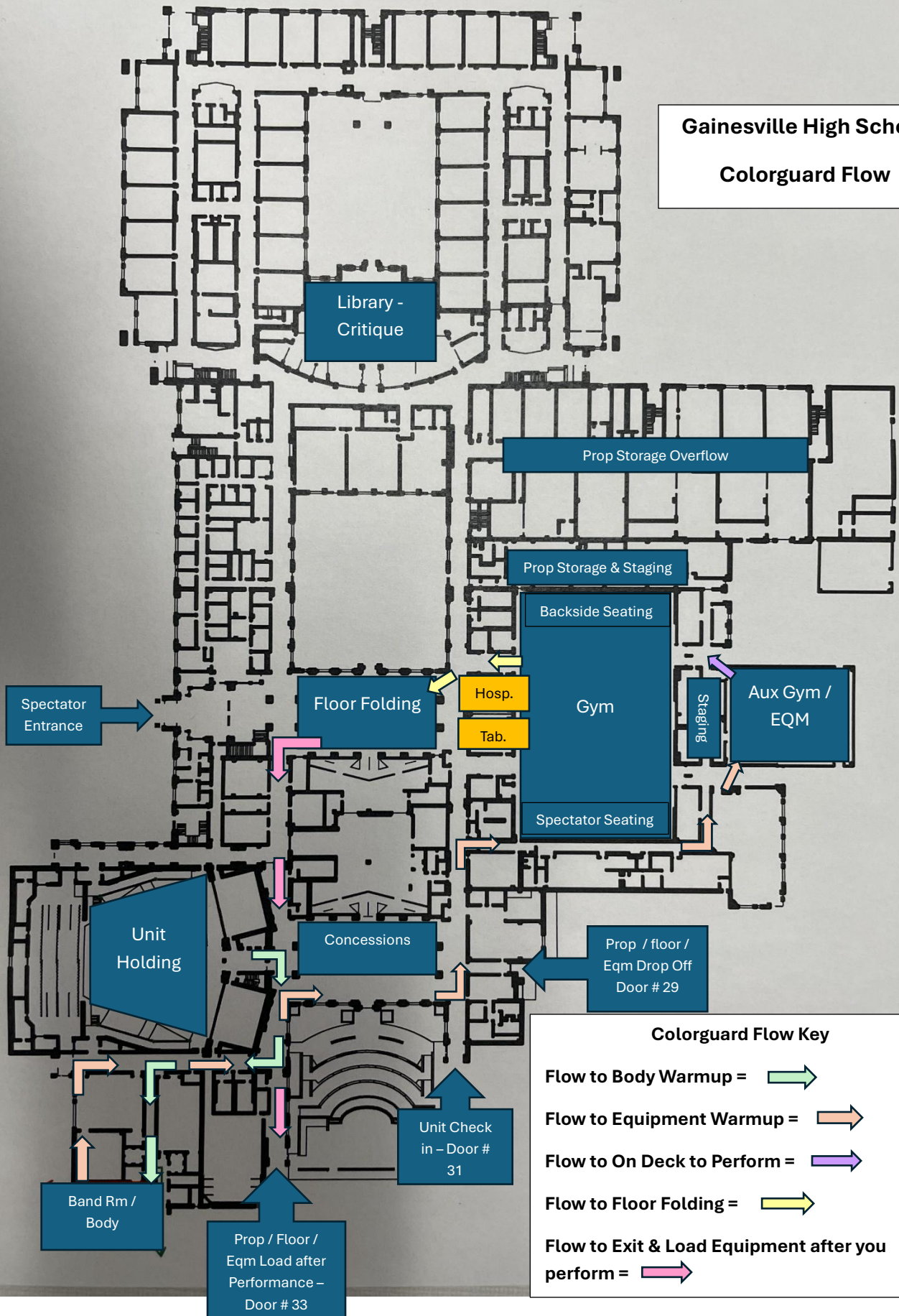
BACKSIDE SEATING



SPECTATOR SEATING

Gainesville High School

Colorguard Flow



Gainesville High School

Colorguard Outside Flow

Bus Parking

University Blvd

Spectator

Parking

Spectator Parking

Gainesville High School

Spectator Entrance –
Door #1

Props /
Floor / Eqm
drop off –
Door # 29

Unit Check in –
Door # 31

Props / Floor /
Eqm Load
after Perform –
Door # 33

Gainesville High
School Football Field

Van / Truck Parking

Overflow Parking

